



## Apartment One-bedroom (2+kk)

Rented

60 m<sup>2</sup>, Prague 5, Malá Strana, Plaská





## Apartment One-bedroom (2+kk)

Rented

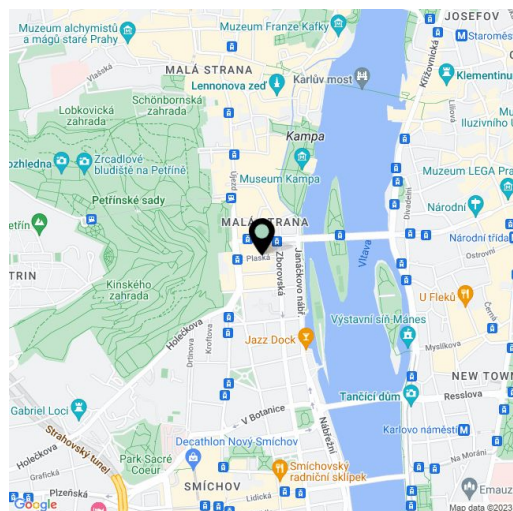
60 m<sup>2</sup>, Prague 5, Malá Strana, Plaská

Total area	60 m <sup>2</sup>
Parking	-
Cellar	-
PENB	G
Reference number	40194
Available from	Immediately

This stylish, fully furnished 1-bedroom apartment is situated on the 1st floor of a historical building with an elevator on the border of Malá Strana and Smíchov on a quiet street near the greenery of Petřín hill and popular Kampa island with the romantic Čertovka Stream, called Prague Venice. Only 1 tram stop from the National Theater, a 2-minute walk to the Újezd tram stop, 5 minutes from the Nový Smíchov shopping and entertainment center and the Anděl metro station, and 8 minutes by tram to the Malostranská metro station (line A).

The apartment offers a living room, a fully equipped kitchen, 1 bedroom, a full bathroom with a shower, tub, and toilet, and an entrance hall with built-in storage space.

**Wooden parquet floors** and tiles, **induction hob**, dishwasher, microwave oven, spacious wardrobe in the bedroom, curtains and drapes, **cellar**, high-speed Internet by UPC, gas boiler. Building charges and water CZK 900/person. Gas and electricity will be transferred to the tenant. Available from December 1st, 2022.



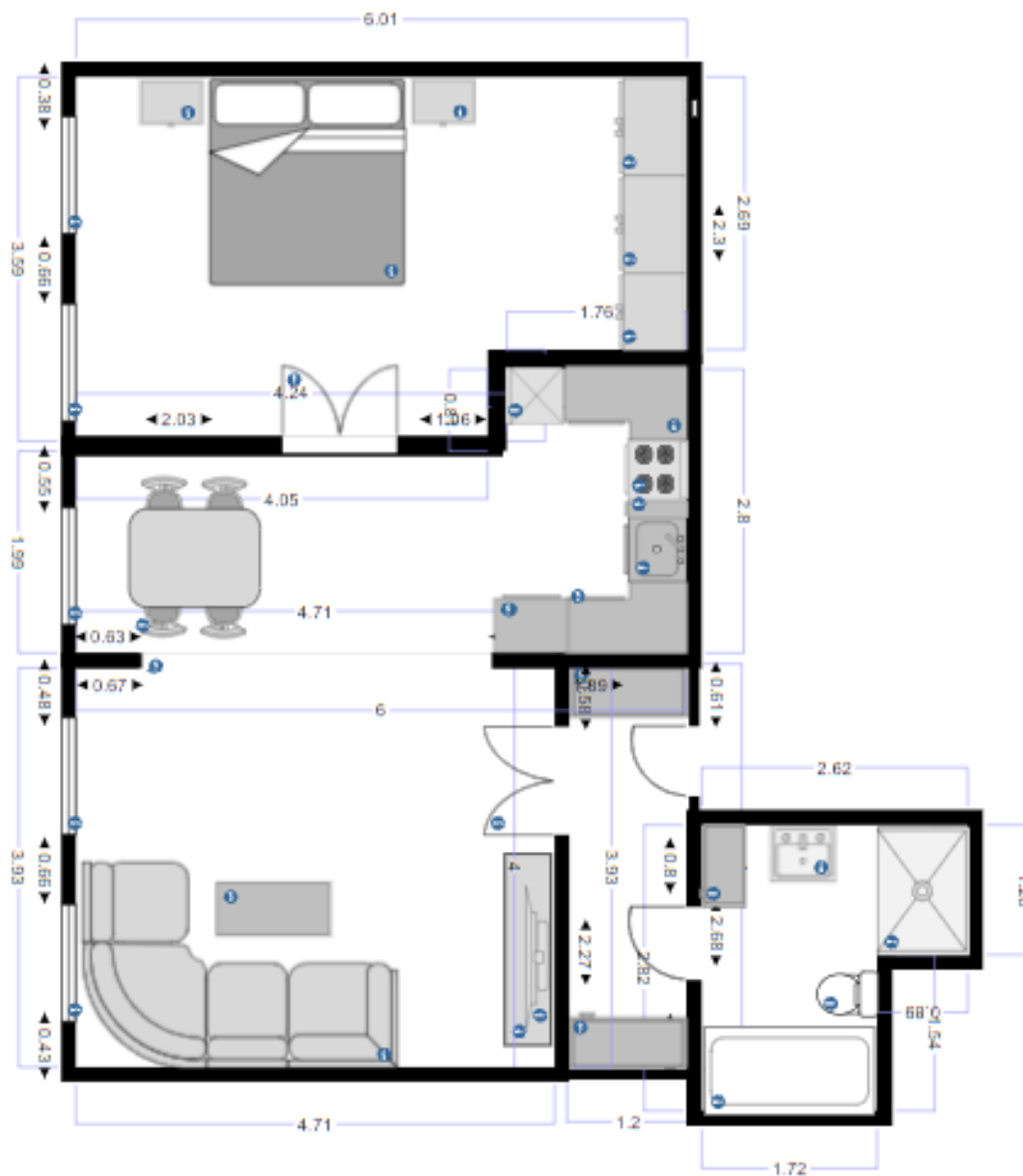
\* Area of the unit according to the Civil Code. The area consists of the sum total area of the entire unit bounded by perimeter walls.



# Apartment One-bedroom (2+kk)

Rented

60 m<sup>2</sup>, Prague 5, Malá Strana, Plaská





# Apartment One-bedroom (2+kk)

Rented

60 m<sup>2</sup>, Prague 5, Malá Strana, Plaská

