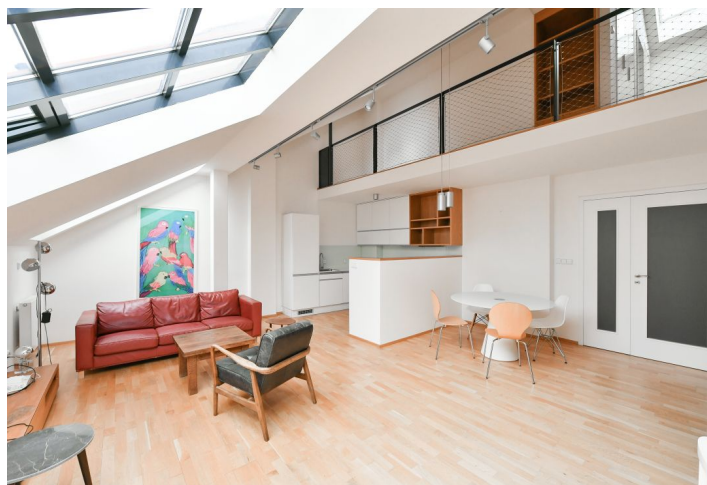
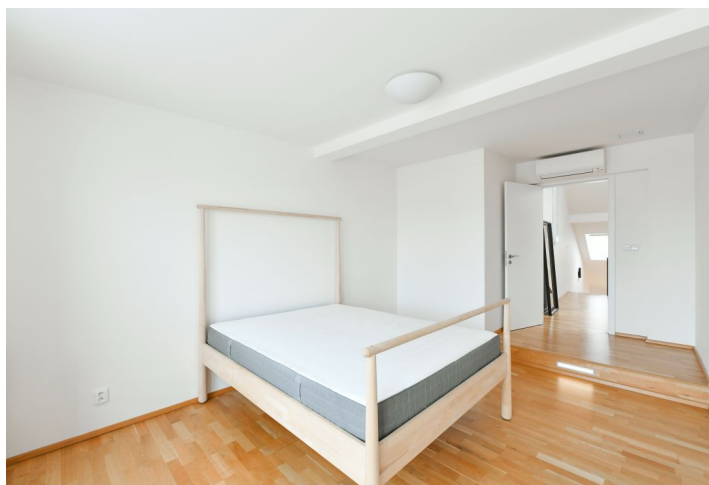
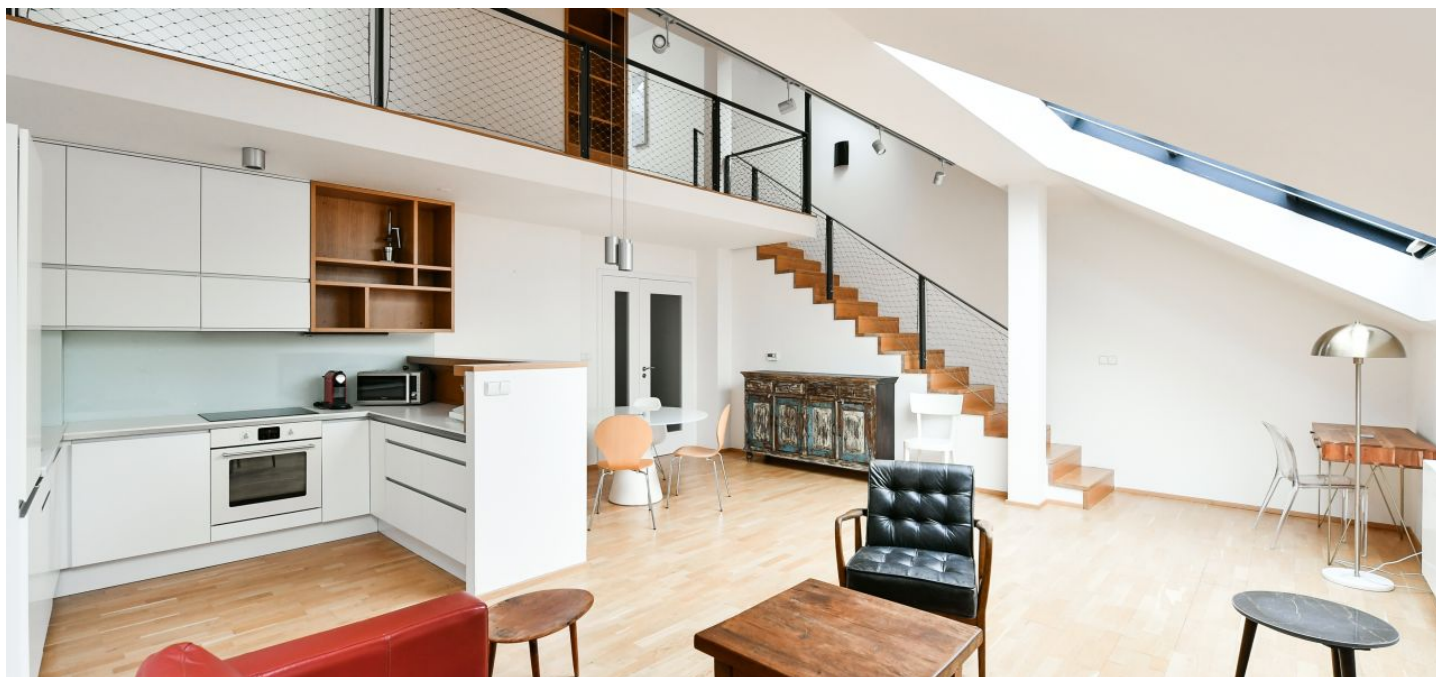




Apartment One-bedroom (2+kk)

Rented

109 m², Prague 1, Nové Město, Jungmannova





Apartment One-bedroom (2+kk)

Rented

109 m², Prague 1, Nové Město, Jungmannova

Total area	114 m ²
Floor area	109 m ²
Terrace	5 m ²
Cellar	Yes
PENB	G
Reference number	40197

This refurbished and fully furnished split-level apartment with terrace is situated on the fifth floor of a reconstructed traditional building with a lift and preserved original features. Located just a few steps from Wenceslas Square with the Muzeum and Můstek metro stations, the Franciscan Garden, the popular Myšák Confectionery and Gallery, and the Quadrio shopping mall. A prestigious address close to the Lucerna cinema and concert club, several theaters and numerous shops, boutiques, bistros, restaurants and more.

The lower level includes living room with a fully fitted open kitchen and atelier windows, guest toilet, storage room, and a spacious entry hall. The upper floor offers a gallery with built-in storage, one bedroom with access to the terrace providing views of the Petřín Hill and Prague Castle, bathroom with tub and toilet.

Air-conditioning in the bedroom, parquet floors and tiles, security entry door, remote controlled **outdoor blinds**, gas boiler, dishwasher, induction hob, **cellar**. Deposit for common building charges and water CZK 2500/month. Electricity and gas will be transferred to the tenant.

