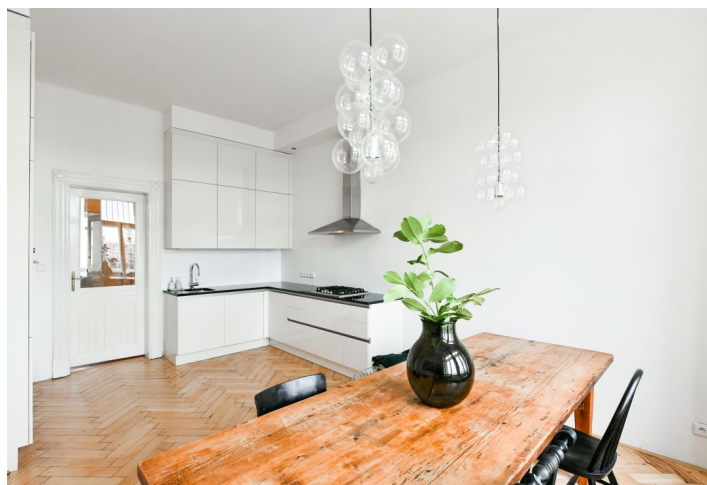
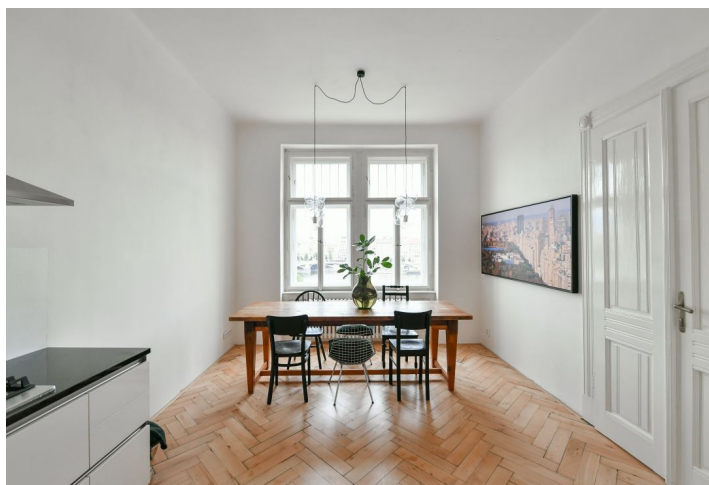




Apartment Two-bedroom (3+1)

Rented

115 m², Prague 5, Smíchov, Janáčkovo nábřeží





Apartment Two-bedroom (3+1)

Rented

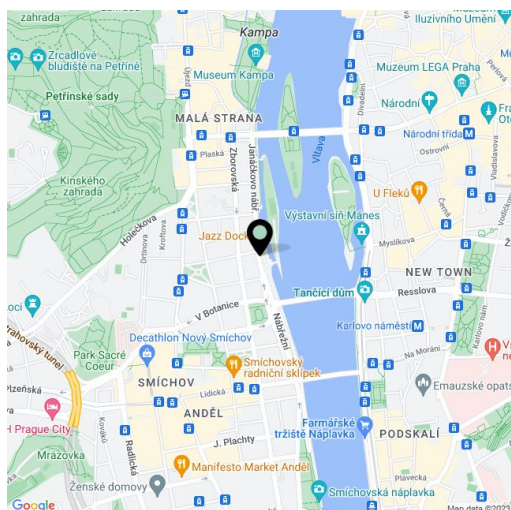
115 m², Prague 5, Smíchov, Janáčkovo nábřeží

Total area	117 m ²
Floor area*	115 m ²
Balcony	2 m ²
Parking	-
Cellar	Yes
PENB	G
Reference number	40307
Available from	Immediately

Fully refurbished partly furnished riverfront apartment. This is a 2-bedroom apartment with a balcony and outstanding unobstructed views up and down the Vltava river incl. the National Theater and the Dancing Building. Situated on the fourth floor in a completely renovated traditional building from 1910, with a lift. Located right on the Vltava riverbank, with quick tram connections to the city center, and within walking distance of the Nový Smíchov commercial and entertainment center and the Anděl metro station.

The interior features a living room with an access to **balcony**, a separate kitchen with a dining area, two bedrooms facing a quiet courtyard (one with a walk-in closet), a bathroom with tub, a separate toilet, utility room and an entry hall.

Wooden parquet floors, tiles, high ceilings, large windows with blinds, dishwasher, gas cooker, washer, **cellar**, gas boiler. Deposit for common building charges and water CZK 1250/month. Gas and electricity are paid separately.



* Area of the unit according to the Civil Code. The area consists of the sum total area of the entire unit bounded by perimeter walls.