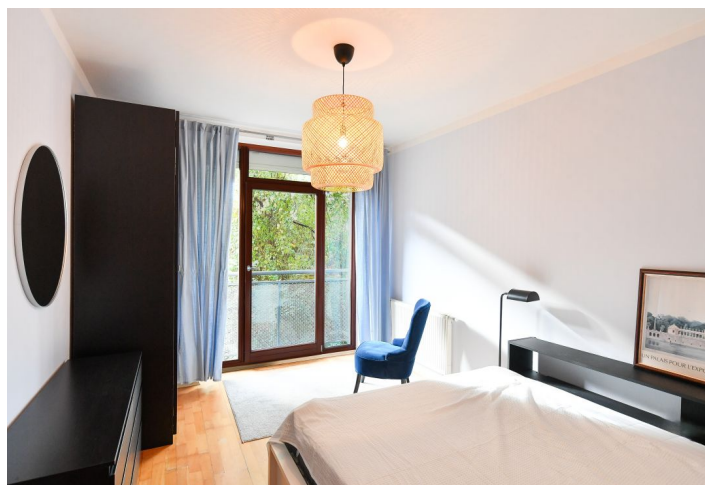
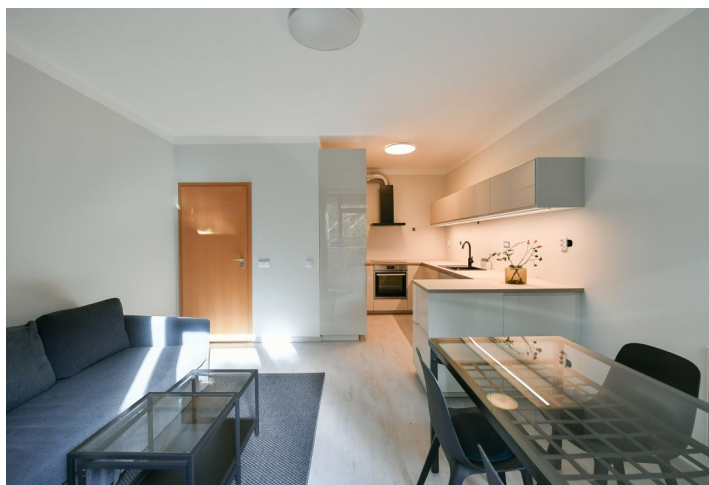




Apartment One-bedroom (2+kk)

Rented

50 m², Prague 4, Nusle, Pod Děkankou





Apartment One-bedroom (2+kk)

Rented

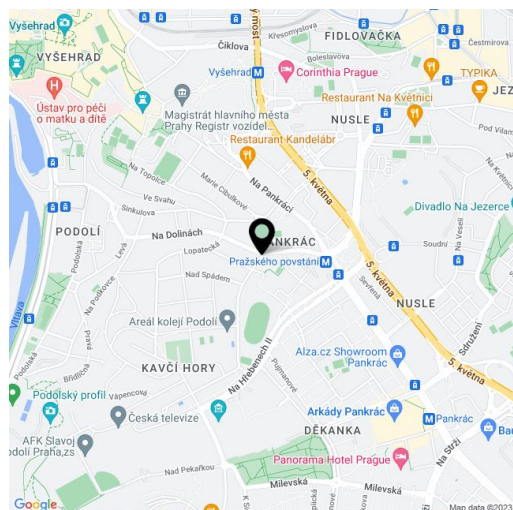
50 m², Prague 4, Nusle, Pod Děkanou

Total area	50 m ²
Parking	-
Cellar	Yes
Service price	Monthly deposit for services, water, and heating: CZK 4,500. Electricity is billed separately.
PENB	D
Reference number	40324
Available from	Immediately

This fully furnished apartment is on the 1st floor of a residential building with an elevator, near a residential area on the border of Podolí, Pankrác, and Vyšehrad, a location with great transport accessibility, plenty of greenery, and quick reach of complete amenities. Nearby is a sports complex, an athletic stadium, minigolf, a restaurant, a cafe, and a private clinic. The Pražského povstání metro station is a 5-minute walk away, and within 3 minutes by bus you can get to the Podolské nábřeží tram stop. Vyšehrad Park and Pankrác Central Park are close-by.

The apartment has a living room with a fully fitted open plan kitchen, a bedroom with a wardrobe, a bathroom with a bathtub and a toilet, and an entrance hall with a wardrobe.

New kitchen, laminate floors, tiles, large French windows facing greenery, security entry door, automatic exterior roller blinds, sofa bed, central heating, washer, dishwasher, induction cooktop, microwave oven, kitchenware, WiFi, cellar.



* Size of the unit according to the Housing Act.

The area consists of the sum total of the internal area of every room.