



Apartment One-bedroom (2+kk)

Rented

59.3 m², Prague 8, Libeň, Nad Okrouhlíkem





Apartment One-bedroom (2+kk)

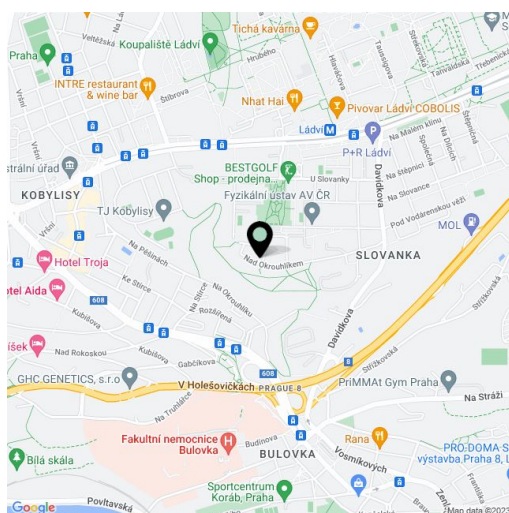
Rented59.3 m², Prague 8, Libeň, Nad Okrouhlíkem

Total area	63 m ²
Floor area*	59 m ²
Balcony	4 m ²
Parking	Garage parking.
Garage	Yes
Cellar	4 m ²
Service price	Monthly deposit for common building charges and water CZK 2,100 (for 1 person). Deposits for electricity and gas consumption are paid separately.
PENB	B
Reference number	40355
Available from	Immediately

Unfurnished apartment with a balcony and panoramic views of the city, situated on the 3rd floor in a residential building built in 2005 with an elevator and underground parking in Prague 8. Situated on a quiet street on the edge of a forest park - the Okrouhlík protected natural area, near the Ďáblický a Čimický forests, and a short walk from the Ládví metro station and tram stop. Full amenities are available nearby incl. a shopping center, several supermarkets, restaurants, the Šutka Water Park, and more.

The interior features a living room with a kitchen, 1 bedroom, a shower bathroom with a toilet and bidet shower, a utility room/storage room, and an entrance hall. The **balcony** is accessible from both main rooms.

Laminate floors, carpet and tiles, washing machine, gas boiler, blackout blinds in the bedroom, built-in wardrobes in the hallway, cellar. A **garage parking** space is included in the rent.



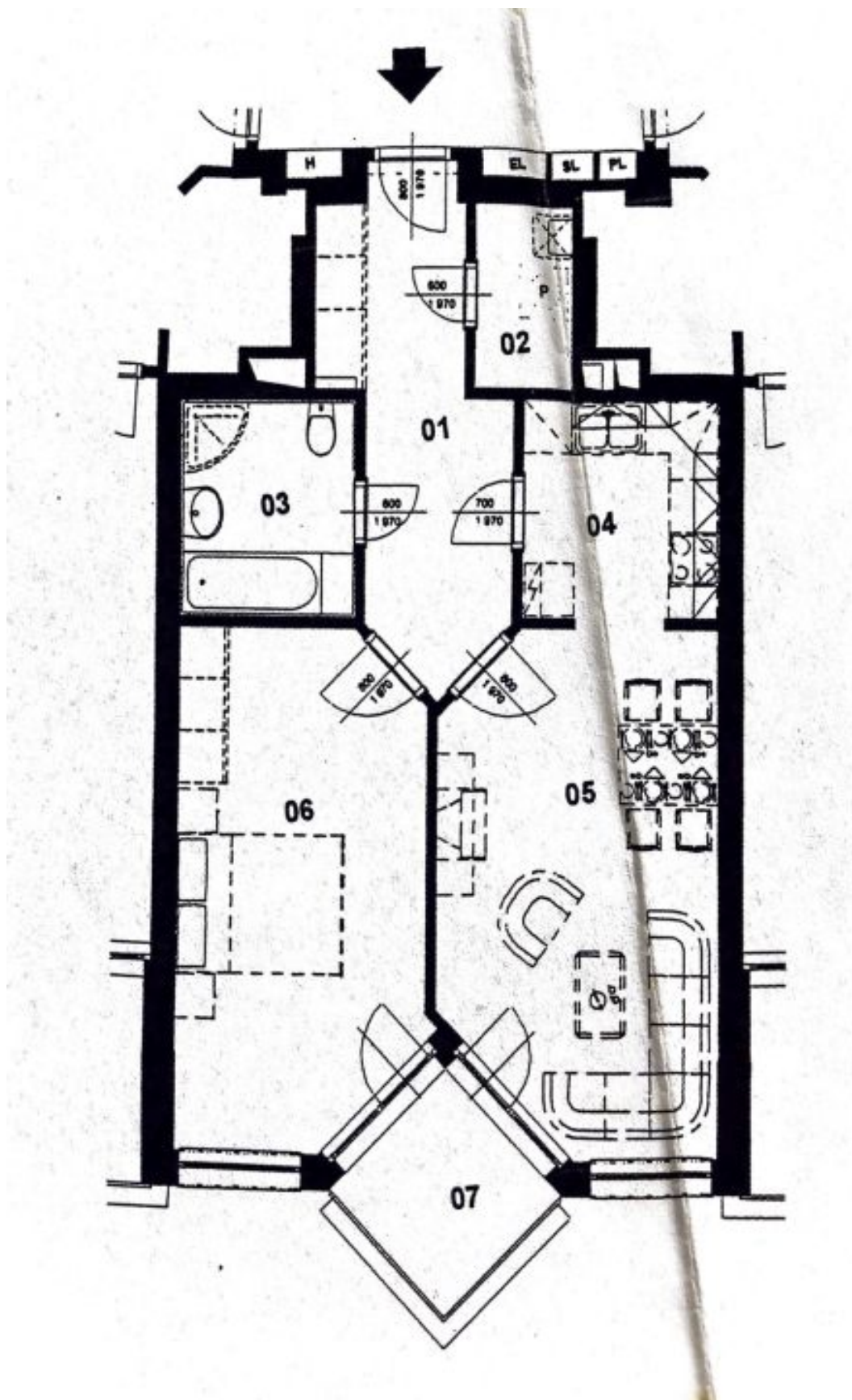
* Area of the unit according to the Civil Code. The area consists of the sum total area of the entire unit bounded by perimeter walls.



Apartment One-bedroom (2+kk)

59.3 m², Prague 8, Libeň, Nad Okrouhlíkem

Rented



**Apartment One-bedroom (2+kk)****Rented**59.3 m², Prague 8, Libeň, Nad Okrouhlíkem

OZNAČ.	ÚČEL MÍSTNOSTI	PLOCHA [m2]
01	HALA	9,90
02	KOMORA	2,50
03	LÁZEŇ, WC	5,30
04	KUCHYŇ	5,95
05	OBÝVACÍ POKOJ	18,60
06	LOŽNICE	17,05
CELKOVÁ PLOCHA BYTU		59,30
07	BALKON	3,90