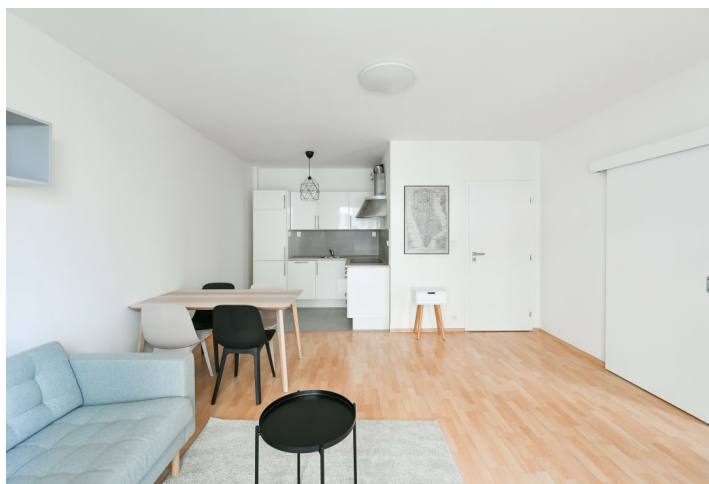
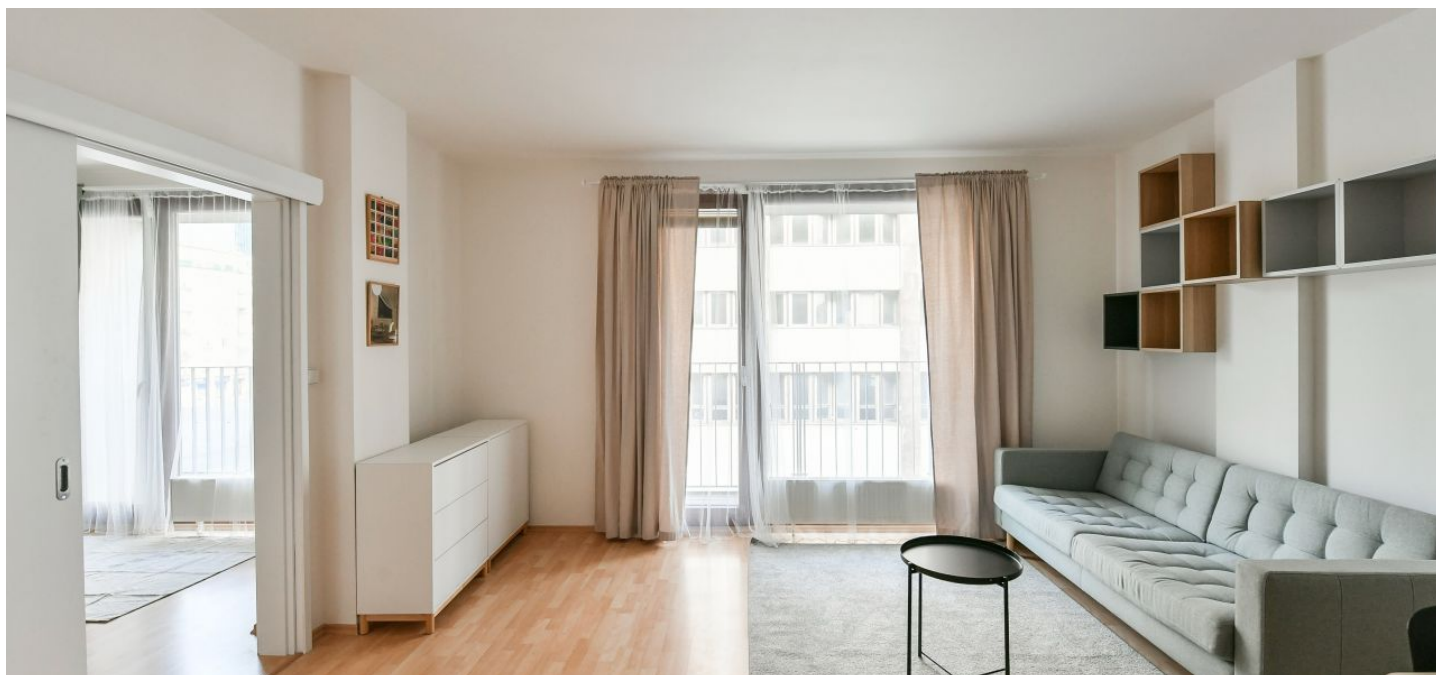




## Apartment One-bedroom (2+kk)

Rented

50 m<sup>2</sup>, Prague 7, Holešovice, V Háji





## Apartment One-bedroom (2+kk)

Rented

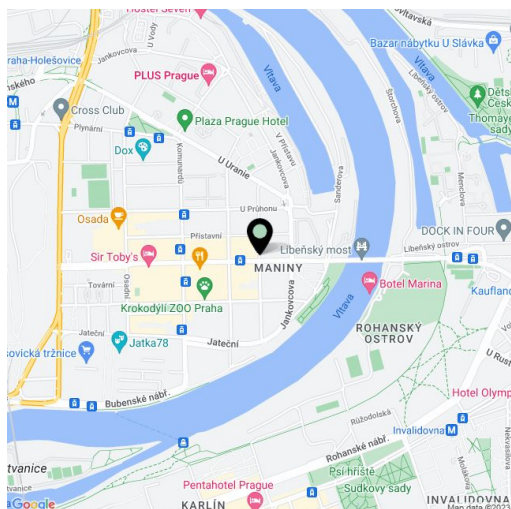
50 m<sup>2</sup>, Prague 7, Holešovice, V Háji

Total area	51 m <sup>2</sup>
Floor area*	50 m <sup>2</sup>
Balcony	1 m <sup>2</sup>
Parking	Garage parking.
Garage	Yes
Cellar	Yes
PENB	B
Reference number	40420
Available from	Immediately

This is a fully refurbished and furnished 1-bedroom apartment with two small balconies, on the fourth floor of the contemporary Avenium residential project with a 24/7 reception, a lift, parking, and a gated courtyard incl. a garden and a sandpit. Situated in a quiet street in Holešovice, Prague 7, in a location with full amenities within easy reach and excellent access to the city center - tram connections to Palmovka, Vltavská and Nádraží Holešovice metro stations. Conveniently located for the Holešovice Squash Center, the Rohanský ostrov driving range, the DOX Centre for Contemporary Art, the Prague Market and lots of theaters and music clubs incl. SaSaZu, La Fabrika, Rock Opera and Játka 78.

The apartment includes a living room with a fully fitted open plan kitchen, a bedroom, a bathroom with a bathtub and a toilet, and an entrance hall.

Laminated floating floors, tiles, central heating, washing machine, dishwasher, video entry phone, **storage room** on the same floor. A **garage parking** space is included. Monthly deposit for service charges, water and heating: CZK 4,000. Electricity is billed separately.



\* Area of the unit according to the Civil Code. The area consists of the sum total area of the entire unit bounded by perimeter walls.



## Apartment One-bedroom (2+kk)

Rented

50 m<sup>2</sup>, Prague 7, Holešovice, V Háji

