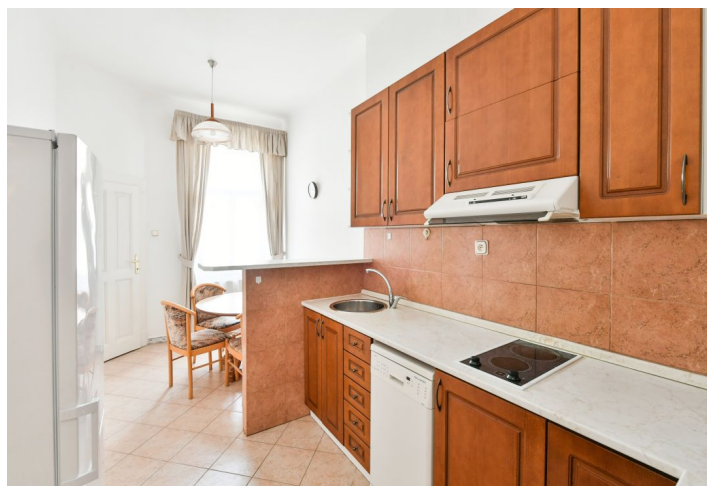




Apartment Two-bedroom (3+1)

€ 1 227 | CZK 31 000

104 m², Prague 2, Nové Město, Rašínovo nábřeží





Apartment Two-bedroom (3+1)

€ 1 227 | CZK 31 000

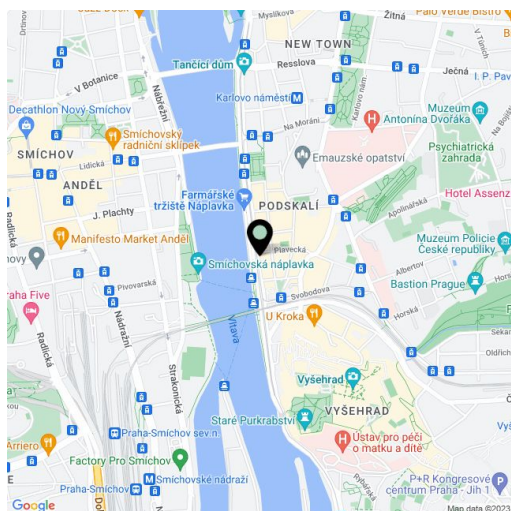
104 m², Prague 2, Nové Město, Rašínovo nábřeží

Total area	104 m ²
Parking	-
Cellar	-
Service price	Services, utilities, air-conditioning, Internet: CZK 10,000 per month.
PENB	G
Reference number	40423
Available from	01.02.2025

Boasting beautiful views of the Vltava River, Petřín Hill, and Prague Castle, this fully-furnished renovated riverfront apartment with preserved original details is situated on the 4th floor of a refurbished Art Nouveau building with an elevator right on the Vltava riverbank, near Vyšehrad Castle, moments from Palackého Square with a metro station and multiple tram links. A location with full amenities in the area, convenient to the French School.

The interior features a large central entrance hall, an **air-conditioned** living room offering beautiful views, a fully fitted eat-in kitchen with a pantry, two bedrooms, a bathroom including a bathtub and bidet, a separate toilet, and a **walk-in closet**.

Hardwood parquet floors, tiles, original **wooden doors**, **crystal chandeliers**, decorative **Dutch stove**, gas boiler, washing machine, dishwasher, microwave oven, iron and ironing board, satellite connection. **Parking** is available at CZK 3,300/month in underground garages located 15 minutes away from the building. **Mid-term rental** is available at a higher rent.



* Area of the unit according to the Civil Code. The area consists of the sum total area of the entire unit bounded by perimeter walls.



Apartment Two-bedroom (3+1)

€ 1 227 | CZK 31 000

104 m², Prague 2, Nové Město, Rašínovo nábřeží

