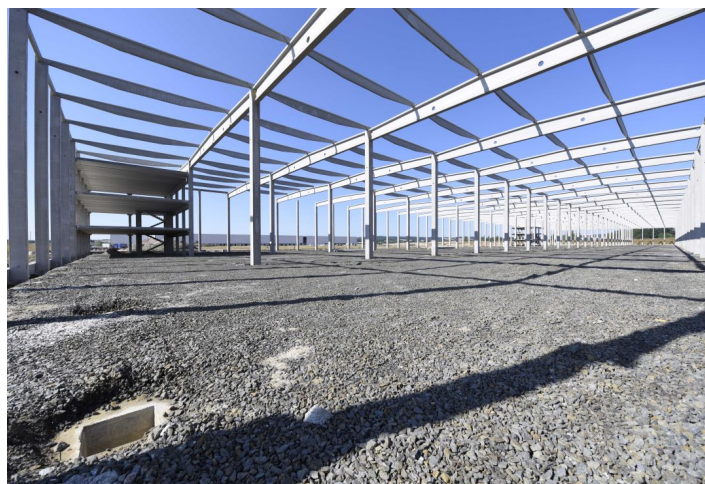




Logistic park

130 744 m², Plzeň-sever, Přehýšov

Ask for price

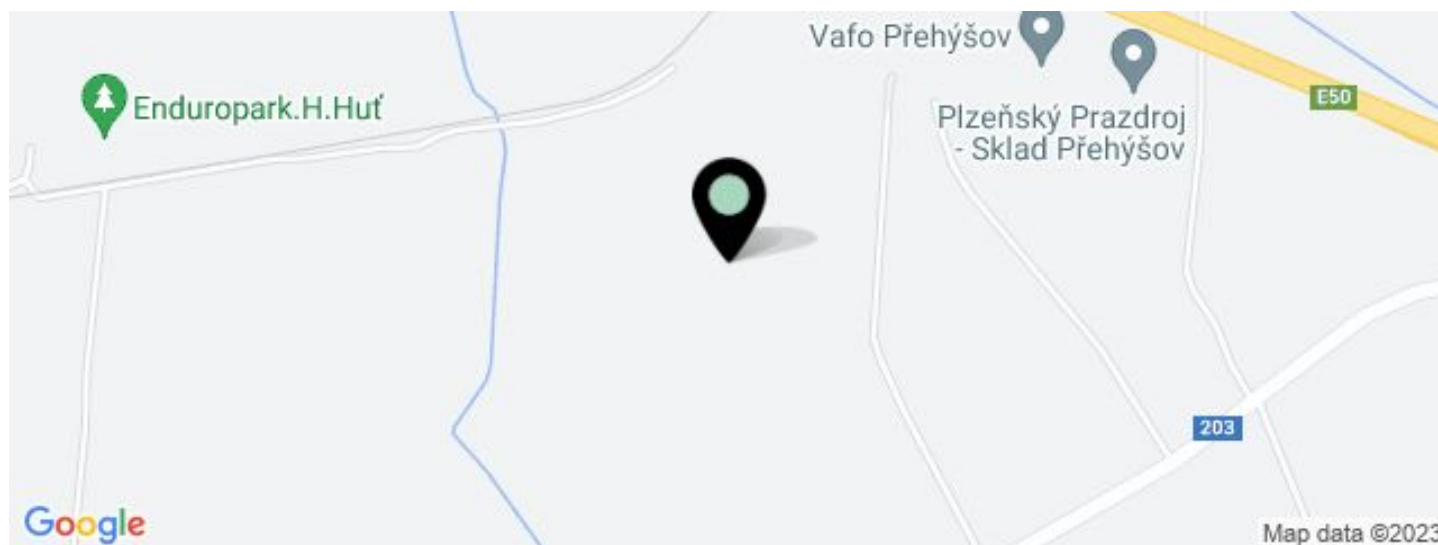




Logistic park

130 744 m², Plzeň-sever, Přehýšov

[Ask for price](#)



UNIT	AVAILABLE AREA	SERVICES	PARKING	MONTHLY RENT
Warehouse premises - Hall B1	12 000 - 50 427 m ²	not applicable	Yes	Ask for price
Warehouse premises - Hall B2, planned	12 000 - 50 427 m ²	1 CZK monthly per m ²	Yes	Ask for price
Warehouse premises - Hall B3, under construction	8 000 - 29 890 m ²	not applicable	Yes	Ask for price



Logistic park

130 744 m², Plzeň-sever, Přehýšov

Ask for price

Total area	130 744 m ²
Available area for rent	130 744 m ²
Ceiling height	12 m
Floor loading capacity	7 t/m ²
Column grid structure	—
Structure	Reinforced concrete structure
PENB	B
Reference number	40471

The logistic park offering warehouse and office space for lease. The park consists of 3 halls. The premises are suitable for distribution, logistics or light manufacturing.

Location:

The park is located directly on the D5 motorway at exit 100, near the village Přehýšov and is well visible and accessible for both heavy vehicles and visitors.

Features and Services:

- 24/7 security service
- Entry system with state registration plate reading
- Halls connected to gas in the amount of 241 sq.m./h
- Water from own well - approx. 100 sq.m./day
- Halls are connected to electricity with the possibility of drawing 6.4MW
- Halls ready for installation of photovoltaic panels
- BREEAM certification expected level Excellent
- 37 truck parking places
- 425 car parking places (37 for the disabled and 20 for electric cars)

Industrial/Warehouse space:

- Halls have a "cross-dock" configuration - access for heavy vehicles from both sides
- Storage in the entire hall area - no partitions required
- 6 x Drive-in
- 72 x Loading ramps
- Column grid structure: 12 x 24 m
- Clear height 12 m
- Floor loading capacity 7 T/sq.m
- Sprinklers
- Heating: min. 15 °C
- Variable design of built-ins

Office:

- Office space according to the client's requirements

Lessee pays no commission.



Situace areálu