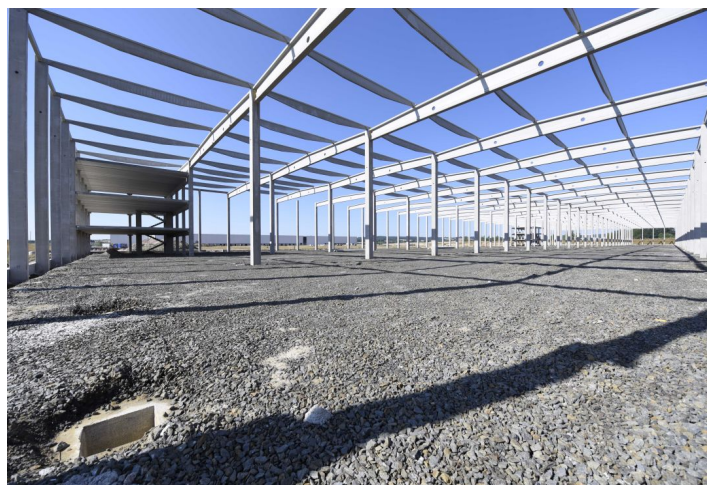




Industrial space

50 427 m², Plzeň-sever, Přehýšov, Přehýšov

Ask for price





Industrial space

50 427 m², Plzeň-sever, Přehýšov, Přehýšov

Ask for price

| | |
|--------------------------------|-------------------------------|
| Total area | 50 427 m ² |
| Available area for rent | 50 427 m ² |
| Min. area | 12 000 m ² |
| Ceiling height | 12 m |
| Floor loading capacity | 7 t/m ² |
| Column grid structure | — |
| Structure | Reinforced concrete structure |
| PENB | B |
| Reference number | 40473 |

50,427 sq.m. of industrial and office space for rent. The hall has been completed to the shell&core phase and can be finished according to the client's requirements (especially for office buildings) within 2-4 months. The premises are suitable for distribution, logistics or light manufacturing.

Location:

The park is located directly on the D5 motorway at exit 100, near the village Přehýšov and is well visible and accessible for both heavy vehicles and visitors.

Features and Services:

- 24/7 security service
- Entry system with state registration plate reading
- Halls connected to gas in the amount of 241 sq.m./h
- Water from own well - approx. 100 sq.m./day
- Halls are connected to electricity with the possibility of drawing 6.4MW
- Halls ready for installation of photovoltaic panels
- BREEAM certification expected level Excellent
- 37 truck parking places
- 425 car parking places (37 for the disabled and 20 for electric cars)

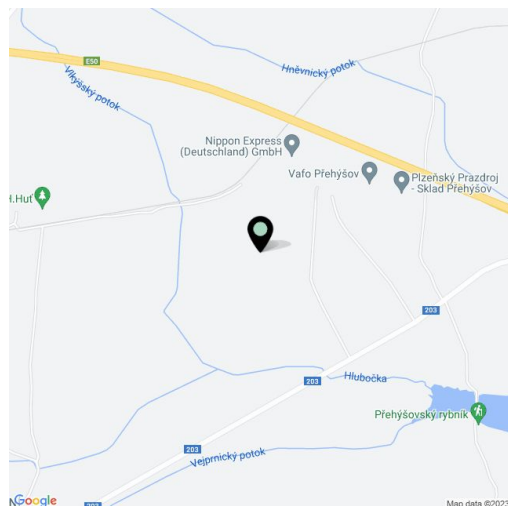
Industrial/Warehouse space:

- Halls have a "cross-dock" configuration - access for heavy vehicles from both sides
- Storage in the entire hall area - no partitions required
- 6 x Drive-in
- 72 loading bays
- Column grid structure: 12 x 24 m
- Clear height 12 m
- Floor loading capacity 7 T/sq.m
- Sprinklers
- Heating: min. 15 ° C
- Variable design of built-ins

Office:

- Office space according to the client's requirements

Lessee pays no commission.





Industrial space

50 427 m², Plzeň-sever, Přehýšov, Přehýšov

Ask for price

