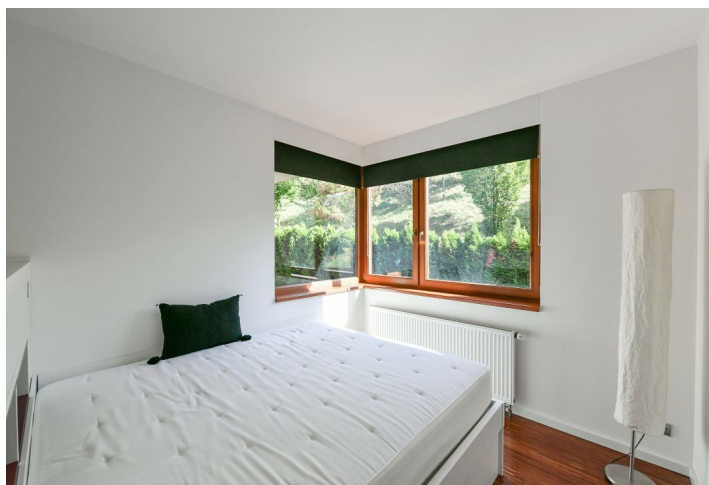




## Apartment One-bedroom (2+kk)

Rented

50.8 m<sup>2</sup>, Prague 5, Smíchov, Na Císařce





## Apartment One-bedroom (2+kk)

Rented

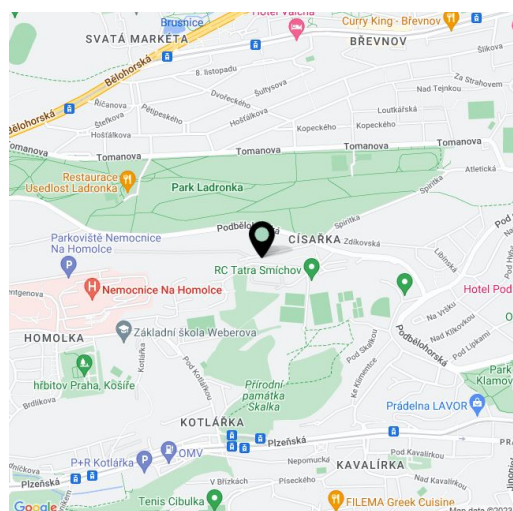
50.8 m<sup>2</sup>, Prague 5, Smíchov, Na Císařce

Total area	59 m <sup>2</sup>
Floor area*	51 m <sup>2</sup>
Terrace	8 m <sup>2</sup>
Garden	68 m <sup>2</sup>
Parking	Garage parking.
Garage	Yes
Cellar	-
PENB	C
Reference number	40588
Available from	Immediately

Boasting a terrace and a front garden, this is a furnished 1-bedroom apartment on the ground floor in the modern Císařka Residence project with a 24/7 reception and manned security, camera surveillance system and a private children's playground. Located in a quiet green neighborhood close to the Skalka natural park, the popular Ladronka Park with biking and in-line skating trails, and the Hvězda Park. Area with quick access to the city center and regular bus connections - the closest metro stations are Motol and Anděl.

The apartment offers a living room with a fully fitted kitchen, a dining area and **terrace / garden** access, a bedroom with a large built-in wardrobe, a bathroom including a walk-in shower, a separate toilet, and an entrance hall with a built-in wardrobe.

**Hardwood floors**, tiles, blinds, safety foils in the windows, central heating, washing machine, dishwasher, garden furniture, lawn mower. A **garage parking** space is included. Monthly deposit for service charges, water and heating CZK 3,500. Electricity is paid extra (transfer to the tenant). The apartment can be unfurnished.



\* Area of the unit according to the Civil Code. The area consists of the sum total area of the entire unit bounded by perimeter walls.



## Apartment One-bedroom (2+kk)

Rented

50.8 m<sup>2</sup>, Prague 5, Smíchov, Na Císařce

