



House Four-bedroom (5+kk)

Rented

286 m², Praha-západ, Horoměřice, Habrová





House Four-bedroom (5+kk)

Rented

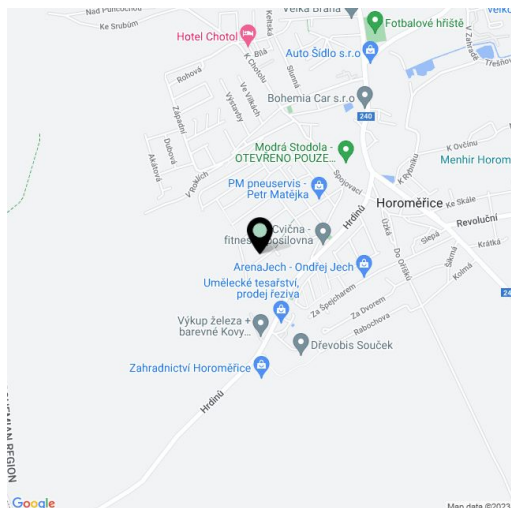
286 m², Praha-západ, Horoměřice, Habrová

Plot	830 m ²
Foot print	187 m ²
Garden	643 m ²
Parking	Garage parking and parking on the plot.
Garage	Yes
Cellar	Yes
PENB	G
Reference number	40590
Available from	Immediately

This is a 4-5-bedroom 2-bathroom semidetached home with a landscaped garden, in a quiet residential neighborhood in Horoměřice, Prague 6. Green location with very good connection to the city center, within easy reach of the Šárka natural preserve. Just a ten min. drive to the airport, the ISP international school in Nebušice, and 15 minutes to Dejvická metro station with full amenities in the area.

The ground floor features a spacious living room with a fully fitted open plan kitchen, a fireplace and access to the garden, a toilet, and an entrance hall with a built-in wardrobe. The first floor offers 3 bedrooms - the master bedroom with an en-suite bathroom (bathtub with a shower screen, toilet), a family bathroom (walk-in shower, toilet), and a fitted walk-in closet. In the basement there is a guest bedroom / family room, a utility / boiler room, a storage room, and garage access.

Vinyl floors, tiles, automatic exterior shades, washer, dryer, dishwasher, microwave oven, gas boiler, insect nets, alarm system. A garage and parking on the plot is available. Utilities are paid according to the real consumption in the approximate amount of CZK 8,000/month.

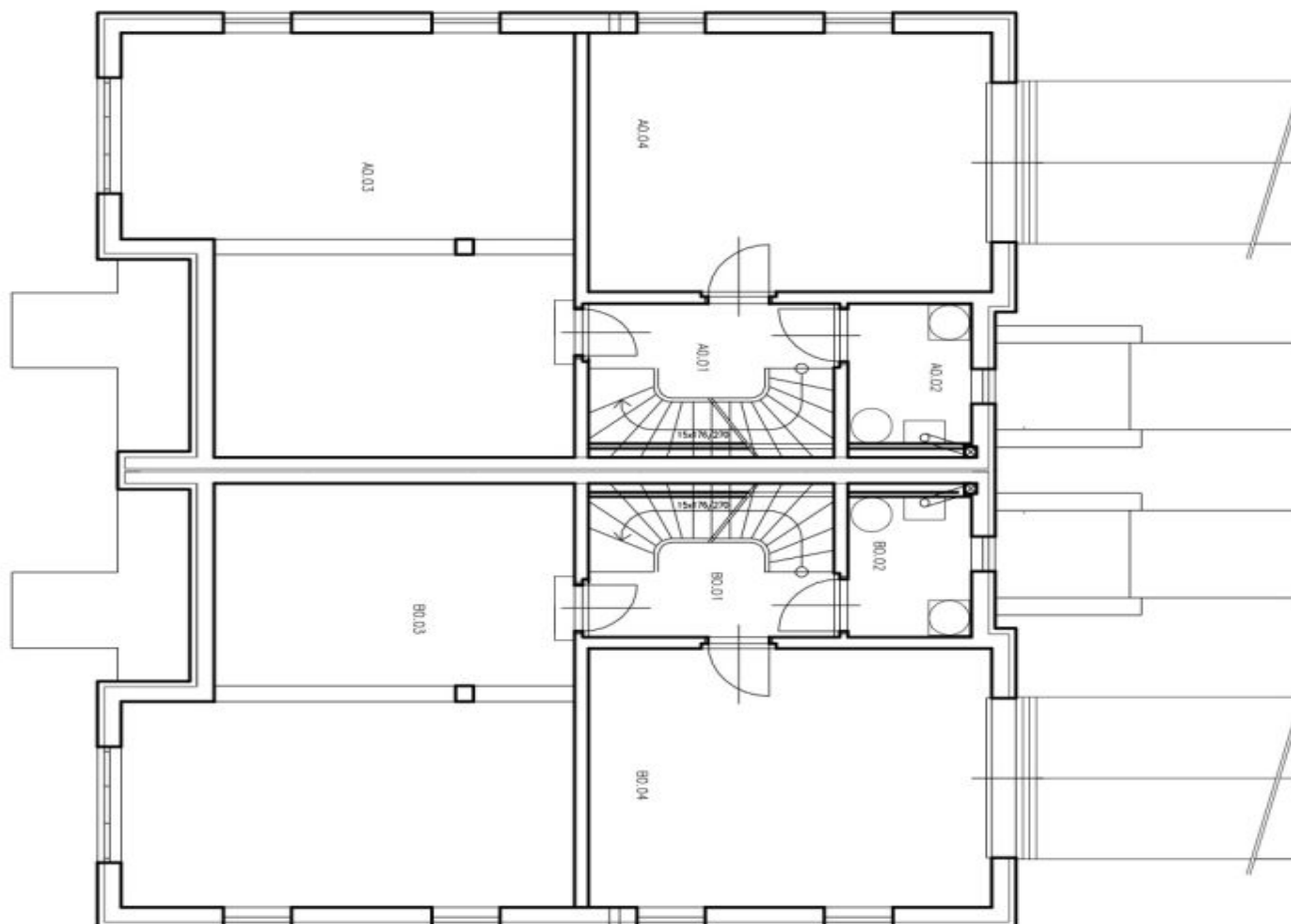




House Four-bedroom (5+kk)

286 m², Praha-západ, Horoměřice, Habrová

Rented



"SUTERÉN"

TABULKA MÍSTNOSTI

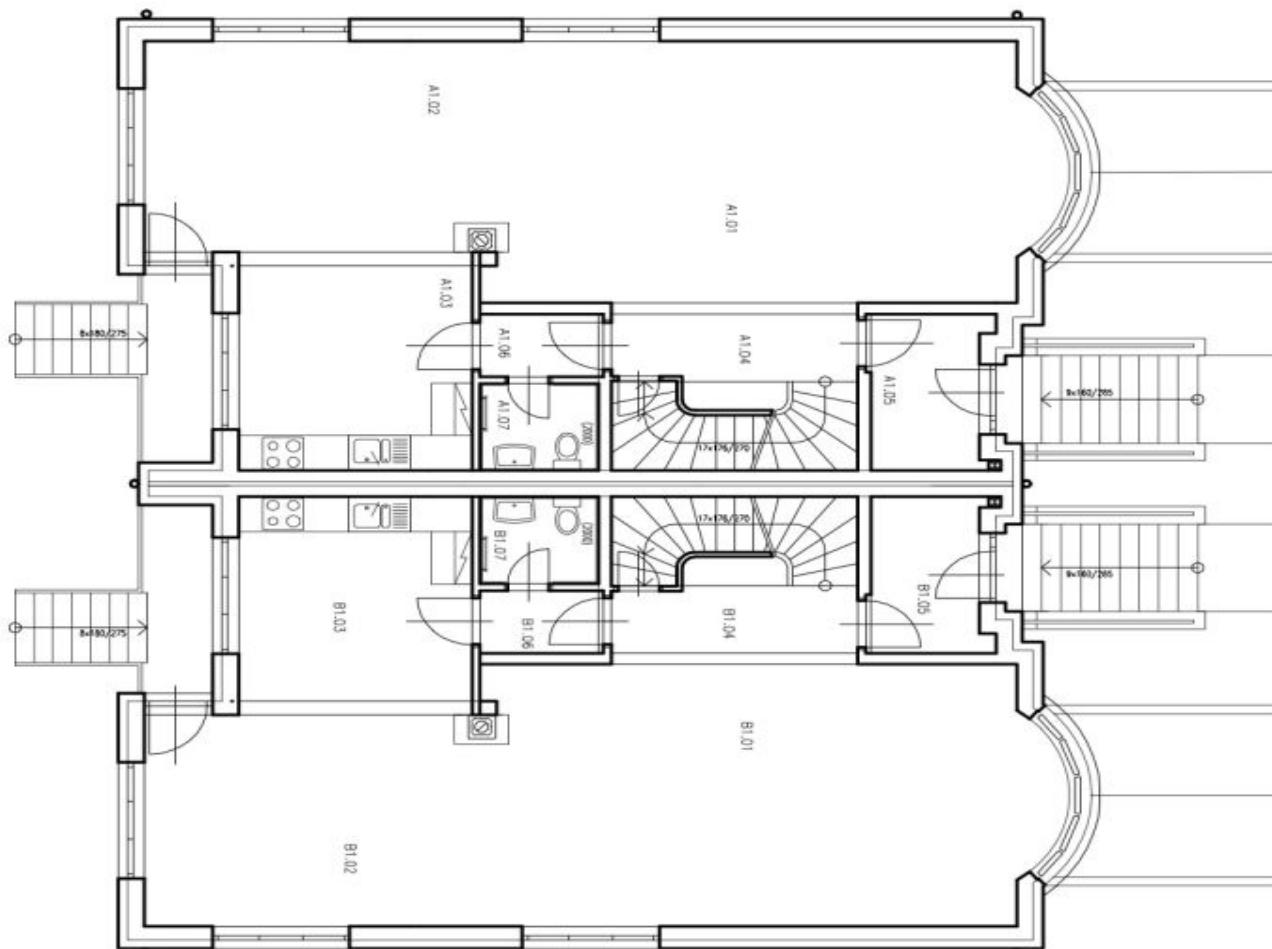
ČÍSLO MÍSTNOSTI	PLOCHA [m ²]	POVODNÍ	SEČER	SINČER	POZEMEK
A0.01 CHODBA	5,27	DOLEŽEL	NA/BA	NA/BA	
A0.02 TECHNICKÁ MÍSTNOST	4,48	DOLEŽEL	NA/BA	NA/BA	
A0.03 SPOČINEK	43,45	DOLEŽEL	NA/BA	NA/BA	
A0.04 KUCHA	28,28	DOLEŽEL	NA/BA	NA/BA	
B0.01 CHODBA	5,27	DOLEŽEL	NA/BA	NA/BA	
B0.02 TECHNICKÁ MÍSTNOST	4,48	DOLEŽEL	NA/BA	NA/BA	
B0.03 SPOČINEK	43,45	DOLEŽEL	NA/BA	NA/BA	
B0.04 KUCHA	28,28	DOLEŽEL	NA/BA	NA/BA	



House Four-bedroom (5+kk)

Rented

286 m², Praha-západ, Horoměřice, Habrová



"PŘÍZEMÍ"

TABULKA MÍSTNOSTI

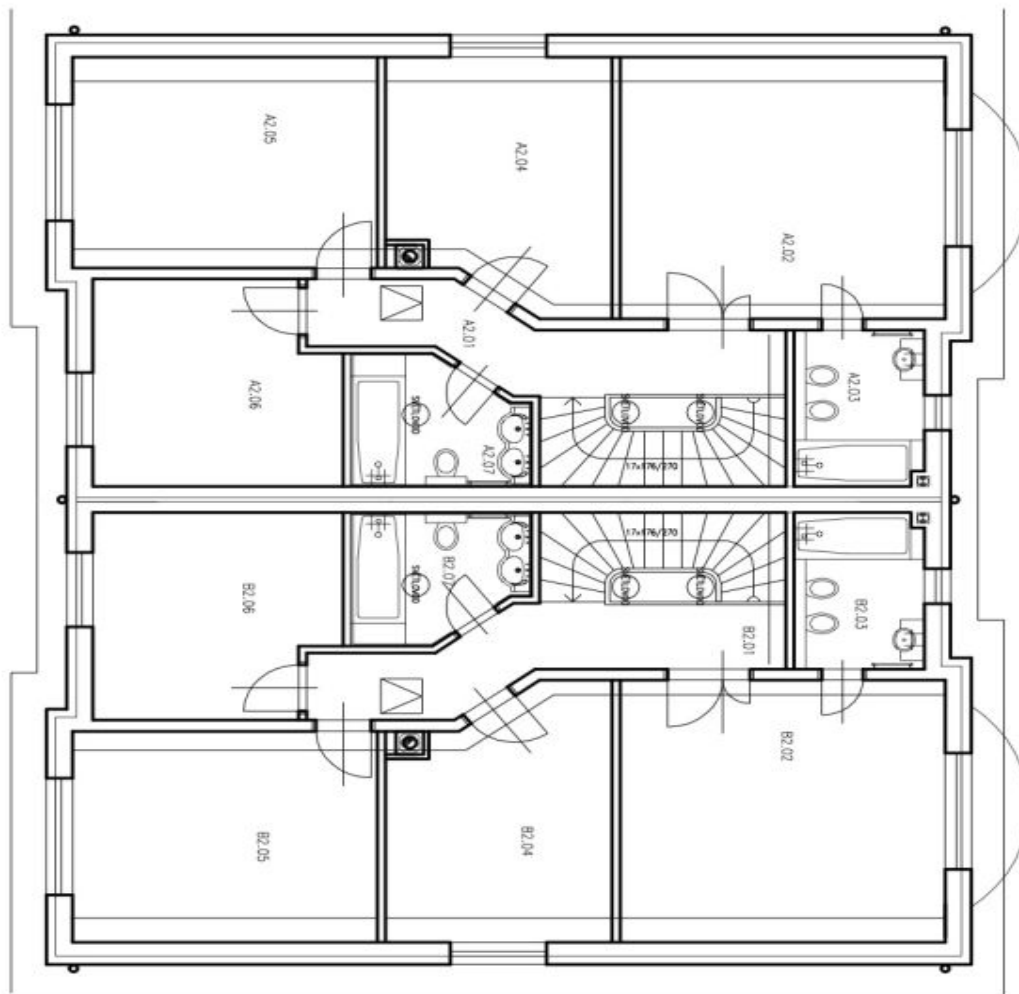
ČÍSLO NÁZEV	PLOCHA(m ²)	POVrch	STĚNY	STROP	PODMANKA
A1.01	34.62	LAMINÁT	UHL.ŠA	UHL.ŠA	
A1.02	19.32	OLAKOV.	UHL.ŠA	UHL.ŠA	
A1.03	12.78	OLAKOV.	UHL.ŠA	UHL.ŠA	
A1.04	5.39	OLAKOV.	UHL.ŠA	UHL.ŠA	
A1.05	4.27	OLAKOV.	UHL.ŠA	UHL.ŠA	
A1.06	1.94	OLAKOV.	UHL.ŠA	UHL.ŠA	
A1.07	2.98	OLAKOV.	UHL.ŠA	UHL.ŠA	KERAMICKÝ SÍTL
B1.01	34.62	LAMINÁT	UHL.ŠA	UHL.ŠA	
B1.02	19.32	OLAKOV.	UHL.ŠA	UHL.ŠA	
B1.03	12.78	OLAKOV.	UHL.ŠA	UHL.ŠA	
B1.04	5.39	OLAKOV.	UHL.ŠA	UHL.ŠA	
B1.05	4.27	OLAKOV.	UHL.ŠA	UHL.ŠA	
B1.06	1.94	OLAKOV.	UHL.ŠA	UHL.ŠA	
B1.07	2.98	OLAKOV.	UHL.ŠA	UHL.ŠA	KERAMICKÝ SÍTL



House Four-bedroom (5+kk)

286 m², Praha-západ, Horoměřice, Habrová

Rented



"1. PATRO"

TABULKA MÍSTNOSTI

ČÍSLO MÍSTNOSTI	POLOHA (m²)	POVRCH	STĚNY	STROP	PODLAŽKA
A2.01	CHOŠKA	8,04 OLAKOVA	VALENA	VALENA	
A2.02	LOŽNICE	21,37 KOBEREC	VALENA	VALENA	
A2.03	KOUPELNA	5,07 OLAKOVA	VALENA	VALENA	KERAMICKÝ SOKL
A2.04	POKOJ	13,14 KOBEREC	VALENA	VALENA	
A2.05	POKOJ	18,18 KOBEREC	VALENA	VALENA	
A2.06	POKOJ	12,18 KOBEREC	VALENA	VALENA	
A2.07	KOUPELNA	5,30 OLAKOVA	VALENA	VALENA	KERAMICKÝ SOKL
B2.01	CHOŠKA	8,04 OLAKOVA	VALENA	VALENA	
B2.02	LOŽNICE	21,37 KOBEREC	VALENA	VALENA	
B2.03	KOUPELNA	5,07 OLAKOVA	VALENA	VALENA	KERAMICKÝ SOKL
B2.04	POKOJ	13,14 KOBEREC	VALENA	VALENA	
B2.05	POKOJ	18,18 KOBEREC	VALENA	VALENA	
B2.06	POKOJ	12,18 KOBEREC	VALENA	VALENA	
B2.07	KOUPELNA	5,30 OLAKOVA	VALENA	VALENA	KERAMICKÝ SOKL