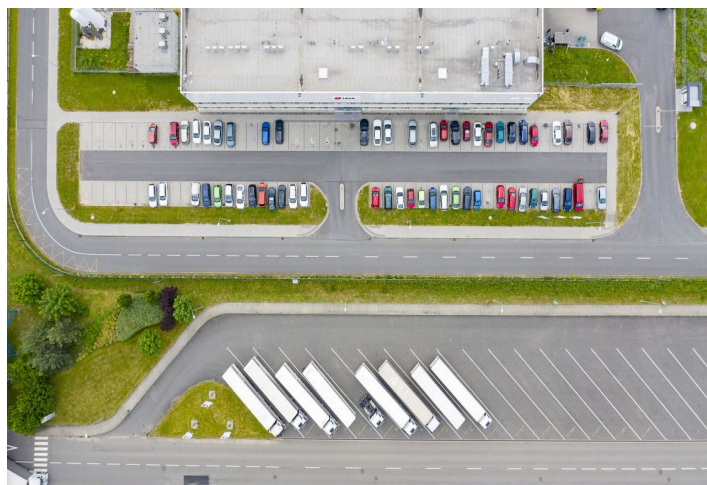




Warehouse space

Ask for price

27 884 m², Hranice na Moravě, Hranice - Město, Olomoucká





Warehouse space

27 884 m², Hranice na Moravě, Hranice - Město, Olomoucká

[Ask for price](#)

Total area	27 884 m ²
Available area for rent	27 884 m ²
Ceiling height	10.5 m
Floor loading capacity	5 t/m ²
Column grid structure	—
Structure	Reinforced concrete structure
PENB	G
Reference number	40614

27,884 sq.m. of A class storage, industrial and office space for lease in the logistic park situated close to Olomouc. Thanks to its location the park is suitable for domestic and also international activities. The premises are suitable for industrial centers and light manufacturing, offer a high standard of equipment, and can be designed based on specific requests and requirements. Available within 9 months after signing the contract.

Location:

The park is strategically located close to the D1 highway, about 40 km from Olomouc and 60 km from Ostrava. Good connection with the Ostrava Airport and the Polish border. Good accessibility by public transport – own railway line.

Features and Services:

- Flexible units (storage / office / light production / showroom)
- Onsite property management
- 24/7 security service and CCTV
- Park maintenance
- Sufficient parking space
- High standard of building

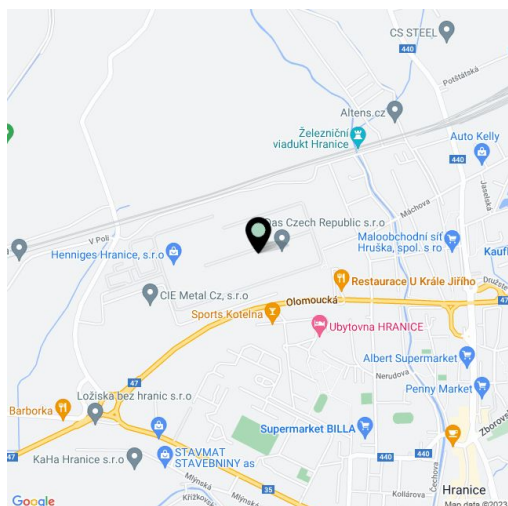
Industrial/storage space:

- 1 hydraulic ramp at about 600 m²
- Min. 1 direct entry to the unit
- Dimension of entrance gate 4x4,5 m
- Floor loading capacity 5 T/sq.m
- Clear height 10,5 m
- Column grid structure 12x24 m
- LED Light
- Sprinkler system
- Utility connections (water, sewage, gas, electricity)

Office:

- Turn key office
- Clear height 2,75 m
- Air-conditioning
- External blinds

Lessee pays no commission.





Warehouse space

27 884 m², Hranice na Moravě, Hranice - Město, Olomoucká

Ask for price

