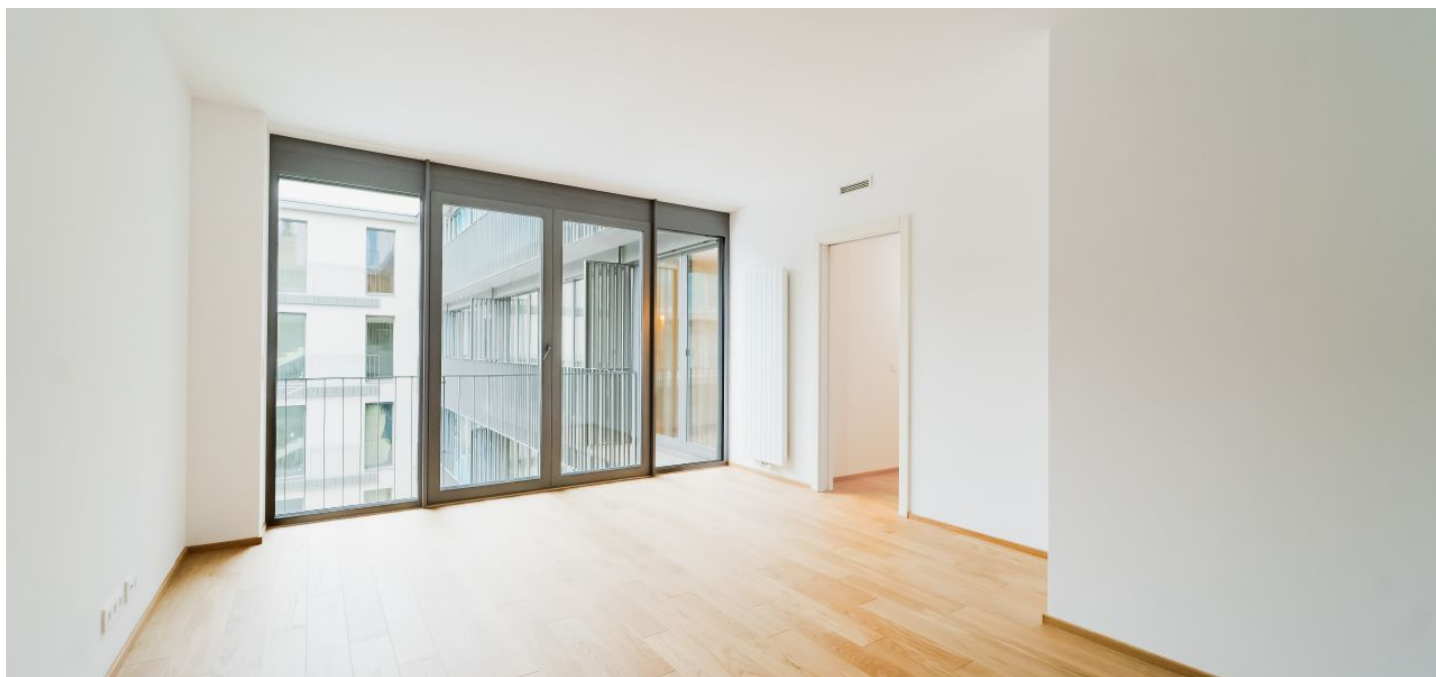




Apartment Three-bedroom (4+kk)

€ 491 975 | CZK 12 424 828

128 m², Ostrava, Moravská Ostrava, Masarykovo náměstí





Apartment Three-bedroom (4+kk)

€ 491 975 | CZK 12 424 828

128 m², Ostrava, Moravská Ostrava, Masarykovo náměstí

Total area	135 m ²
Floor area*	128 m ²
Balcony	7 m ²
Parking	Parking space at extra cost
Garage	Yes
Cellar	2 m ²
PENB	B
Reference number	40676

This bright apartment with two balconies and the possibility of purchasing a garage parking space is part of the unique **Nové Lauby** residential complex. This new project is being created right in the center of Ostrava near Masaryk Square with a fountain, within walking distance of a full range of services and a park.

The layout consists of a living room with a preparation for a kitchen, 3 bedrooms, a walk-in closet, a bathroom with a toilet, two guest toilets, and an entrance hall. Two balconies are accessible from the living room and one from the bedroom.

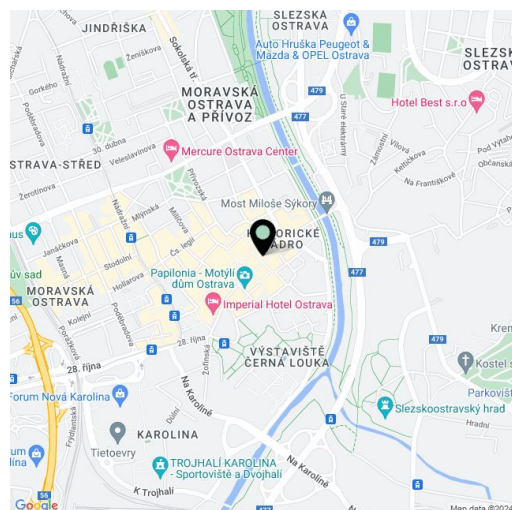
The project was designed by the renowned **Znamení čtyř - architekti studio**. The new five-story building will be covered with **greenery**, and a **landscaped atrium** will be created in the complex's center. The interior is illuminated by large-format windows with aluminum or wooden frames and the standard of equipment is offered in two options. There is a possibility to buy a **parking space**.

The apartment complex will become a natural part of the historic center of Ostrava. In the area around Masaryk Square, you can enjoy cafes, restaurants, a shopping center, a museum, a cinema, or a library. Schools and the Antonín Dvořák Theater are a few minutes' walk away. Part of the city monument zone is the **large park** on **Černá Louka** and the Ostravice River is lined with **bike paths**.

Floor area 130.98 m², balconies 7.2 m², a cellar 2.47 m².

The photos are of already completed units in the project.

For more information about the project, visit the website www.novelauby.cz



* Area of the unit according to the Civil Code. The area consists of the sum total area of the entire unit bounded by perimeter walls.