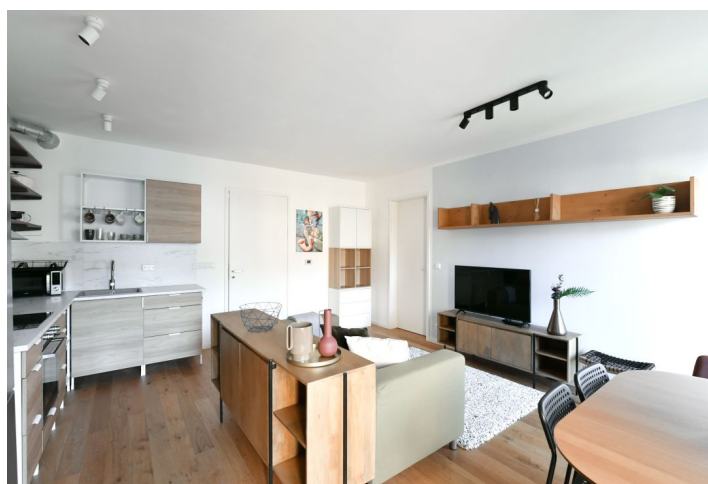




Apartment One-bedroom (2+kk)

Rented

59 m², Prague 5, Košíře, Na Pomezí





Apartment One-bedroom (2+kk)

Rented

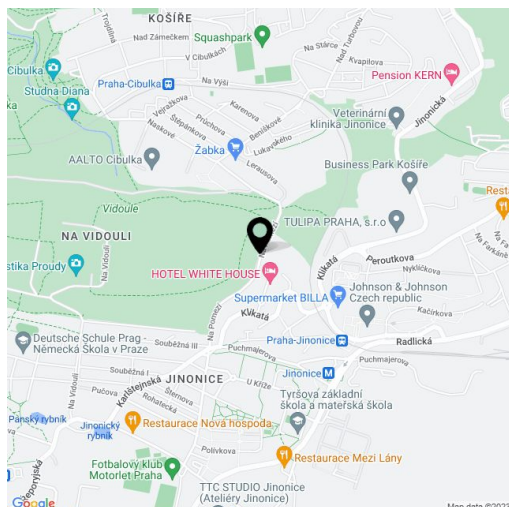
59 m², Prague 5, Košíře, Na Pomezí

Total area	64 m²
Floor area*	59 m²
Terrace	5 m²
Parking	27 000 CZK
Garage	Yes
Cellar	Yes
Service price	Monthly deposit for services, water, and heating: CZK 4,500. Electricity - transferred to the tenant. WiFi and cable TV charge: CZK 460/month.
PENB	B
Reference number	40730
Available from	Immediately

Benefiting from a terrace, this fully furnished 1-bedroom apartment is on the fourth floor in the new highly praised **SAKURA** project designed by the Jestico + Whiles international architectural studio. The gated residential project with a reception, security, parking, a cafe, a supermarket, a unique shared garden, and lush greenery is set in a quiet residential neighborhood on the edge of the Cibulka forest park, close to the Vidoule natural preserve. Conveniently located for the Jinonice metro station, the Nový Smíchov/Anděl commercial center and the German School, with full amenities in close vicinity.

The interior features a living room with a dining area and a fully fitted open plan kitchen, a bedroom with an en-suite bathroom (bathtub, toilet), a utility room, an additional guest toilet, and an entrance hall. Offering green views, the **terrace** is accessible from both main rooms.

Wooden floating floors, tiles, central underfloor heating, automatic exterior blinds, washing machine, induction cooktop, microwave oven, kitchenware, bed linen, video entry phone, **cellar**, elevator, pram storage, chip entry. A **garage parking** space is included.



* Area of the unit according to the Civil Code. The area consists of the sum total area of the entire unit bounded by perimeter walls.