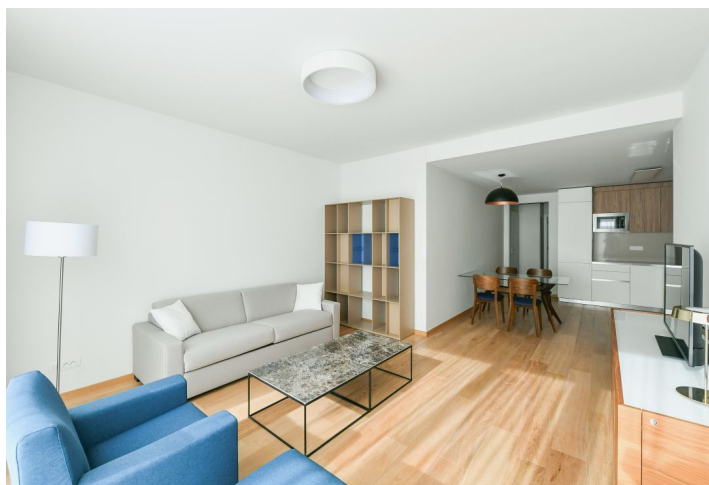
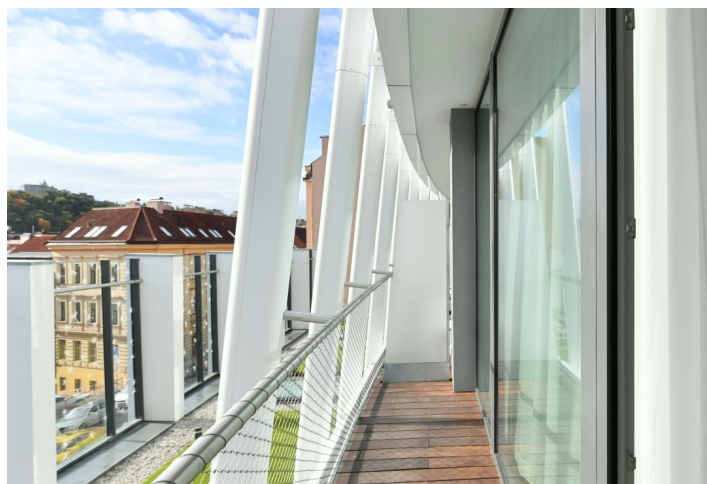
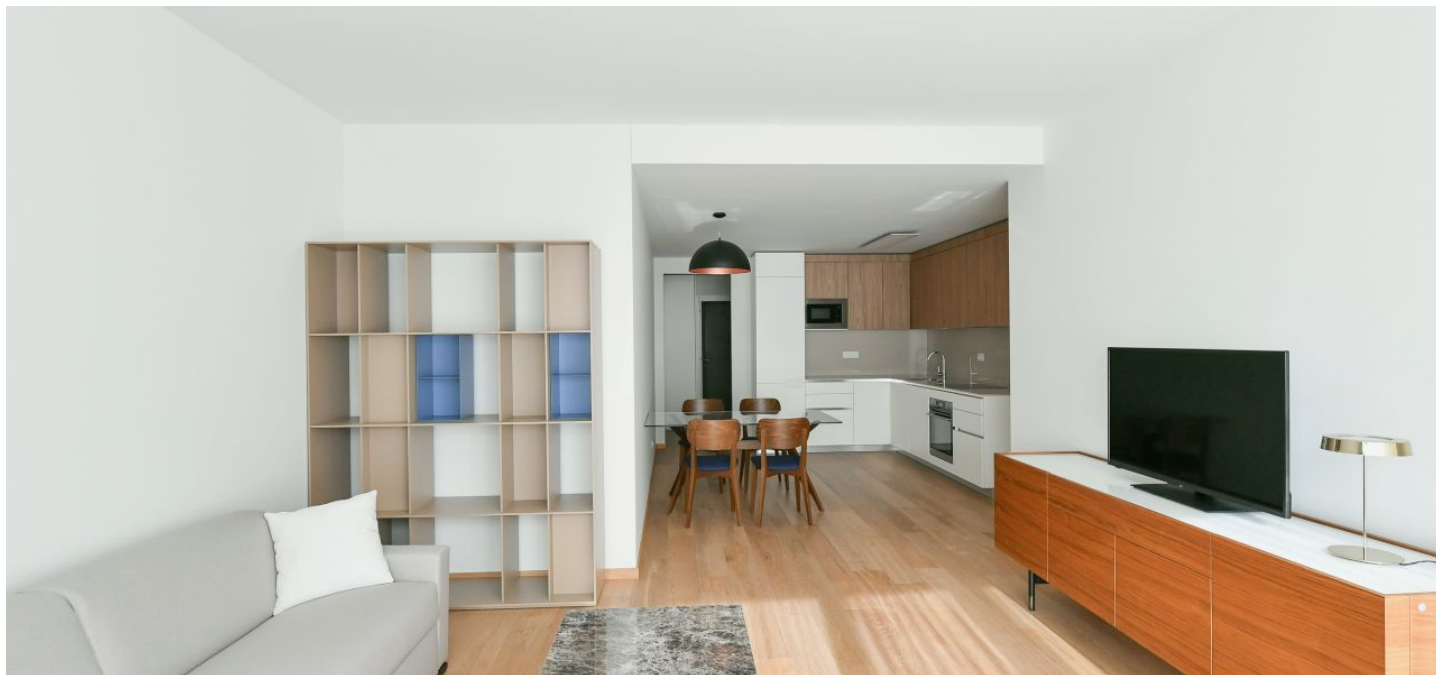




Apartment One-bedroom (2+kk)

Rented

78.7 m², Prague 5, Smíchov, Holečkova





Apartment One-bedroom (2+kk)

Rented

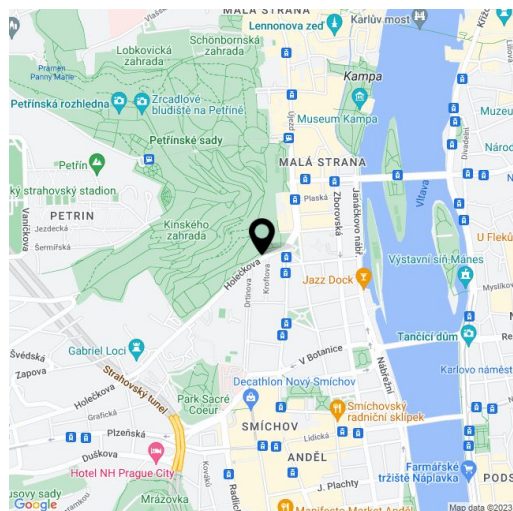
78.7 m², Prague 5, Smíchov, Holečkova

| | |
|------------------|--|
| Total area | 88 m ² |
| Floor area* | 79 m ² |
| Terrace | 9 m ² |
| Parking | Garage parking. |
| Garage | Yes |
| Cellar | - |
| Service price | Service charges, utilities, and Internet are included in the rent. Wellness fee EUR 100/month. |
| PENB | B |
| Reference number | 40753 |
| Available from | Immediately |

Boasting a terrace and charming green views, this premium, fully furnished apartment for rent is on the 1st floor of the new Ellipsis building with a reception, security, wellness, fitness (Prisma institut), a large terraced garden, and parking. Located in the attractive Hřebenka residential neighborhood near Kinský Garden and Petřín Hill Park, within easy reach of the French School and the Anděl/Nový Smíchov commercial and entertainment center. The location also offers regular bus connections and quick access to the city center and the airport.

The interior features a living room with a fully fitted open plan kitchen and dining area, a bedroom, a bathroom, an additional separate toilet, and an entrance hall. The **terrace** is accessible from both main rooms.

Heat recovery ventilation, hardwood floors, tiles, built-in wardrobes, underfloor heating, sofabed, washer/dryer, dishwasher, induction cooktop, microwave oven, kitchenware, bed linen, towels, TV, video entry phone, alarm, Internet (included), charging station for electric cars in the garage. **Garage parking** is available at EUR 200 + VAT/space/month.



* Area of the unit according to the Civil Code. The area consists of the sum total area of the entire unit bounded by perimeter walls.