



House Four-bedroom (5+1)

Rented

203 m², Prague 6, Dejvice, V Šáreckém údolí





House Four-bedroom (5+1)

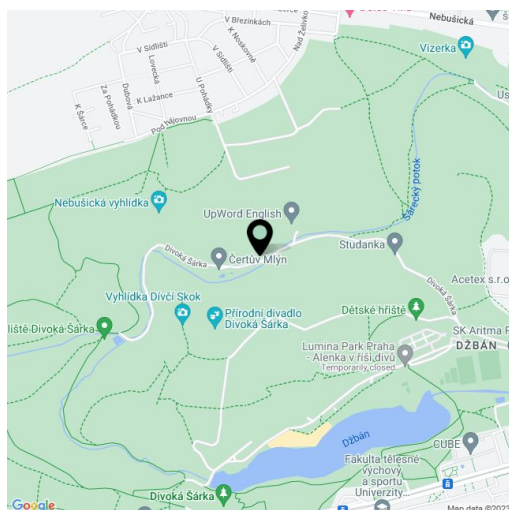
Rented203 m², Prague 6, Dejvice, V Šáreckém údolí

Plot	463 m ²
Foot print	234 m ²
Garden	229 m ²
Parking	Parking on the plot.
Cellar	-
PENB	G
Reference number	4084
Available from	31.03.2025

Completely reconstructed high standard 4-bedroom 3-bathroom semidetached house with patio and a landscaped front garden, situated in the charming Šárecké Valley surrounded by green hills, a brook and peaceful countryside. Peaceful location with good connections to the city center, the airport and international schools in Prague 6 (direct bus stop in front of the house). Just a few bus stops to the Dejvická metro station with full amenities in the area.

Ground floor: living room with a bay window and a fully fitted open kitchen with pantry, open dining room (designed as a winter garden) with garden / patio access, guest bedroom with a walk-in closet and an en-suite bathroom, boiler room, storage room, guest toilet, entry hall. First floor: three attic bedrooms, two bathrooms, walk-in closet, hall, balcony.

Fireplace, new kitchen, wooden floors, **light tunnels**, outdoor electrical blinds, washer, dryer, dishwasher, alarm, well, heat pump, garden furniture. One covered parking space plus parking in the driveway. Electricity and heating CZK 5000/month. Water, sewage and garden maintenance CZK 2250/month.

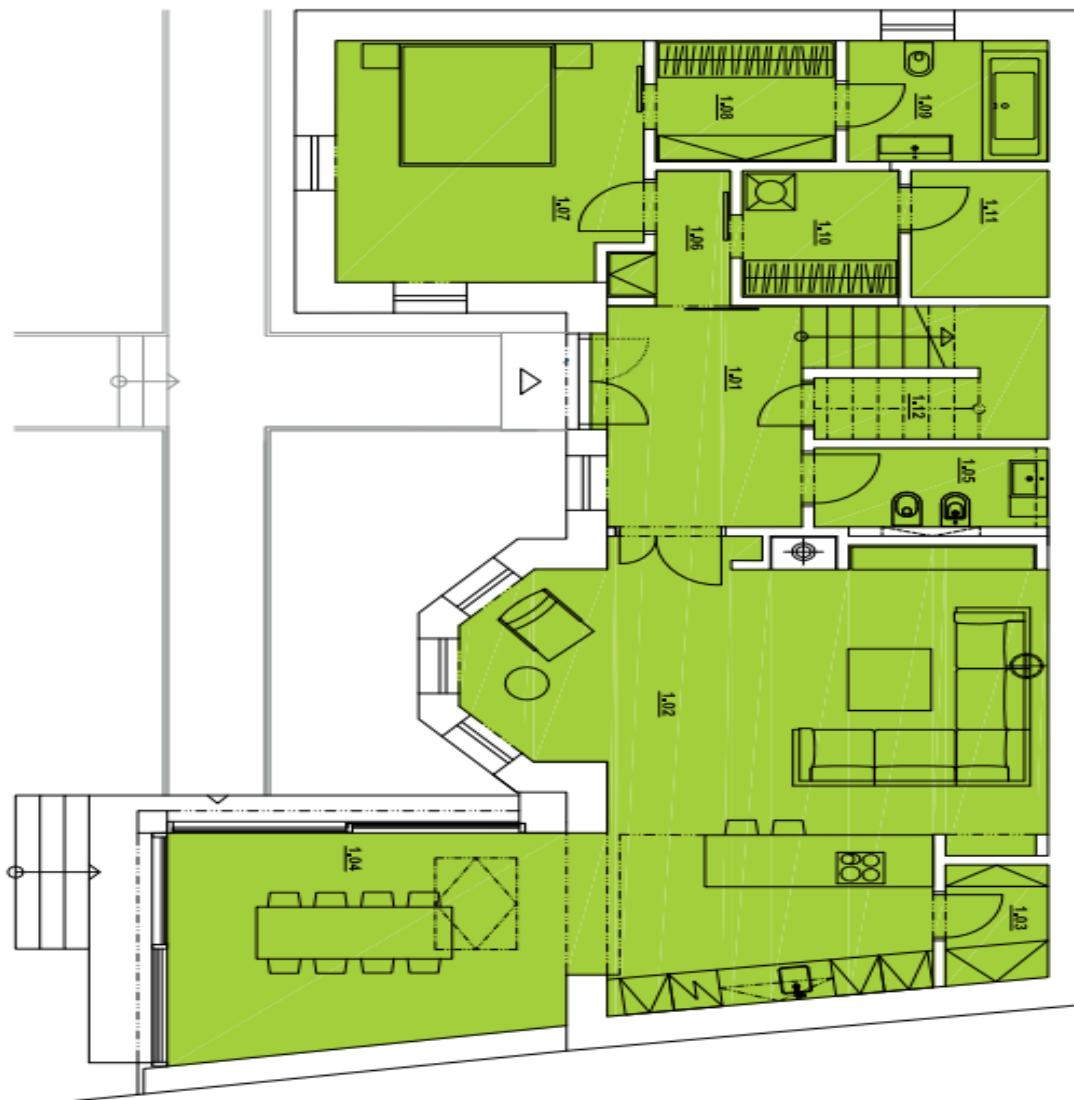




House Four-bedroom (5+1)

203 m², Prague 6, Dejvice, V Šáreckém údolí

Rented



№.	MÍSTNOST	ROOM	AREA [m ²]
1.01	VSTUPNÍ HALA	HALLWAY	8.80
1.02	OBÝVACÍ POKOJ / KČ	LIVING ROOM / KITCHEN	41.85
1.03	SPÍŽ	PANTRY	2.41
1.04	JÍDELNA	DINING ROOM	17.10
1.05	WC	WC	3.70
1.06	CHODBA	CORRIDOR	2.33
1.07	POKOJ / HEJTL /	BEDROOM / guest room /	14.57
1.08	ŠATNA	WALK-IN CLOSET	4.35
1.09	KOUPELNA	BATHROOM	4.87
1.10	ŠATNA / PRÁDELNA	UTILITY ROOM	3.87
1.11	TECHNICKÁ MÍSTN.	TECHNICAL ROOM	3.48
1.06	SKLAD	STORAGE	3.86
CELKOVÁ UŽITNÁ PLOCHA PATRA			111,09m²
TOTAL FLOOR USEFUL AREA			111,09m²



House Four-bedroom (5+1)

203 m², Prague 6, Dejvice, V Šáreckém údolí

Rented



No.	MÍSTNOST	ROOM	AREA (m ²)
2.01	CHODBA	CORRIDOR	10.10
2.02	PRACOVNA	STUDY	12.14
2.03	HLAVNÍ KOUPELNA	MASTER BATHROOM	7.37
2.04	ŠATNA	WALK-IN CLOSET	5.90
2.05	HLAVNÍ LOŽNICE	MASTER BEDROOM	16.90
2.06	DĚTSKÝ POKOJ 1	CHILDREN'S ROOM 1	12.07
2.07	KOUPELNA	BATHROOM	5.20
2.08	DĚTSKÝ POKOJ 2	CHILDREN'S ROOM 2	12.59
2.09	SCHODIŠTĚ	STAIRCASE	6.17
1.10	TERASA	TERRACE	3.45
CELKOVÁ UŽITNÁ PLOCHA PATRA			91,89m²
TOTAL FLOOR USEFUL AREA			91,89m²