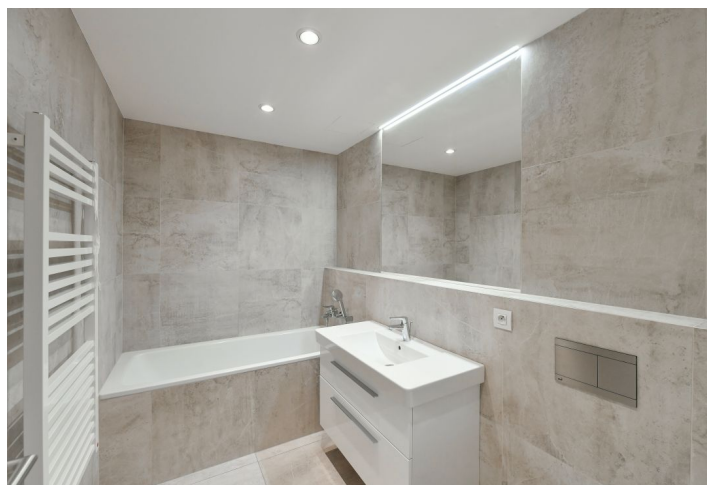




Apartment Two-bedroom (3+kk)

Rented

108 m², Prague 4, Podolí, Na Hřebenech II





Apartment Two-bedroom (3+kk)

Rented

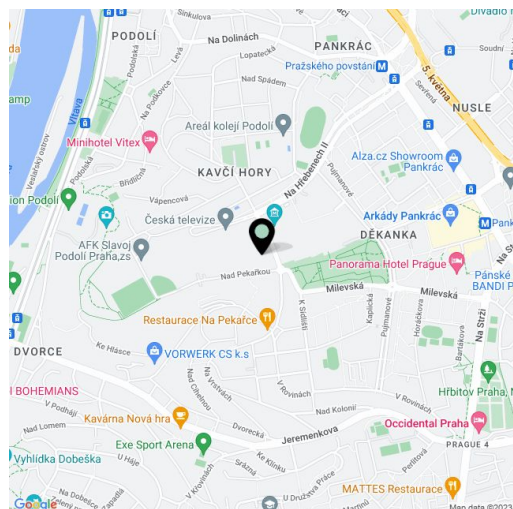
108 m², Prague 4, Podolí, Na Hřebenech II

Total area	116 m ²
Floor area*	108 m ²
Terrace	8 m ²
Parking	Two garage parking spaces.
Garage	Yes
Cellar	Yes
PENB	B
Reference number	40911
Available from	Immediately

Boasting beautiful views of Prague incl. the Prague Castle and Petřín Hill, this is a comfortable unfurnished 2-bedroom 2-bathroom apartment with a terrace. Situated on the third floor with lift in the modern Castle View Residence, with underground parking, reception and 24/7 security. Set in a quiet area next to the Czech TV grounds, with two parks in close vicinity, about a five minute walk from Pražského povstání metro station (line C). Conveniently located for rich amenities and the Prague 4 international schools.

The interior features a living room with a fully fitted open plan kitchen, access to the **terrace** and beautiful views of Prague, two bedrooms with built-in wardrobes, an en-suite bathroom (walk-in shower, toilet), a family bathroom (bathtub, toilet), and an entrance hall with a fitted **walk-in closet**.

Quality materials and finishes, built-in storage, floating **wooden floors**, tiles, automatic exterior blinds, underfloor heating in the bathrooms, **Miele** appliances, washer, dryer, dishwasher, induction cooktop, microwave oven, video entry phone, **cellar**. **Two garage parking spaces** are included. Service charges, water and heating: CZK 6,500 per month. Electricity is billed separately.



* Area of the unit according to the Civil Code. The area consists of the sum total area of the entire unit bounded by perimeter walls.



Apartment Two-bedroom (3+kk)

Rented

108 m², Prague 4, Podolí, Na Hřebenech II

Plocha bytu	107,8 m ²
Terasa (Lodžie)	8,30 m ²
MÍSTNOSTI	
1) Chodba + šatna	13,4 m ²
2) Ložnice	17,6 m ²
3) Koupelna + WC	3,7 m ²
4) Ložnice	13,5 m ²
5) Obývací pokoj + KK	54,2 m ²
6) Koupelna + WC	5,4 m ²
7) Terasa (Lodžie)	8,30 m ²
Parkovací stání	č. 2, č. 3
Sklep	č. 46

