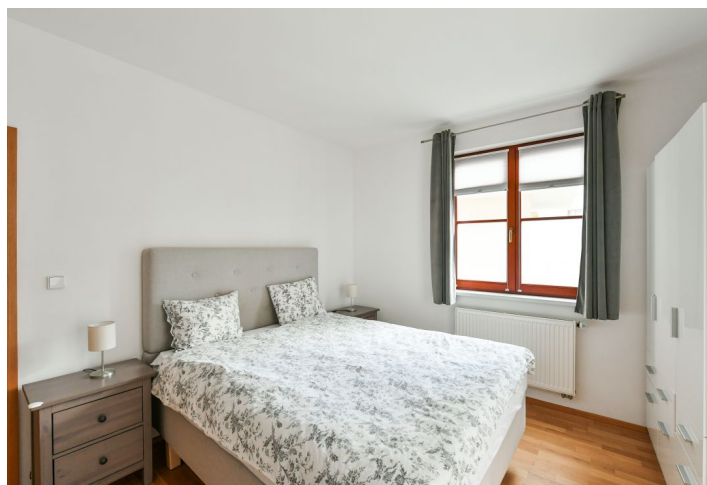




Apartment Two-bedroom (3+kk)

Rented

102.23 m², Prague 6, Dejvice, Lindleyova





Apartment Two-bedroom (3+kk)

Rented

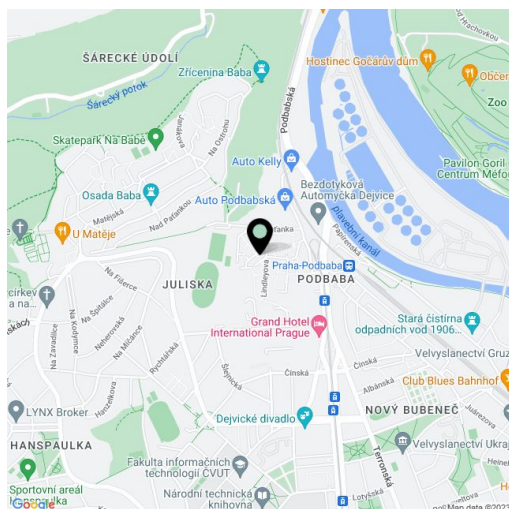
102.23 m², Prague 6, Dejvice, Lindleyova

Total area	113 m ²
Floor area*	102 m ²
Balcony	11 m ²
Parking	Garage parking.
Garage	Yes
Cellar	Yes
PENB	G
Reference number	40917
Available from	Immediately

Benefiting from a balcony, this is a furnished 2-bedroom apartment on the second floor in a modern residential project with underground parking and lots of greenery. Well located in a pretty natural park-like area under the Baba neighborhood, with full amenities in close vicinity. Within quick reach of the Vltava riverbank, Šárecké Valley and Stromovka Park, a few short tram or bus stops from Dejvická metro station (5 min. to the city center). Conveniently located for the airport and numerous Prague 6 international schools.

The apartment offers a living room with a fully fitted open plan kitchen and a dining area, two bedrooms with access to a shared **balcony**, a bathroom including a bathtub and a toilet, an additional separate toilet, a utility room, and an entrance hall.

Hardwood floors, tiles, central heating, pleated blinds, washer, dryer, dishwasher, induction cooktop, microwave oven, kitchenware, **cellar**, security cameras in the building. A **garage parking** space is included. Monthly deposit for service charges, water, heating and garage maintenance: CZK 4,200. Electricity is billed separately (deposit of CZK 1,100/month).



* Area of the unit according to the Civil Code. The area consists of the sum total area of the entire unit bounded by perimeter walls.