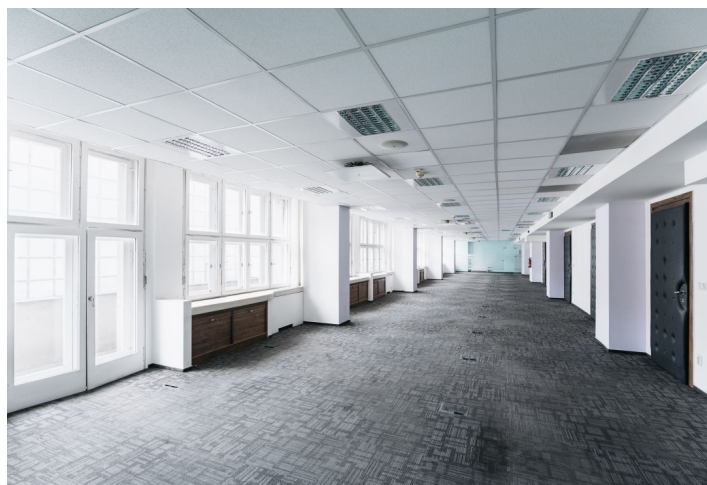
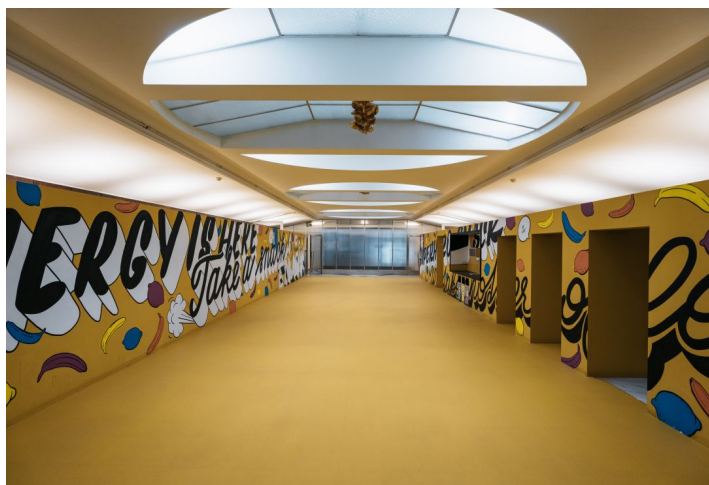
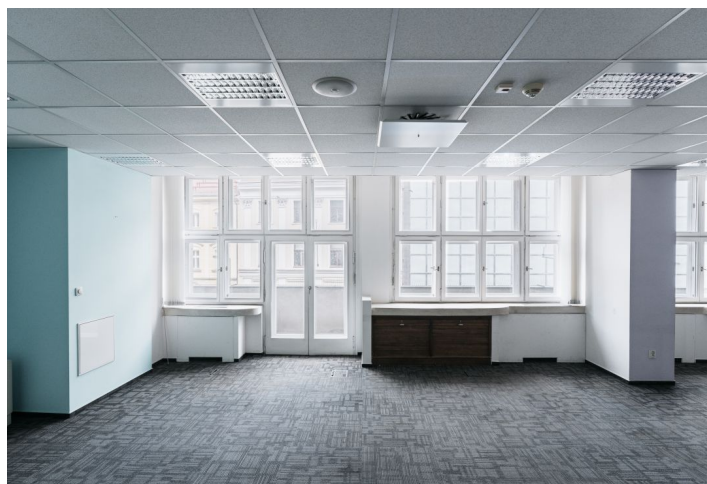
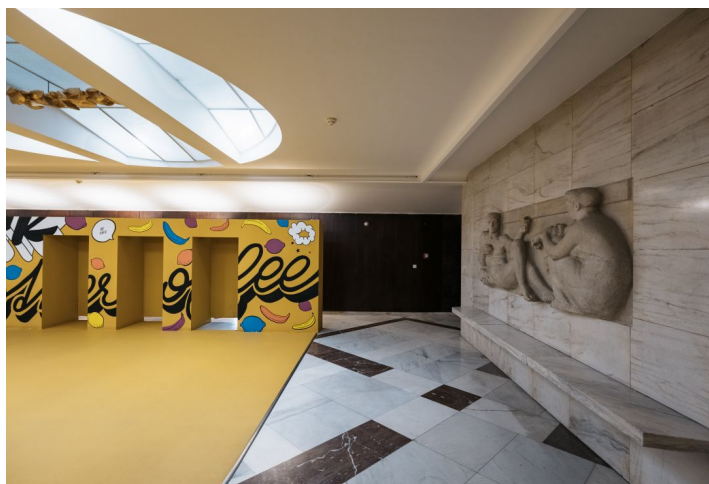
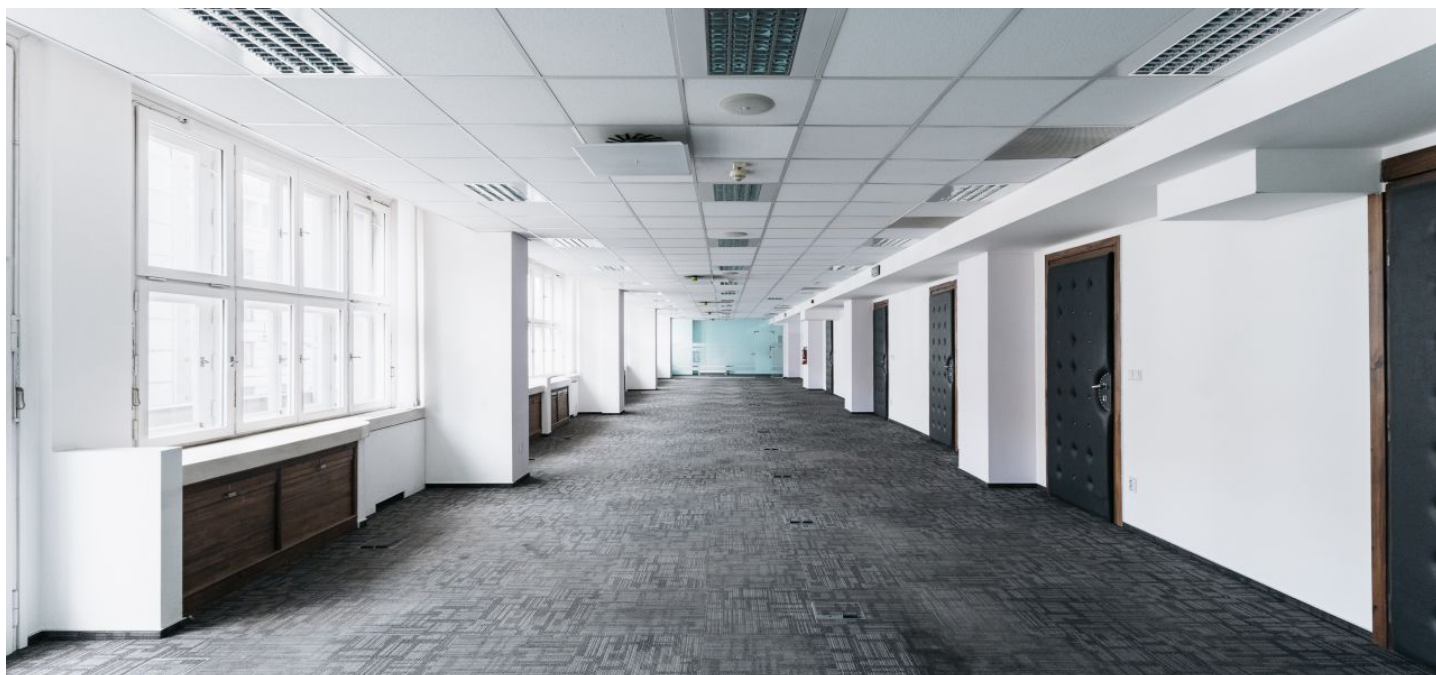




## Office space

€ 15.00 / m<sup>2</sup> | CZK 380 / m<sup>2</sup>

Praha 1, Nové Město, Na Poříčí



**Office space**

Praha 1, Nové Město, Na Poříčí

**€ 15.00 / m<sup>2</sup> | CZK 380 / m<sup>2</sup>**

|                         |                                    |
|-------------------------|------------------------------------|
| <b>Service price</b>    | 175 CZK monthly per m <sup>2</sup> |
| <b>Available area</b>   | 717 m <sup>2</sup>                 |
| <b>Cellar</b>           | -                                  |
| <b>Parking</b>          | EUR 200 / ps / month               |
| <b>PENB</b>             | C                                  |
| <b>Reference number</b> | 41060                              |

Office space for lease on the 2nd floor in a historically and architecturally valuable complex of buildings in the center of Prague. Space is divided into 4 spaces and open space. Own kitchen and balcony available.

**Location:**

Perfect accessibility by public transportation, by car and train and well developed infrastructure. There is a tram stop close to the building, while the Florenc metro and central bus station (line B, C), and the Masaryk railway station are in close vicinity.

**Features and Services:**

- Raised floor in the offices
- Comfort cooling
- Suspended acoustic ceiling with integrated lighting
- New light distribution in the ceilings
- Magnetic card access system
- 24-hour security service
- Reception desk
- Kitchen
- Balcony

Rental and service charges listed without VAT. Lessee pays no commission.

