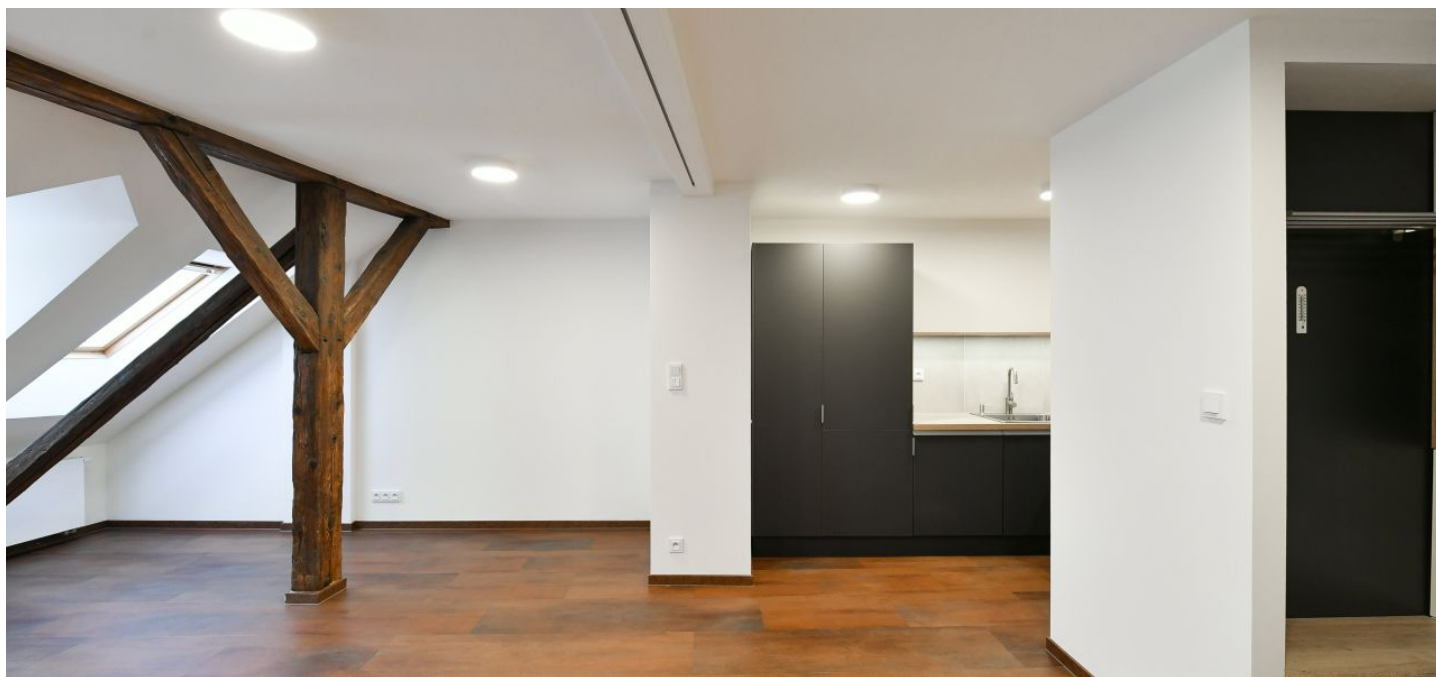




Apartment One-bedroom (2+kk)

Rented

69.5 m², Prague 1, Nové Město, Spálená





Apartment One-bedroom (2+kk)

Rented

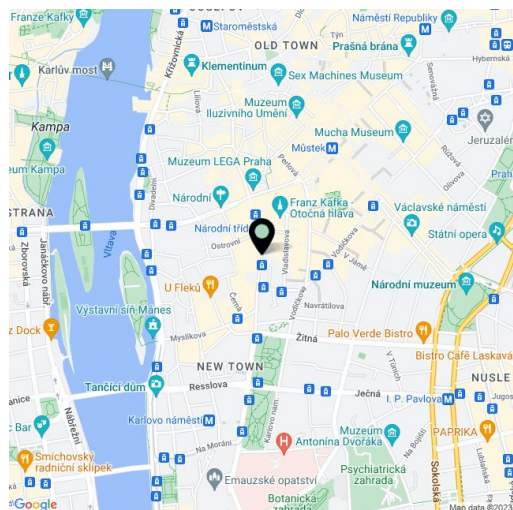
69.5 m², Prague 1, Nové Město, Spálená

Total area	70 m ²
Parking	-
Cellar	-
Service price	Monthly deposit for services, water, and heating: CZK 2,910 for one person. Electricity is billed separately.
PENB	G
Reference number	41128
Available from	Immediately

This contemporary attic apartment on the third floor of a well-maintained renovated building with no elevator is centrally located just moments from the Vltava riverbank, the Žofín Palace, and the National Theater, with full amenities within immediate reach, a few steps from the Národní třída metro station and park on Charles Square, and within walking distance of Wenceslas Square.

The apartment includes a living room with a fully fitted open plan kitchen, a bedroom, a shower room, plus a separate toilet with a bidet shower.

Vinyl floors, tiles, security entry door, gas heating, dishwasher, induction cooktop, exterior and interior blinds.



* Area of the unit according to the Civil Code. The area consists of the sum total area of the entire unit bounded by perimeter walls.