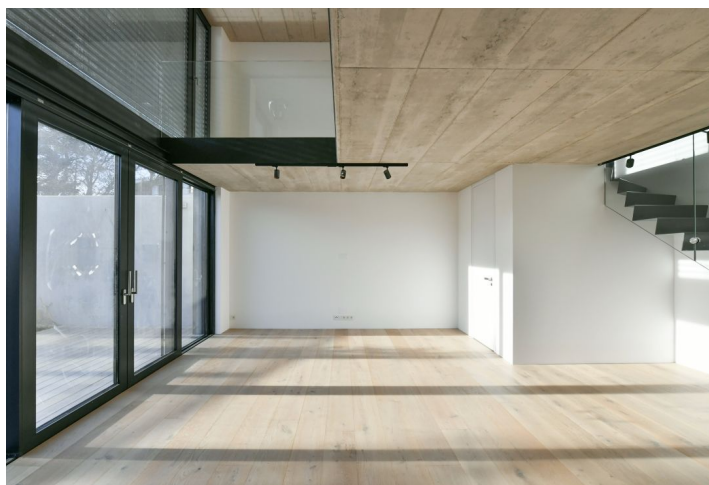




## House Five-bedroom (6+kk)

Rented

168 m<sup>2</sup>, Praha-západ, Průhonice, Narcisová





## House Five-bedroom (6+kk)

**Rented**168 m<sup>2</sup>, Praha-západ, Průhonice, Narcisová

Total area	168 m <sup>2</sup>
Plot	310 m <sup>2</sup>
Foot print	66 m <sup>2</sup>
Garden	245 m <sup>2</sup>
Floor area	152 m <sup>2</sup>
Terrace	16 m <sup>2</sup>
Parking	Parking on the plot.
Cellar	Yes
PENB	G
Reference number	41130
Available from	Immediately

This brand new 4-bedroom 2-bathroom semidetached house with a landscaped garden is situated on the edge of the village of Průhonice just a few min. drive from Prague and close to shopping, entertainment and large parks. There is a supermarket, a large shopping area, a waterpark, and a family park just a short drive away. Within walking distance, there is a village center with rich amenities. A prestigious international school in Osnice is a 10-minute drive away. The Průhonice Park (UNESCO World Heritage) and Dendrological Garden are perfect for nature walks. The village has a very quick connection to the D1 highway (a trip to Prague takes 4 minutes).

The ground floor offers a living room with a fully fitted open plan kitchen and access to the **terrace** and **garden**, a utility / laundry room, a toilet, and an entrance hall with built-in wardrobes. The first floor includes an open gallery with built-in wardrobes, and a master bedroom with a bathroom (bathtub, toilet). The second floor features three bedrooms, a bathroom (walk-in shower), and a separate toilet.

**Hardwood** floors, **travertine** tiling in the bathroom, underfloor heating throughout, automatic exterior blinds, heat pump, dishwasher, induction cooktop, microwave oven, American type fridge, video entry phone, **storage** space in the garden. Parking for two to three cars on the plot.

