

**Retail space****Rented**

Prague 1, Nové Město, Havlíčkova

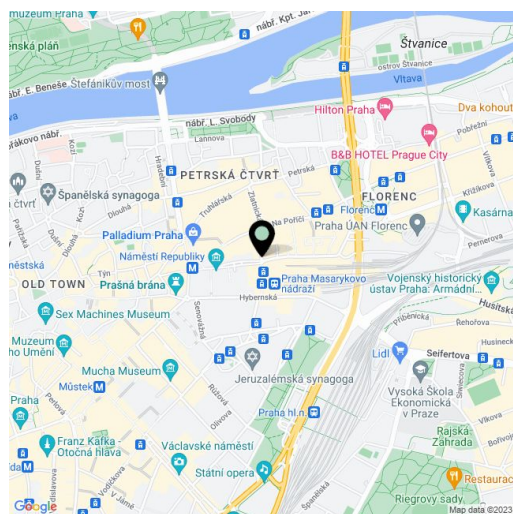
Service price	95 CZK monthly per m ²
Available area	245 m ²
Parking	EUR 200 / pp / month
PENB	G
Reference number	41253

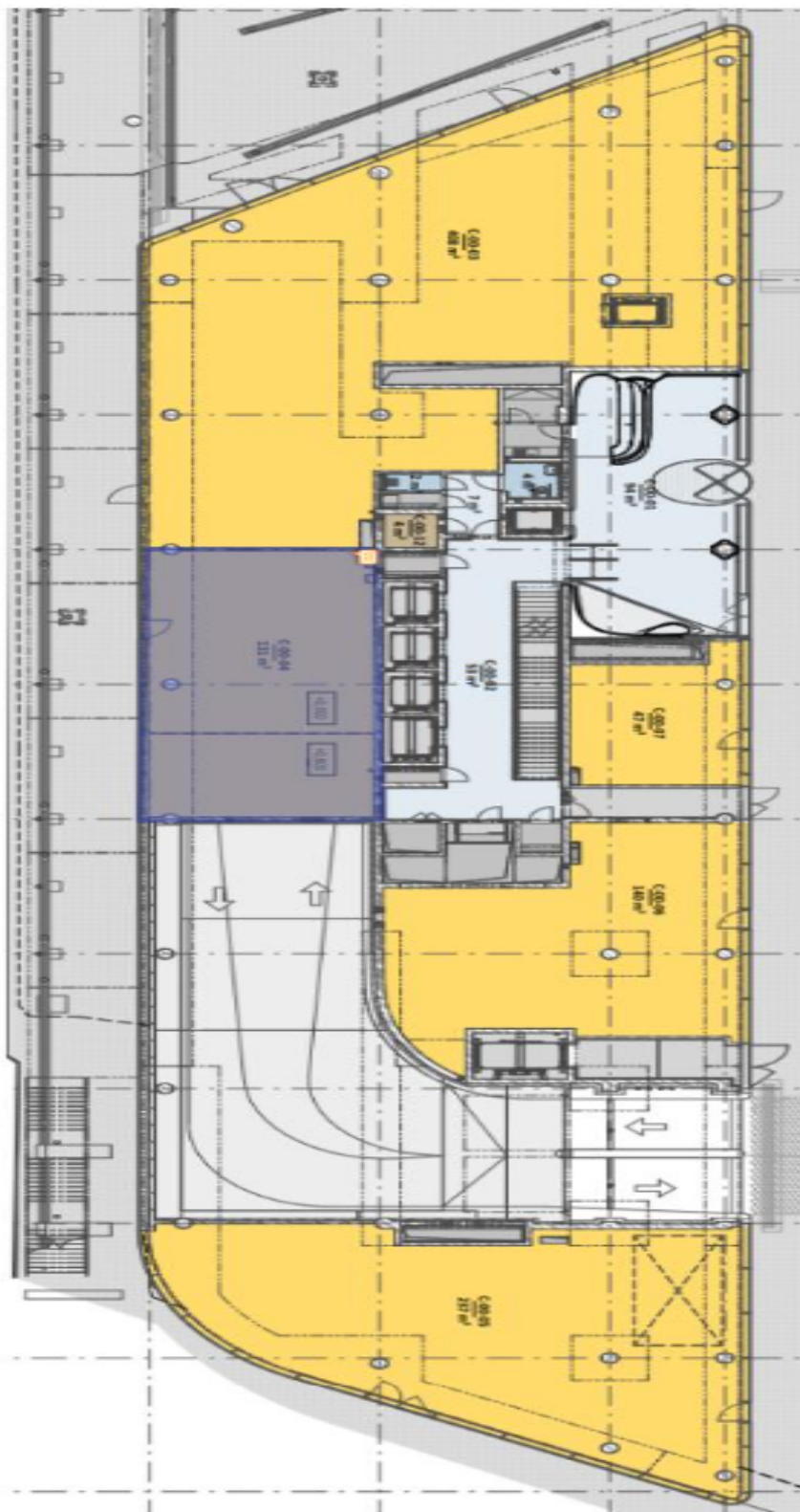
Retail space for lease on the 1st floor of a project designed by Zaha Hadid Architects. The studio's intention was to respect the history of the area and thus to create a unique architectural work that will become part of the modern appearance of the city of Prague. The project meets the strictest criteria of LEED certification.

Location:

The project is located directly at the Masaryk Railway Station, the Náměstí Republiky tram stop, and the Náměstí Republiky metro station (line B).

Rental and service charges listed without VAT. Lessee pays no commission.





1.NP