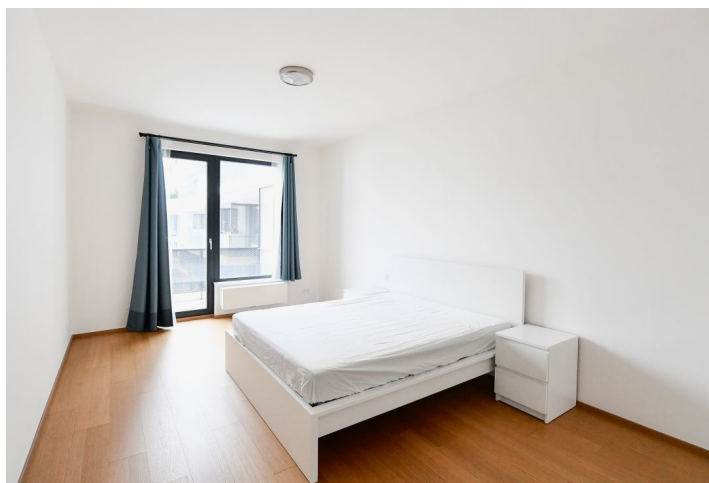
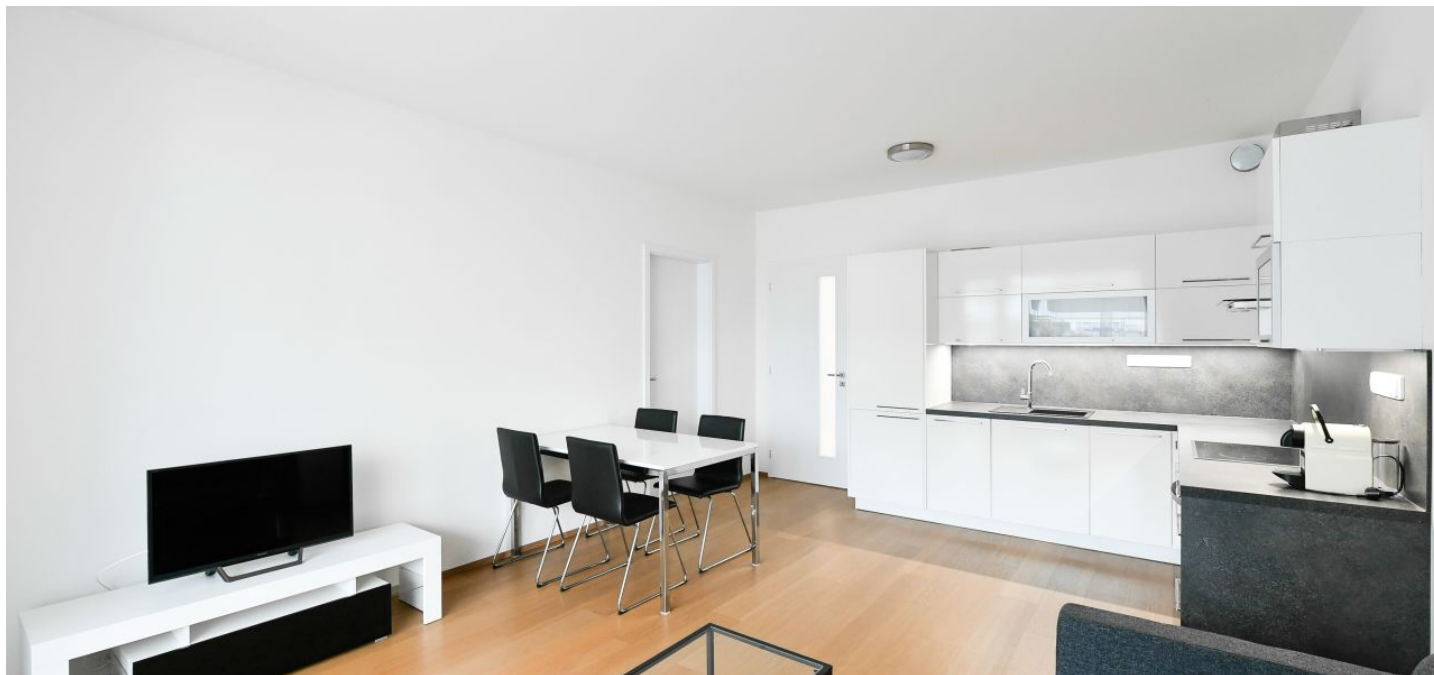




## Apartment One-bedroom (2+kk)

Rented

57 m<sup>2</sup>, Prague 5, Jinonice, Kloudova





## Apartment One-bedroom (2+kk)

Rented

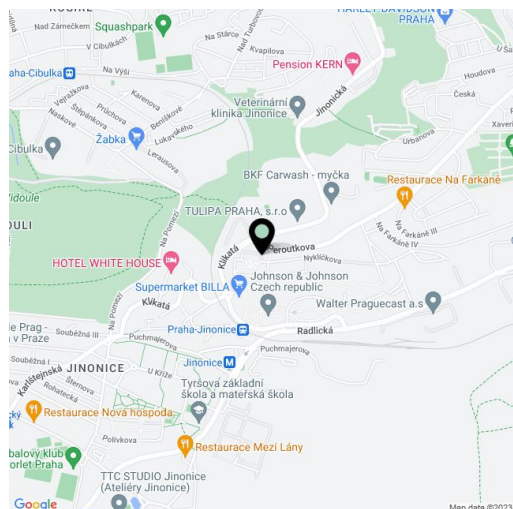
57 m<sup>2</sup>, Prague 5, Jinonice, Kloudova

Total area	70 m <sup>2</sup>
Floor area*	57 m <sup>2</sup>
Terrace	13 m <sup>2</sup>
Parking	Garage parking.
Garage	Yes
Cellar	-
PENB	A
Reference number	41257
Available from	Immediately

This is a contemporary 1-bedroom apartment in the Waltrovka project. Benefiting from a 13 m<sup>2</sup> terrace, this furnished apartment is situated on the second floor in a recently built multi purpose residential project with underground parking and a variety of shops, services and restaurants. The project won the 2018 Real Estate Project of the Year award. It is located in a quiet green neighborhood with quick access to the city center, just a few min. walk from the Jinonice metro station. Conveniently located for the French and German international schools and the Anděl business district, within easy reach of green parks and multiple sports facilities including a golf course.

The apartment features a living room with a dining area and a fully fitted open plan kitchen, a bedroom, a bathroom including a bathtub and a toilet, and an entrance hall with a wardrobe. The **terrace** is accessible from both main rooms.

**Hardwood floors**, tiles, security entry door, French windows, central heating, washing machine, dishwasher, basic kitchenware, TV. A **garage parking** space is included. Deposit for service charges, water and heating: CZK 3,300 /month. Electricity is billed separately.



\* Area of the unit according to the Civil Code. The area consists of the sum total area of the entire unit bounded by perimeter walls.



# Apartment One-bedroom (2+kk)

57 m<sup>2</sup>, Prague 5, Jinonice, Kloudova

Rented

01	CHODBA	7,7 m <sup>2</sup>
02	OBÝVAČÍ POKOJ + KK	23,1 m <sup>2</sup>
03	POKOJ	19,6 m <sup>2</sup>
04	KOUPELNA + WC	6,7 m <sup>2</sup>
<b>UŽITNÁ PLOCHA BYTU</b>		<b>57,1 m<sup>2</sup></b>
PODLAHOVÁ PLOCHA BYTU		60,6 m <sup>2</sup>
05	BALKÓN	12,8 m <sup>2</sup>

**2+KK | 57,1 M<sup>2</sup>**

REZIDENCE WALTROYKA  
LIVING BY PENTA



Poznámka: Plochy jednotlivých místností jsou pouze orientační. Vyznažené zařízení v plánech (nábytek, kuch. linka, el. spotřebiče, atd.) nejsou součástí dodávky. Přesné parametry jsou specifikovány ve smlouvě. Developer si vyhradil právo na drobné úpravy.

PENTA