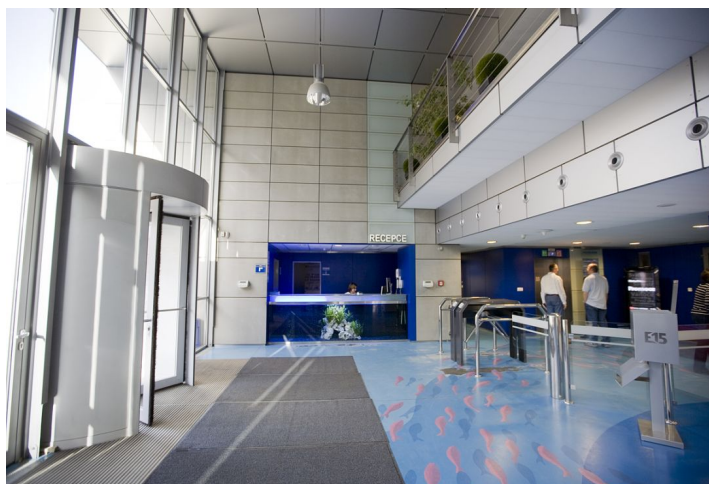




Retail space

Prague 4, Nusle, Doudlebská

Rented



**Retail space**

Prague 4, Nusle, Doudlebská

Rented

Service price	125 CZK monthly per m ²
Available area	149 m ²
Parking	EUR 110 / ps / month
PENB	G
Reference number	41277

Retail space for lease on the ground floor of a modern building located within highly developed business district of Prague 4 – Nusle.

Location:

The building with great visibility provides perfect accessibility to the Pankrác metro station (line C) and bus station. This location is easily accessible by car as well (right on North-South Highway exit). Within short walking distance is situated Arcade Pankrác shopping center and other services such as restaurants, hotels, conference centers, banks, post office, school and sports.

Rental and service charges listed without VAT. Lessee pays no commission.

