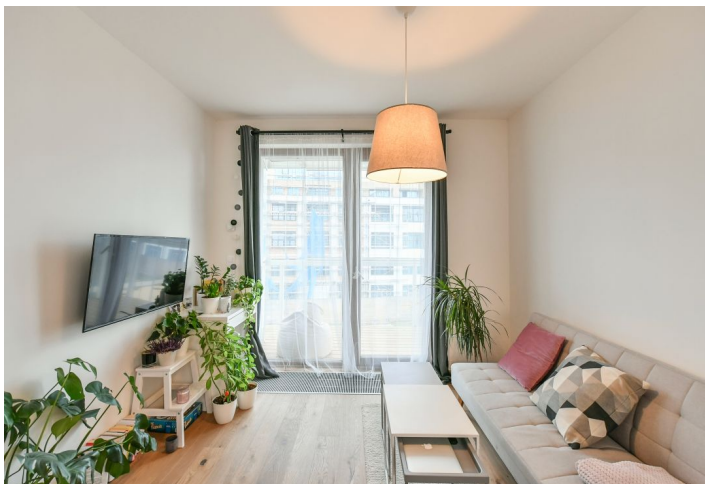




Apartment Studio (1+kk)

Rented

33 m², Prague 5, Košíře, Naskové





Apartment Studio (1+kk)

Rented

33 m², Prague 5, Košíře, Naskové

Total area	37 m ²
Floor area	33 m ²
Balcony	4 m ²
Parking	-
Cellar	Yes
PENB	B
Reference number	41353

Boasting a wonderful green location, this is a contemporary furnished studio apartment with a balcony, on the 3rd floor in a recently built residential project with a landscaped courtyard with water features and a playground. Located on the very edge of the Vidoule natural preserve, near the Cibulka forest park, in a quiet residential area within easy reach of full amenities and services, close to Jinonice metro station, and within quick reach of the Anděl / Nový Smíchov commercial center. Conveniently located for the German School.

The interior includes a living room with a fully fitted open plan kitchen, a breakfast bar and access to a glassed in **balcony** facing the courtyard, a bedroom zone separated by a partition, a shower room with a toilet, and an open entrance hall with large built-in wardrobes.

Kährs oak floors, tiles, wooden floor on the balcony, French windows, automatic exterior blinds, washer / dryer, Hanák kitchen, induction cooktop, sofas, smart TV, **cellar**, security cameras in the building. Monthly deposit for service charges, water and heating: CZK 2,400. Electricity is billed separately (transfer to the tenant). Available from February 1, 2022.

