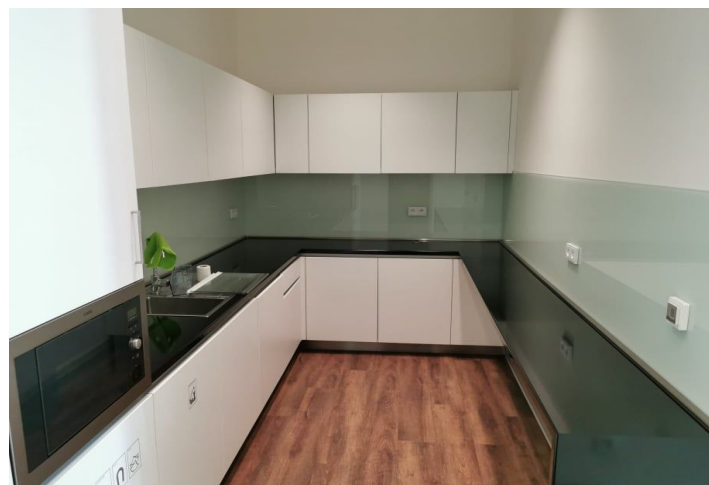
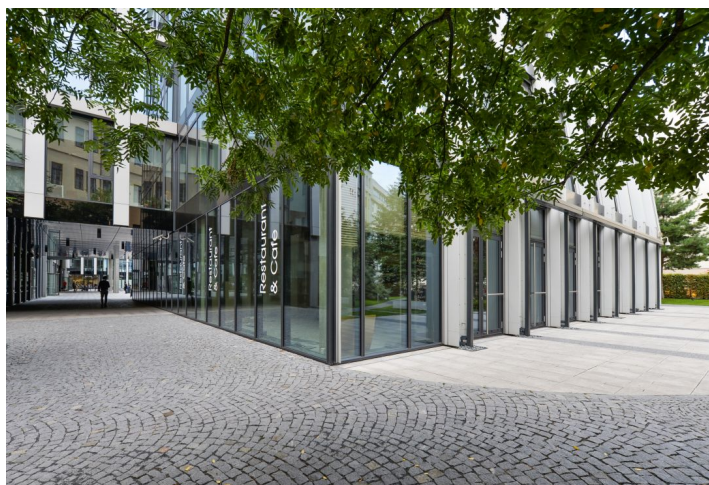
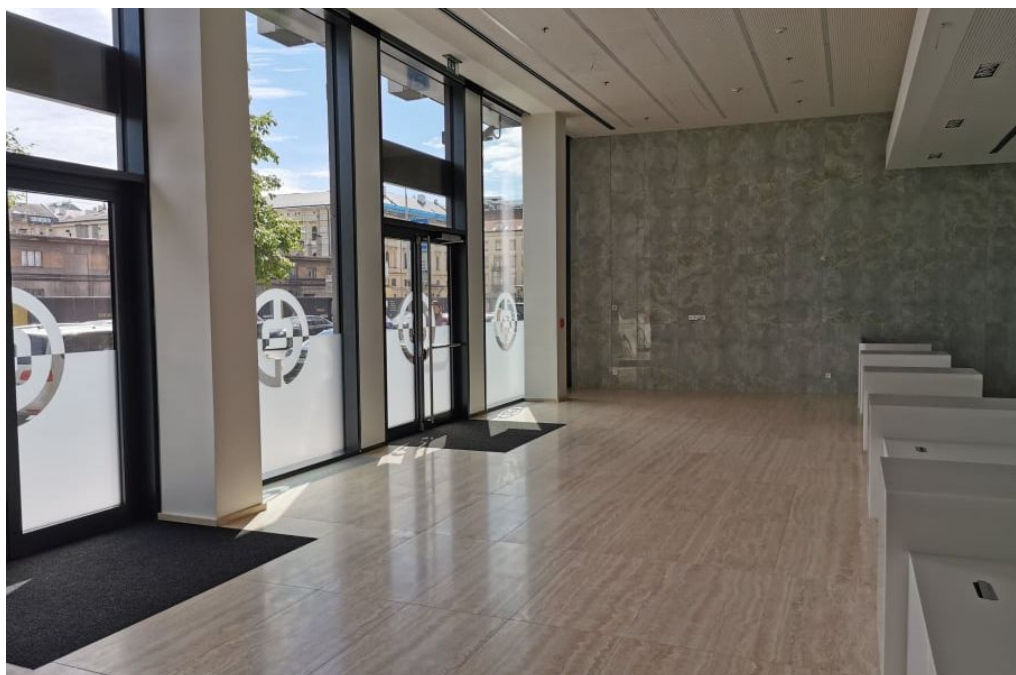




Retail space

Prague 1, Nové Město, Na Florenci

Rented



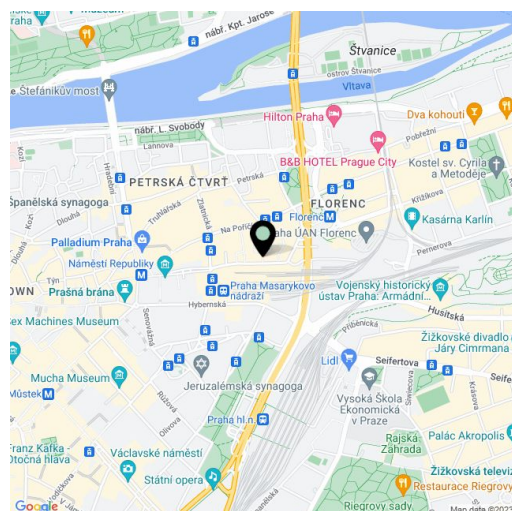


Retail space

Rented

Prague 1, Nové Město, Na Florenci

Service price	95 CZK monthly per m ²
Available area	249 m ²
Parking	Yes
PENB	G
Reference number	41378



Retail space for lease in the attractive mixed-use office and retail complex. The complex is located in the center of Prague and consists of several buildings that are connected together through organically shaped ribbed towers. Within the complex is the Desfour Garden, a public square with greenery. The space is suitable for a furniture store, electro shop, luxury goods or a bank.

Location:

Excellent accessibility by public transport. It is located within a two-minute walk from the Náměstí Republiky (line B) and Florenc (line C) metro stations, the Náměstí Republiky/Bílá labuť tram stops, and the Masarykovo Railway Station..

Features and services:

- Central ventilation system
- Openable windows
- Warehouse space
- Ceiling height: 3 m
- Raised floors and lowered ceilings
- Fire protection
- Air-conditioned
- Cooling and heat convectors
- Wheelchair accessible building
- Security cameras
- Electronic security system
- Electronic fire prevention system
- Electricity generators (power source from two independent substations)
- Fiber optic cable from several operators

Rental and service charges listed without VAT. Lessee pays no commission.

