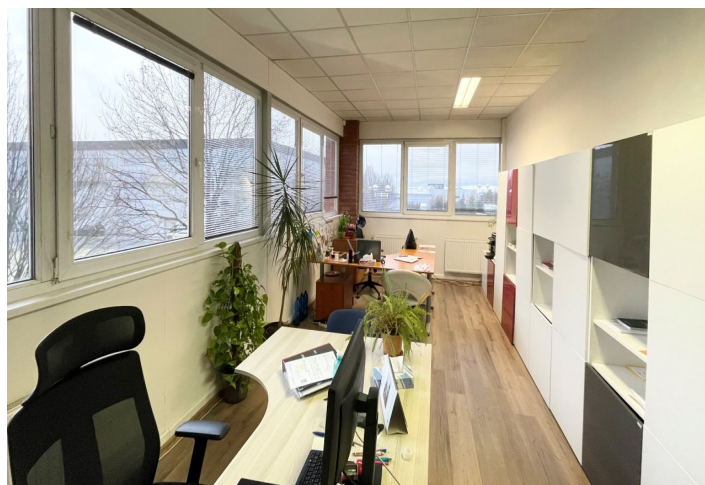




## Warehouse space

786 m<sup>2</sup>, Praha-východ, Čestlice, Obchodní

Ask for price





## Warehouse space

786 m<sup>2</sup>, Praha-východ, Čestlice, Obchodní

**Ask for price**

<b>Total area</b>	786 m <sup>2</sup>
<b>Available area for rent</b>	786 m <sup>2</sup>
<b>Office area</b>	320 m <sup>2</sup>
<b>Min. area</b>	786 m <sup>2</sup>
<b>Ceiling height</b>	7 m
<b>Floor loading capacity</b>	5 t/m <sup>2</sup>
<b>Column grid structure</b>	—
<b>Structure</b>	Reinforced concrete structure
<b>PENB</b>	C
<b>Reference number</b>	41401

Warehouse/showroom and office space for lease in the largest retail park in the Czech Republic, situated close to Prague. The premises consists of a **warehouse/showroom space (325 sq.m./141 sq.m.)** and **offices (320 sq.m.)**.

### Location:

The Průhonice-Čestlice retail park is located just outside the Prague city border on the D1 highway (Prague – Brno), between exit 6 and 8.

### Features and Services:

- Property management
- Park maintenance
- 24 hours security, physical and electronic security
- Electric fire alarm
- 10 individual car parking places
- number of restaurants and shops in the vicinity

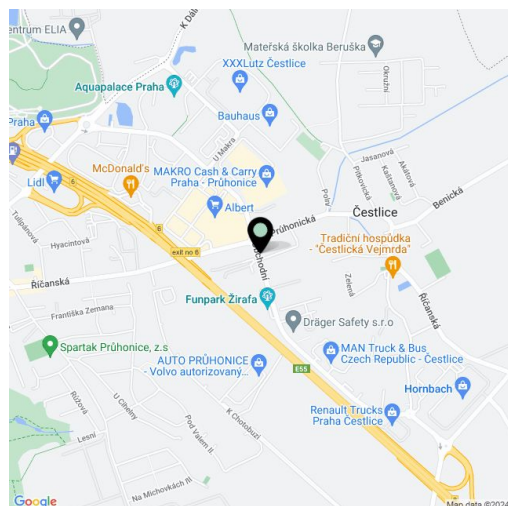
### Warehouse/Retail premises:

- flexible space
- 1 loading door for trucks
- Clear height 7m
- Polished concrete floor 5t/m<sup>2</sup>
- Utility connections (water, sewage, gas, electricity)

### Office:

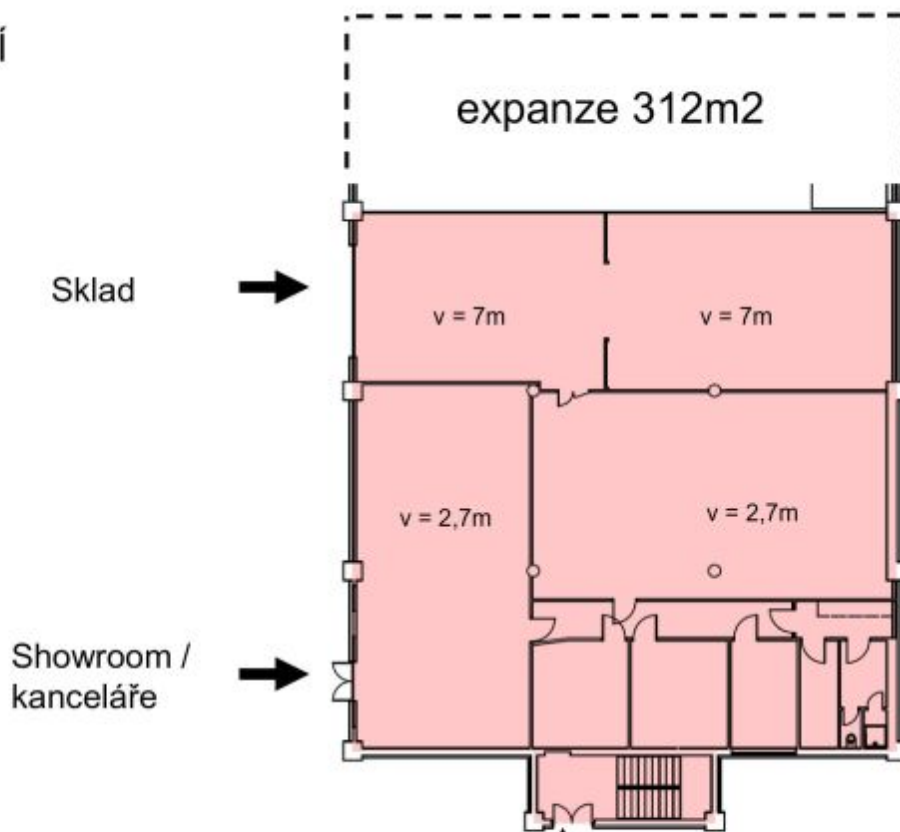
- Air-conditioning
- Openable windows

Rental and service charges are listed without VAT. Lessee pays no commission.

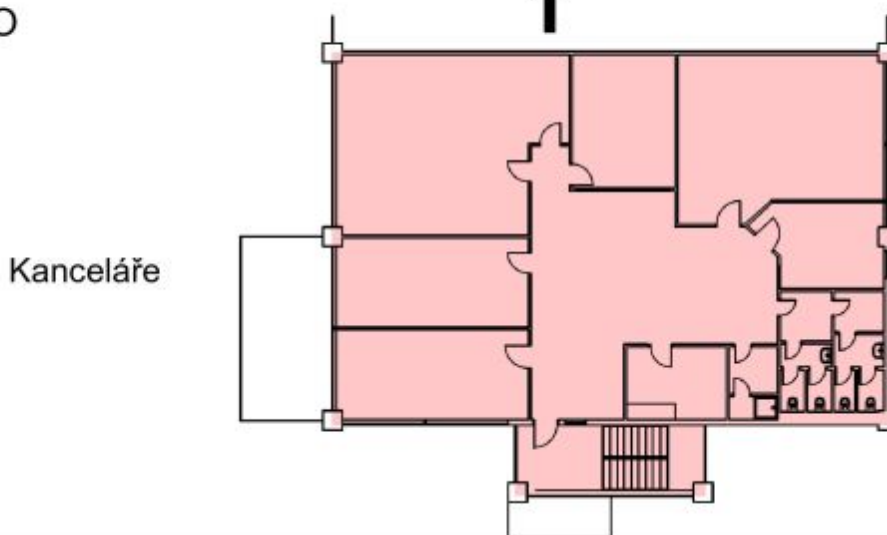




PŘÍZEMÍ



1. PATRO





## Warehouse space

786 m<sup>2</sup>, Praha-východ, Čestlice, Obchodní

Ask for price



1.NP



2.NP