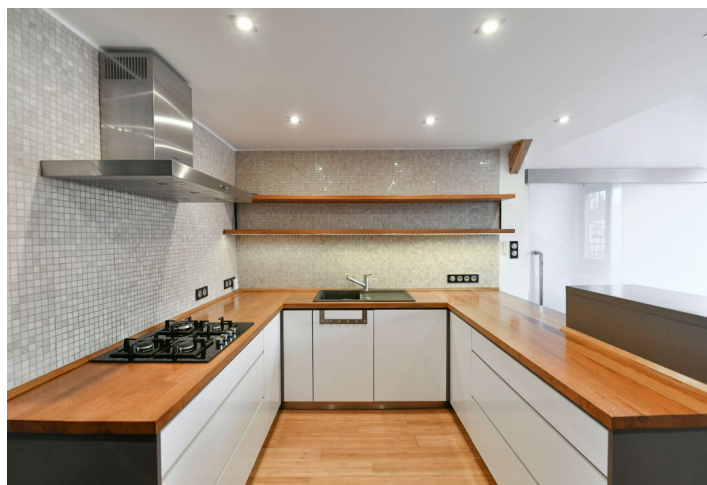
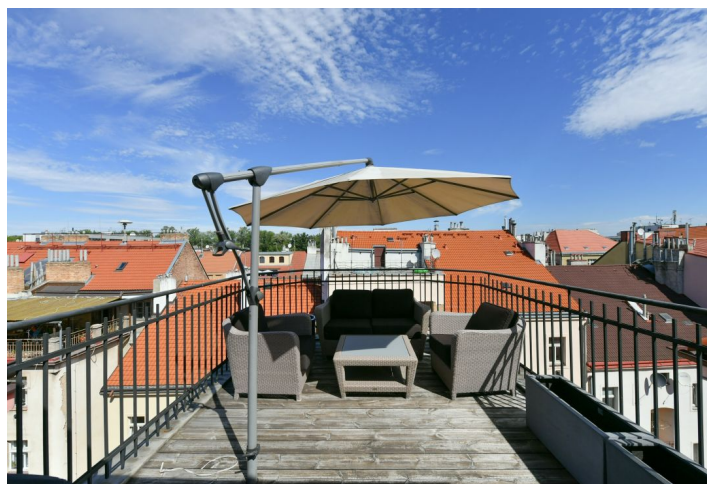
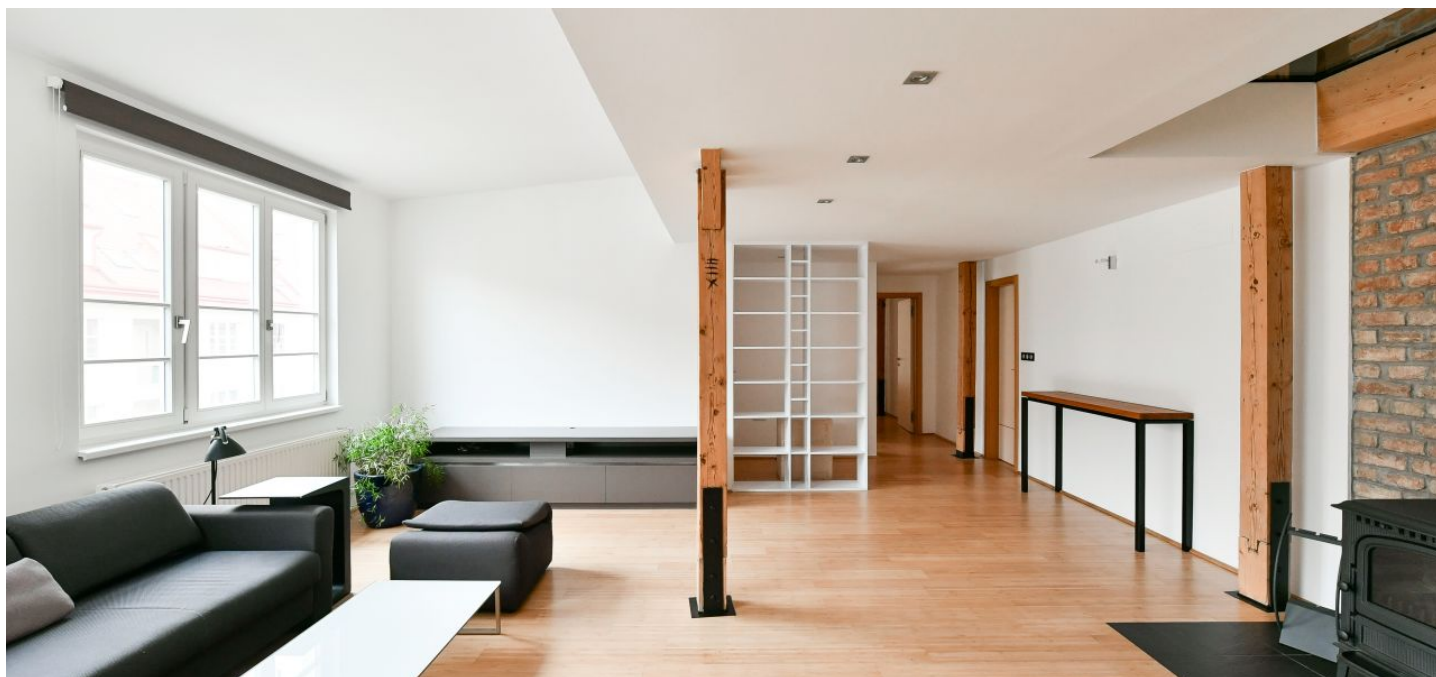




Apartment Three-bedroom (4+1)

Rented

212 m², Prague 3, Žižkov, Roháčova





Apartment Three-bedroom (4+1)

Rented

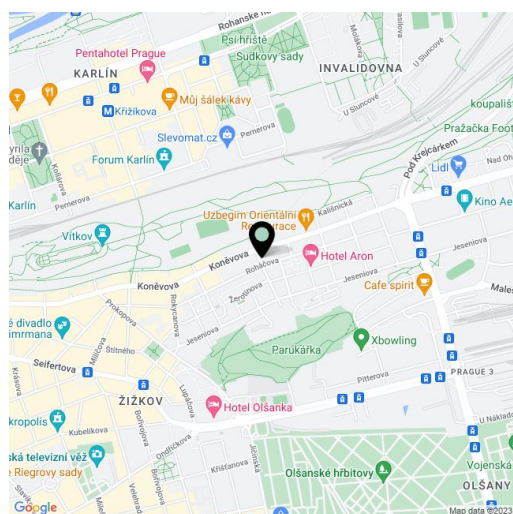
212 m², Prague 3, Žižkov, Roháčova

Total area	231 m ²
Floor area*	212 m ²
Balcony	3 m ²
Terrace	16 m ²
Parking	-
Cellar	Yes
Service price	Monthly deposit for service charges and water: CZK 2,500. Gas and electricity are billed separately.
PENB	G
Reference number	41433
Available from	Immediately

Design apartment with a terrace and a balcony. This semi furnished 3-bedroom 2-bathroom split-level attic apartment is on the 6th floor of a well kept renovated residential building with a lift. Situated in a quiet tree lined street in Žižkov, Prague 3, near the popular Parukářka and Vrch Vítkov Parks, and the Pražačka sports grounds, with quick access to the city center and full amenities. Location with multiple bus and tram connections, a few tram stops from Želivského metro station and Flora shopping mall. The popular Aero Art Cinema is just a few blocks from the building.

The lower floor of the apartment features a fully fitted eat-in kitchen with a **balcony** facing the courtyard, a living room with a working **slow burning stove**, and two bedrooms with built-in wardrobes. There is a bathroom including a bathtub and a toilet, a storage room, and an entrance hall with built-in storage space. The upper level offers a spacious **gallery** with a study and a kitchenette, access to the **terrace** facing the green courtyard, a bedroom with a study area, and a shower room with a toilet.

Custom made built-in storage, **hardwood bamboo floors**, tiles, security entry door, roller blinds, gas boiler, washer, dryer, dishwasher, microwave oven, wine fridge, alarm, wiring for air-conditioning, **cellar**.



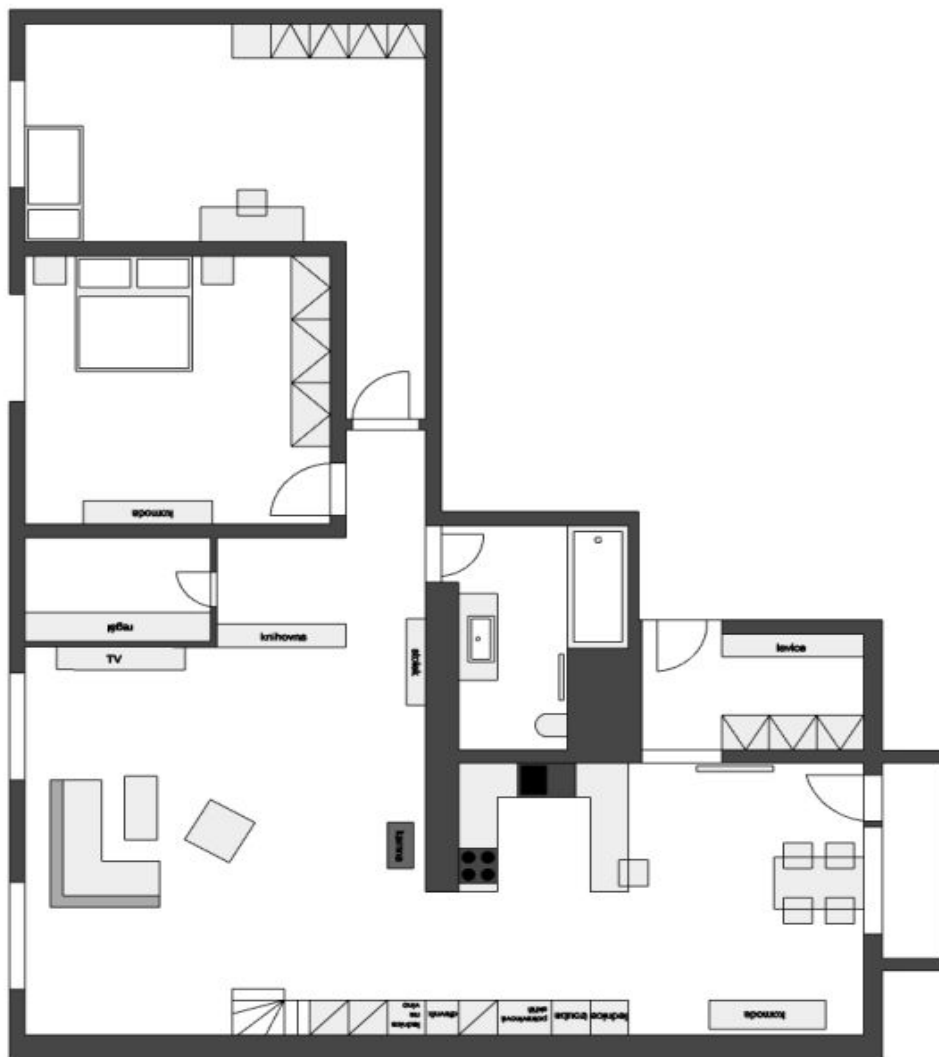
* Area of the unit according to the Civil Code. The area consists of the sum total area of the entire unit bounded by perimeter walls.



Apartment Three-bedroom (4+1)

212 m², Prague 3, Žižkov, Roháčova

Rented





Apartment Three-bedroom (4+1)

212 m², Prague 3, Žižkov, Roháčova

Rented

