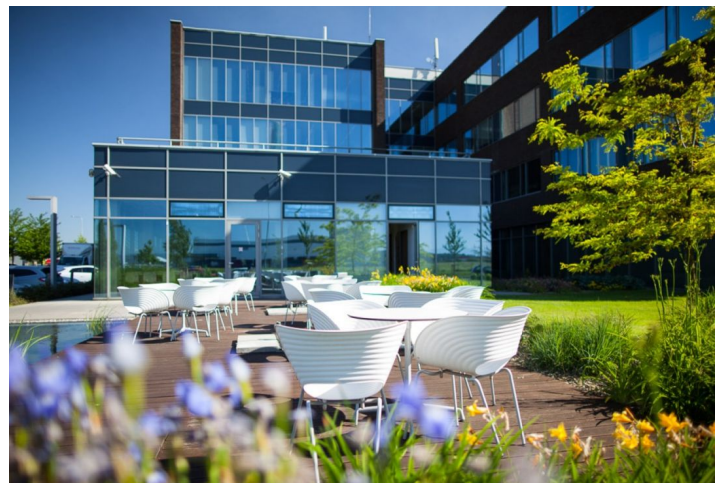
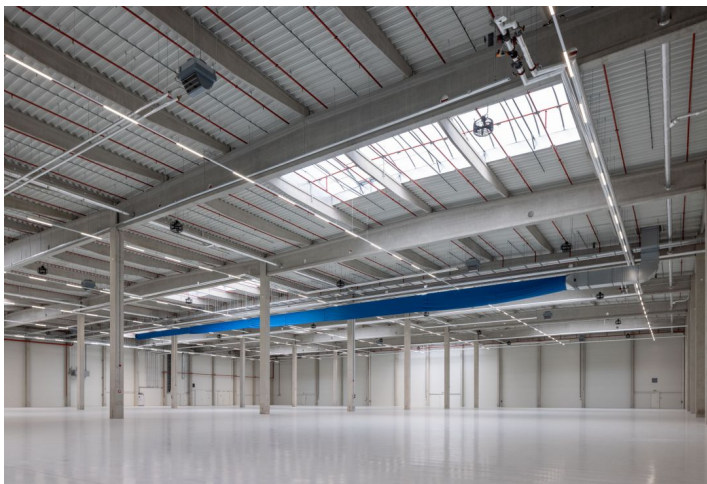




Industrial space

910 m², Ostrava, Ostrava-Hrabová, Na Rovince

Ask for price





Industrial space

910 m², Ostrava, Ostrava-Hrabová, Na Rovince

Ask for price

Total area	910 m ²
Ceiling height	10.5 m
Floor loading capacity	5 t/m ²
Column grid structure	—
Structure	Reinforced concrete structure
PENB	G
Reference number	41467

743 sq.m. of industrial, **61 sq.m.** of office space and **106 sq.m.** of sanitary (ground and 1st floor) for lease close to Ostrava. The A class premises are suitable for industrial centers and light manufacturing, offer a high standard of equipment, and can be designed based on specific requests and requirements.

Location:

The park is located approx. 10 km from the center of Ostrava, in the vicinity of the D1 and D56 highways. The park is approx. 20 minutes from an international airport, 20 minutes from the border with Poland and 60 minutes from the border with Slovakia. Public transport in the area.

Features and Services:

- Onsite property management
- 24/7 security service and CCTV
- Park maintenance
- Sufficient parking space
- High standard of building

Industrial/Warehouse space:

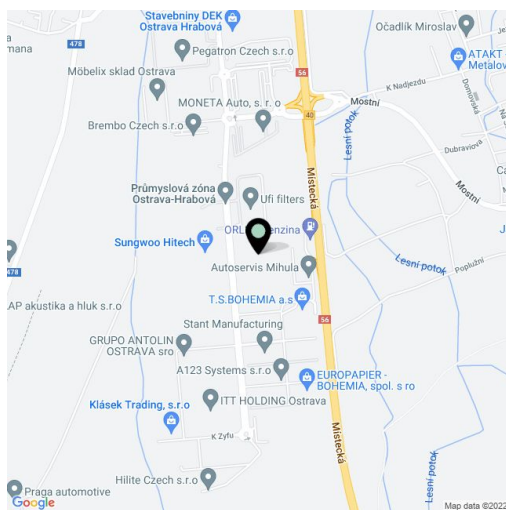
- 1 hydraulic ramp
- 1 direct entry
- Floor loading capacity 5 T/sq.m
- Clear height 10,5 m
- Column grid structure 12x24 m
- the shelving system of the existing tenant can be left
- Air conditionig in the hall
- LED Light
- Sprinkler system
- Utility connections (water, sewage, gas, electricity)

Office:

- Clear height 2,75m
- Air-conditioning
- External blinds

Available from 1st April, 2022.

Lessee pays no commission.

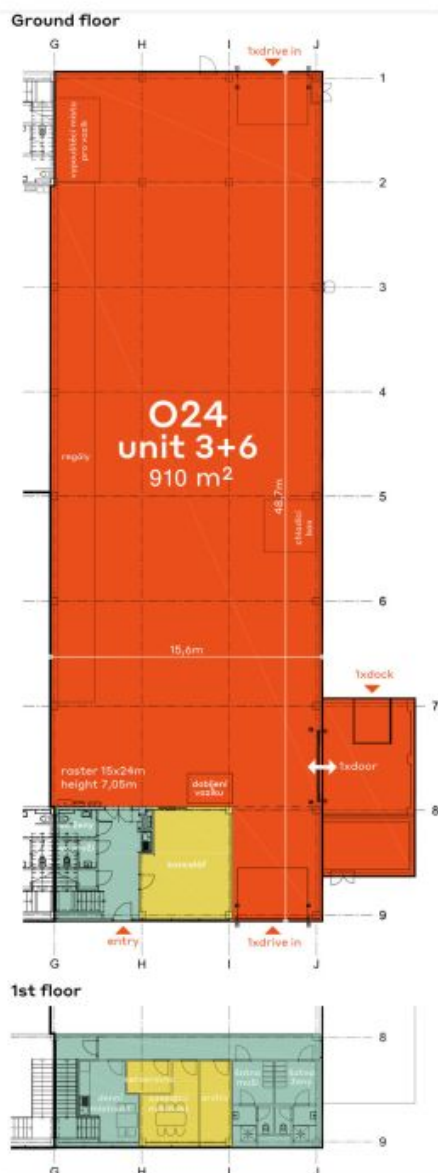




Industrial space

910 m², Ostrava, Ostrava-Hrabová, Na Rovince

Ask for price



Space breakdown O24 unit 3+6

GROUND +1ST FLOOR

Warehouse/production gnd floor	743 m ²
Office gnd+1st floor	61 m ²
Sanitary gnd+1st floor	106 m ²

Total rentable area O24 unit 3+6 910 m²

■ Warehouse / Production	■ Office/reception
■ Yard / Parking space	■ Sanitary/utilities