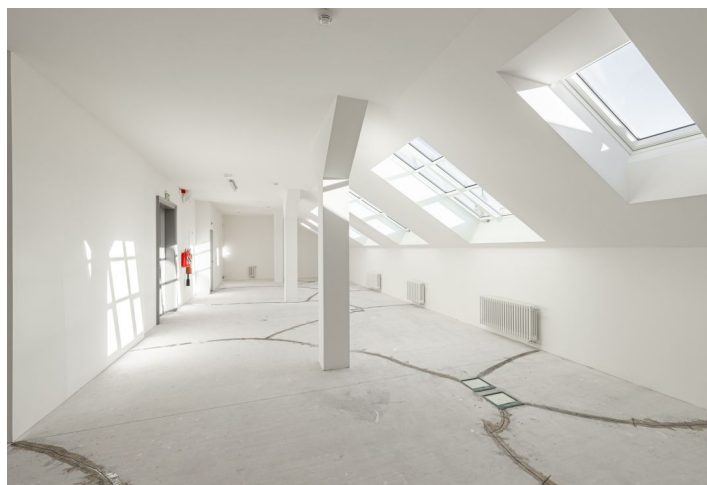
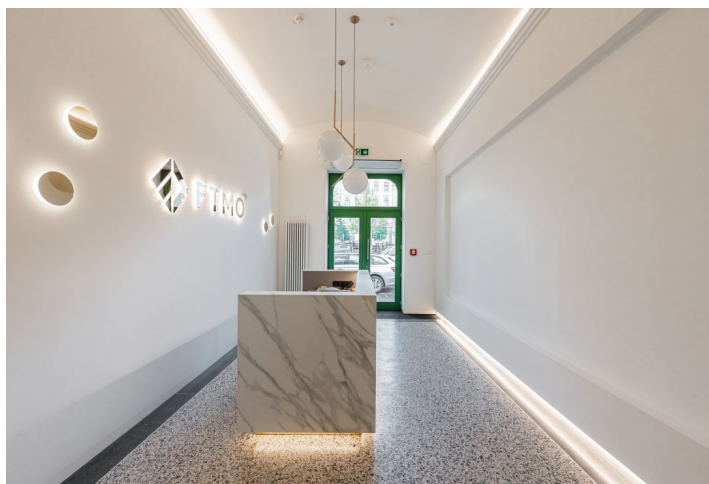




Office building

Rented

Prague 2, Nové Město, náměstí I. P. Pavlova



**Office building****Rented**

Prague 2, Nové Město, náměstí I. P. Pavlova

Service price	130 CZK monthly per m ²
Total building area	1 190 m ²
Tenant consumption	—
Parking	3 000 CZK
Parking service charges	—
Parking ratio	—
Certification	—
PENB	G
Reference number	41530

Representative office space for lease in a reconstructed building located in the centre of Prague - right on I.P. Pavlova Square. The building offers up to 1 170 sq. m of leasable area on 6 floors. On each floor there are sanitary facilities, a kitchen and a cleaning room. It also includes air conditioning and the possibility of layout of the premises. 12 parking spaces will be also available.

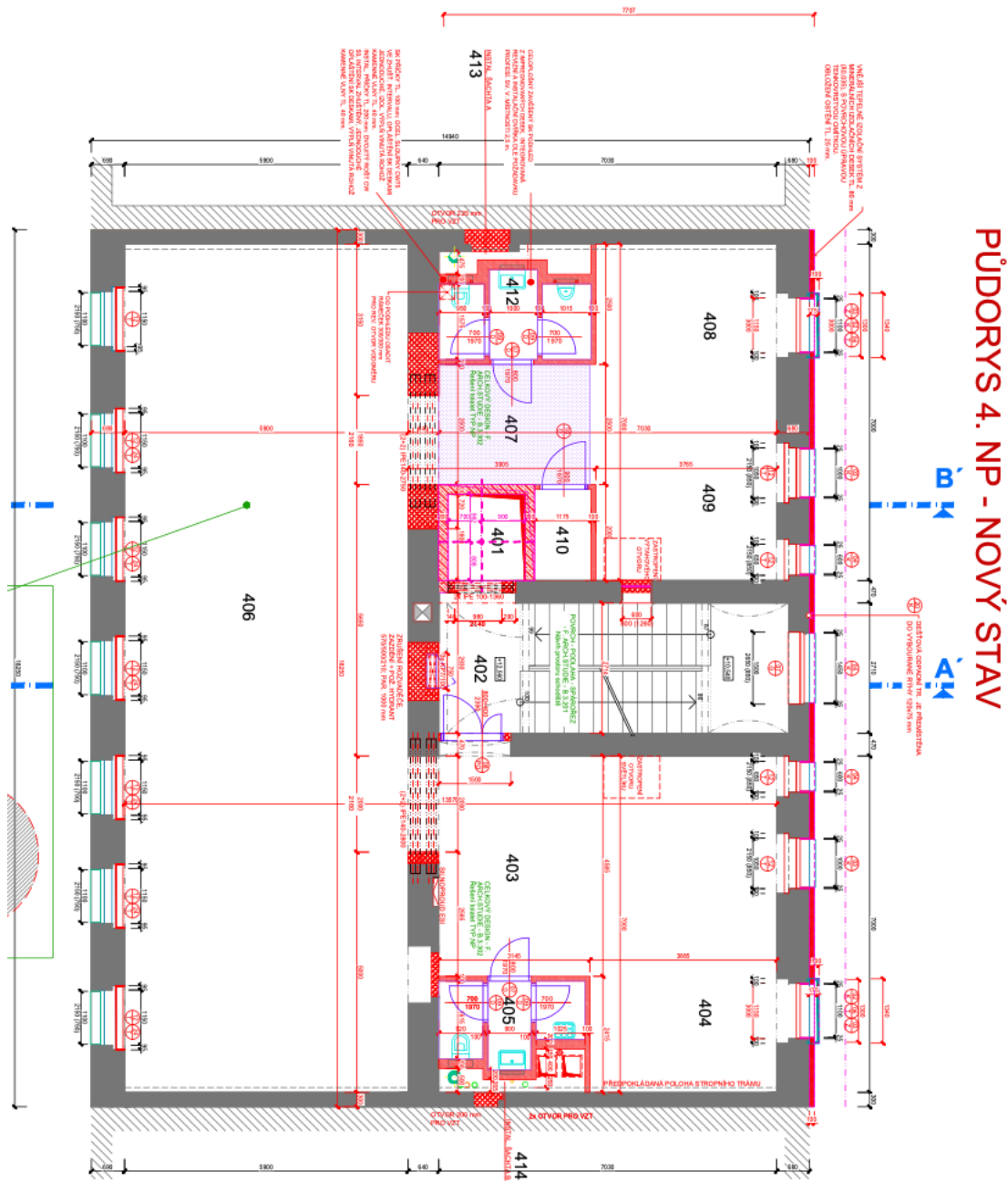
Location:

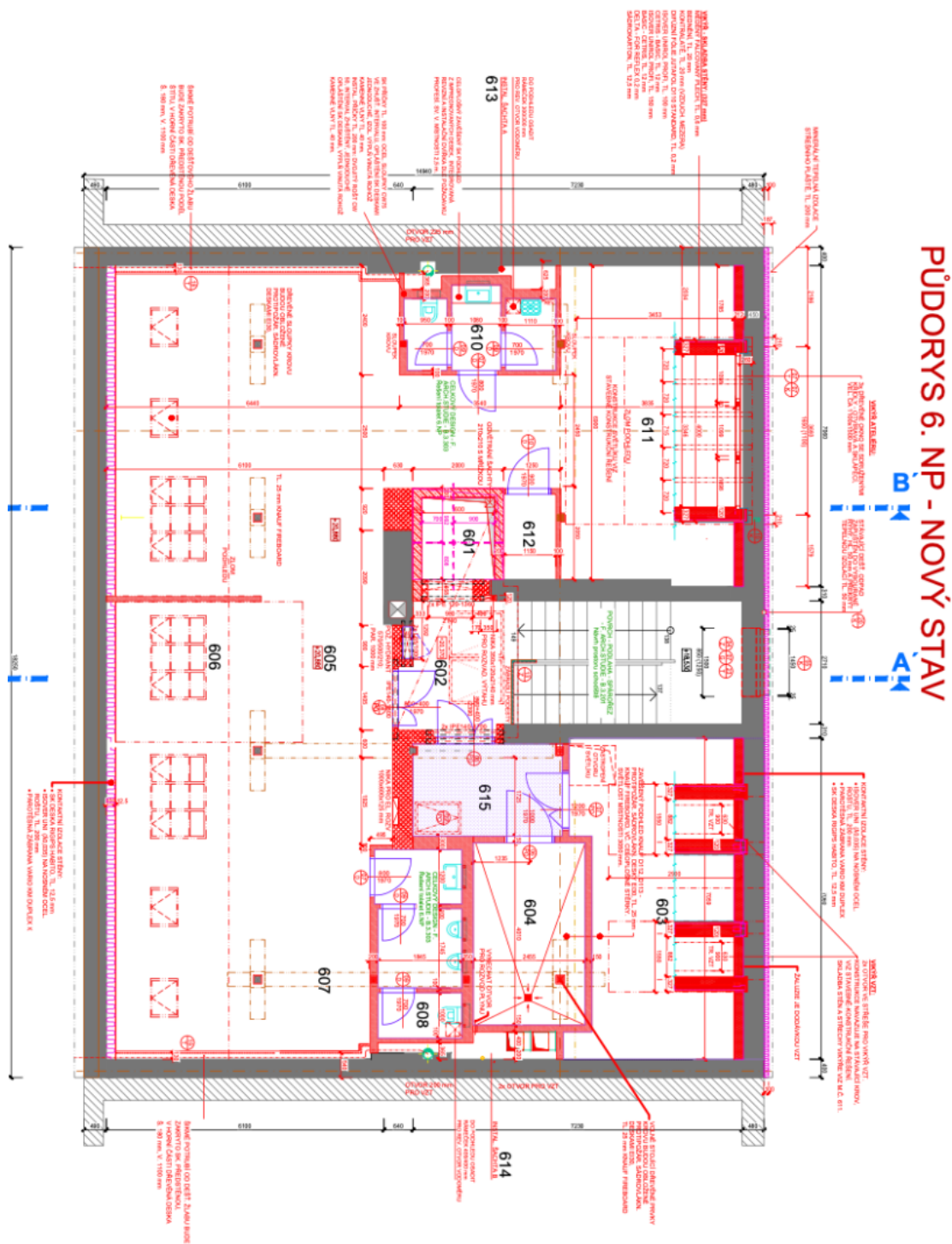
Great accessibility by car and public transport. The I.P. Pavlova tram stop and the I.P. Pavlova metro station (line C) are nearby. Wenceslas Square is 10 minutes away by metro or tram. Complete civic amenities in the vicinity.

Features and Services:

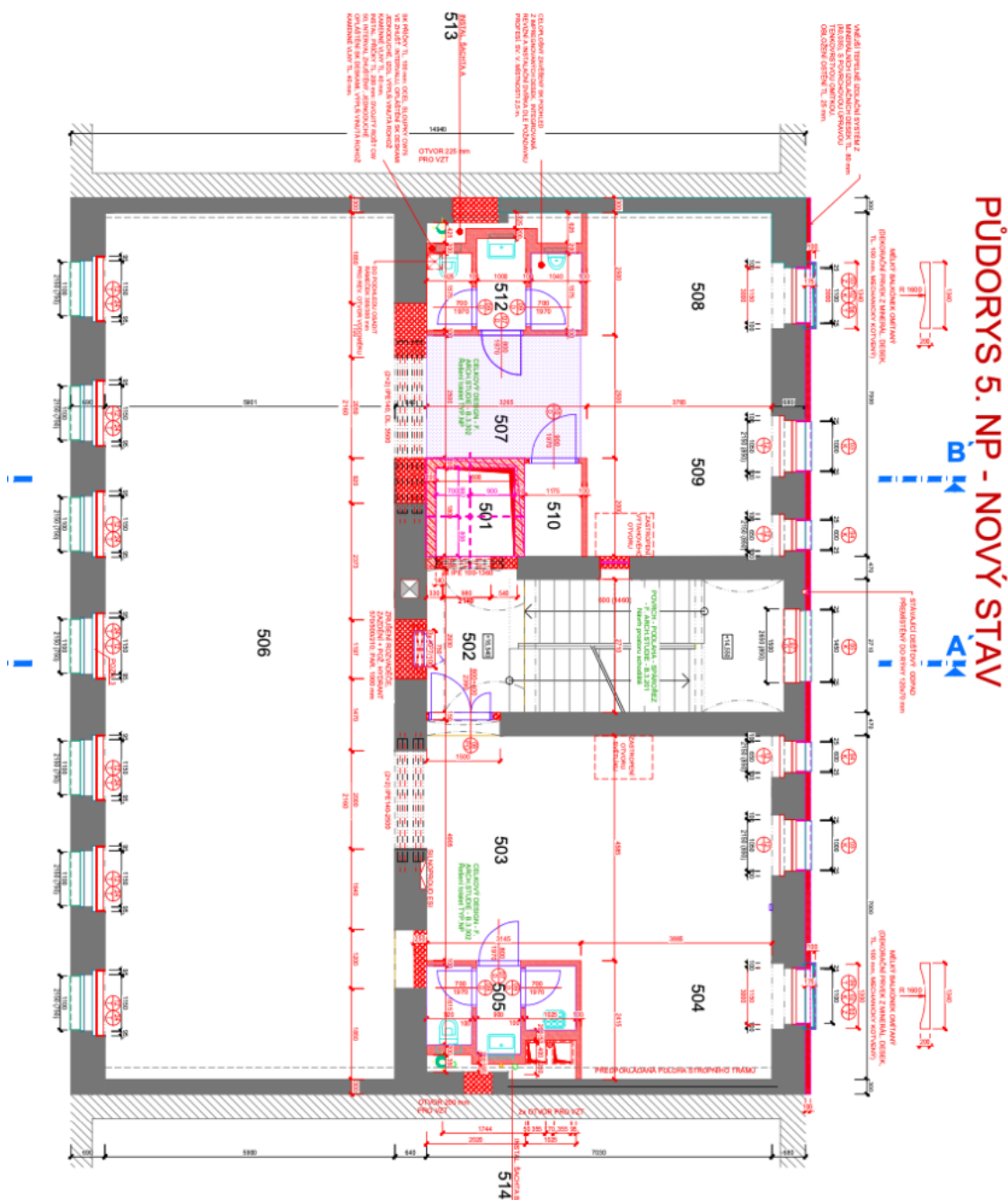
Warehouse
 Reception
 Parking in the courtyard
 12 parking spaces
 Electric charging
 Connection to PCO
 Air conditioning
 Elevator
 Possibility to customize the fitout
 Kitchenette, toilets

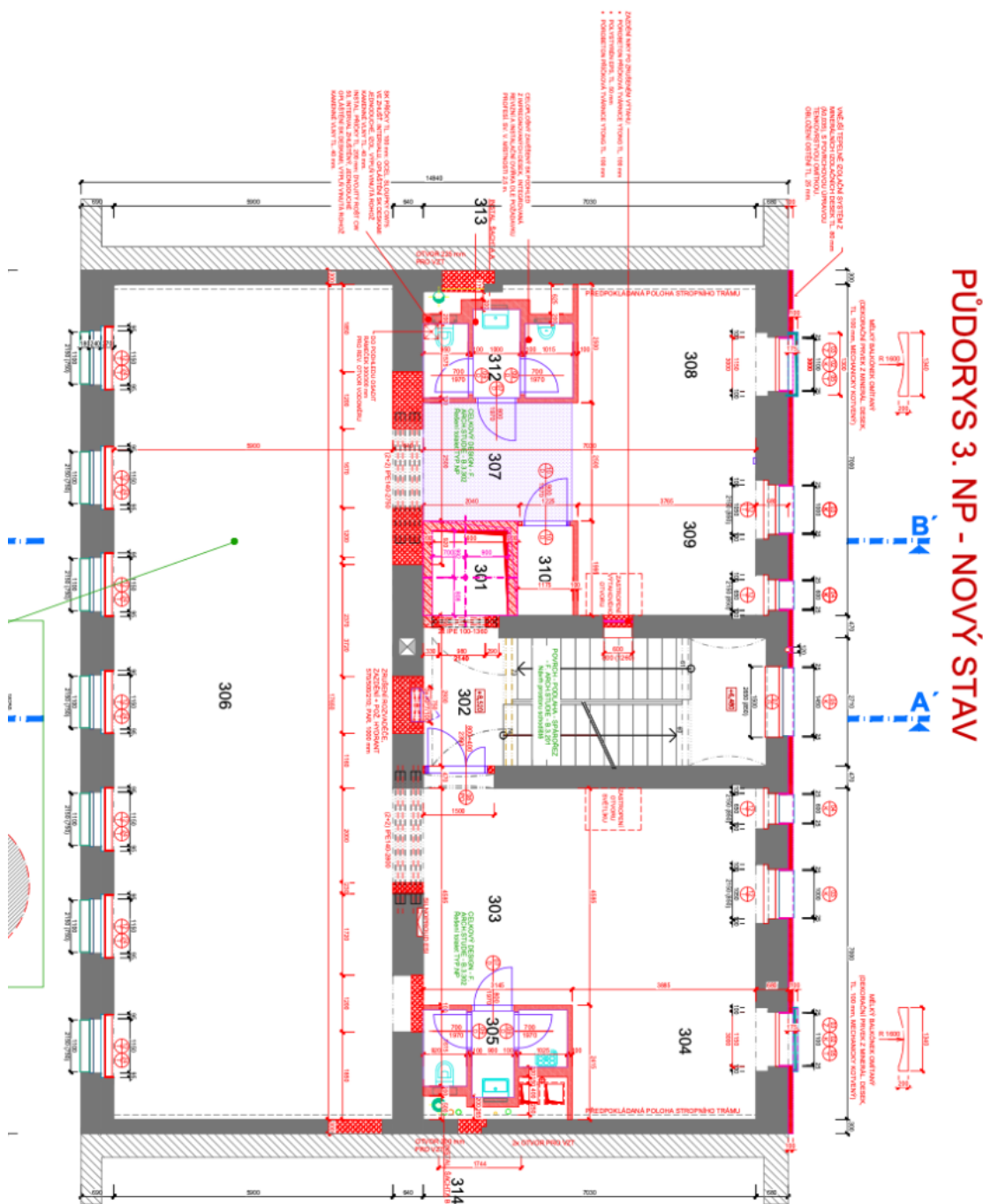
Rental and service charges listed without VAT. Lessee pays no commission.





PŮDORYS 6. NP - NOVÝ STAV





PŮDORYS 3. NP - NOVÝ STAV

