



## Industrial space

2 665 m<sup>2</sup>, Plzeň-město, Plzeň, Borská

Ask for price





## Industrial space

2 665 m<sup>2</sup>, Plzeň-město, Plzeň, Borská

**Ask for price**

<b>Total area</b>	2 665 m <sup>2</sup>
<b>Ceiling height</b>	7 m
<b>Floor loading capacity</b>	5 t/m <sup>2</sup>
<b>Column grid structure</b>	—
<b>Structure</b>	Reinforced concrete structure
<b>PENB</b>	G
<b>Reference number</b>	41538

**2 465 sq.m.** of industrial and **281 sq.m.** of office space for rent. Detached building. Reinforced concrete structure of the hall with dimensions of 72,6 x 36,6 m. Modern spaces of category A. The premises are suitable for storage, logistics or light production, they can be adapted according to the client's requirements.

### Location:

The hall is located on the western edge of Pilsen in the established Škoda Plzeň complex. Year of construction 2006. It is accessible to the external communication network of the city of Pilsen and the D5 motorway. The entrance to the hall is from the south side, where there is an access road and a handling area. Easy transport by car, bus or train (Plzeň Skvrňany stop at the park area).

### Features and Services:

- Flexible units (warehouse / office / light production / showroom)
- Property management directly on the premises
- Secure entrance to the complex (24/7)
- Electronic security alarm
- A place to charge the battery trolleys
- Technical room with HV / LV substation
- Exchanger station connected to an external hot water supply
- Space for trucks to enter the hall
- Parking places

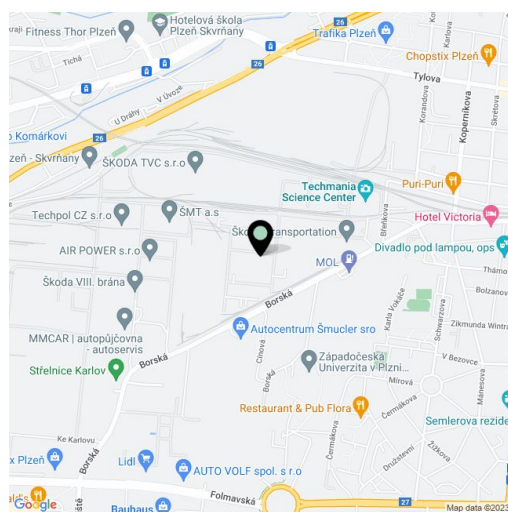
### Industrial/Warehouse space:

- Drive-in doors
- Floor loading capacity 5 t/sq.m.
- Clear height 7 m
- Column grid 18 m x 6 m
- Fluorescent and discharge lamps
- Daylight lighting of the hall is provided by skylights and the lower window strip
- Natural ventilation of the hall is performed by lower windows and skylights
- Gas hot air units

### Office:

- air conditioning is installed in the changing rooms and washrooms
- in offices it is ventilated naturally by windows
- heating with plate radiators

**Available in Q2-Q3 2023.**



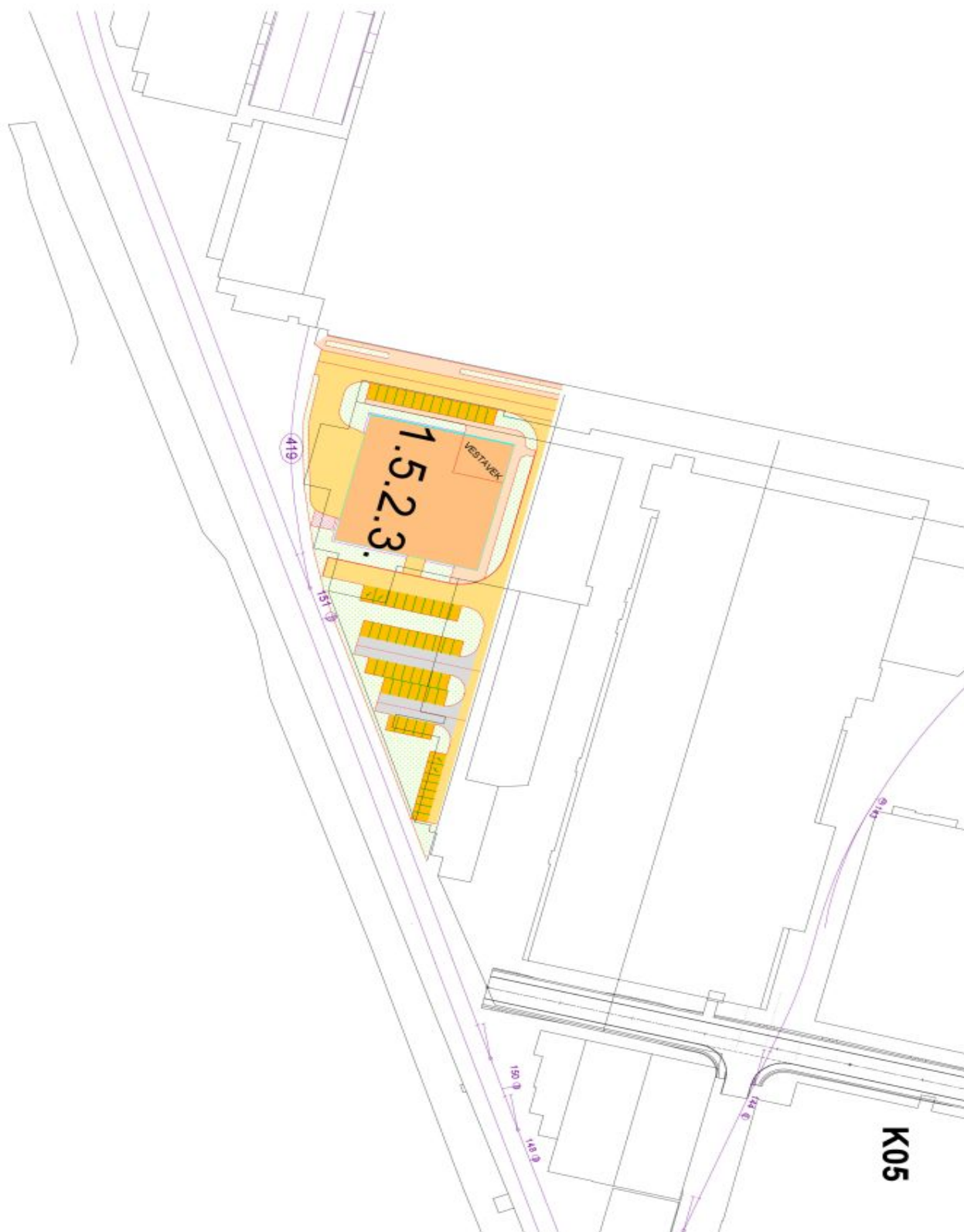


## Industrial space

2 665 m<sup>2</sup>, Plzeň-město, Plzeň, Borská

Ask for price

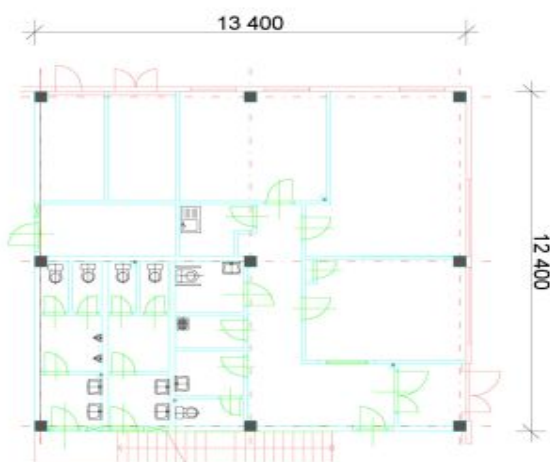
PDF vytvořeno zkušební verzí pdfFactory [www.fineprint.cz](http://www.fineprint.cz)



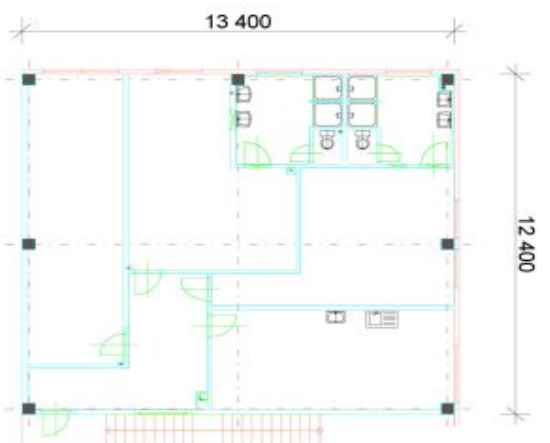


VESTAVEK NH 1.5.2.3

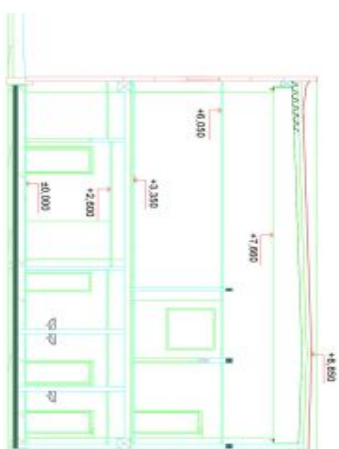
PŮDORYS 1.NP



PŮDORYS 2.NP



ŘEZ A-A



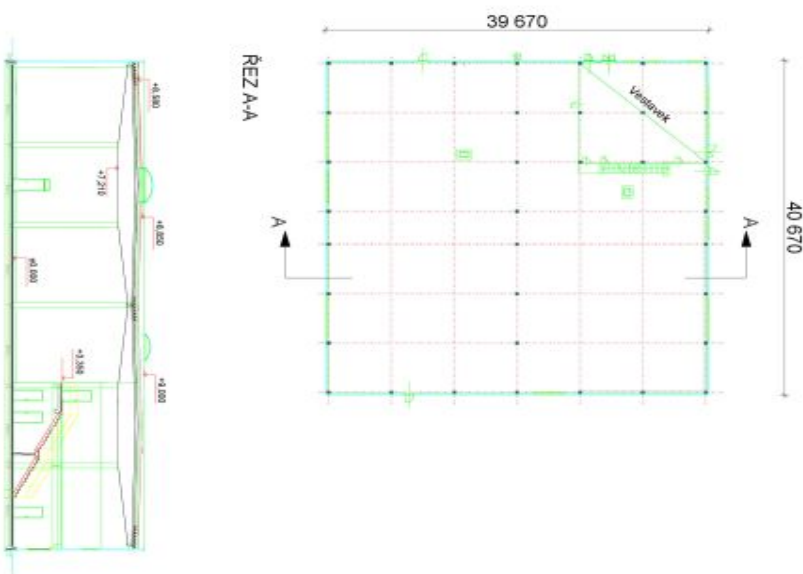


# Industrial space

2 665 m<sup>2</sup>, Plzeň-město, Plzeň, Borská

Ask for price

PDF vytvořeno zkušební verzí pdfFactory [www.fineprint.cz](http://www.fineprint.cz)



VÝROBNÍ HALA NH 1.5.2.3