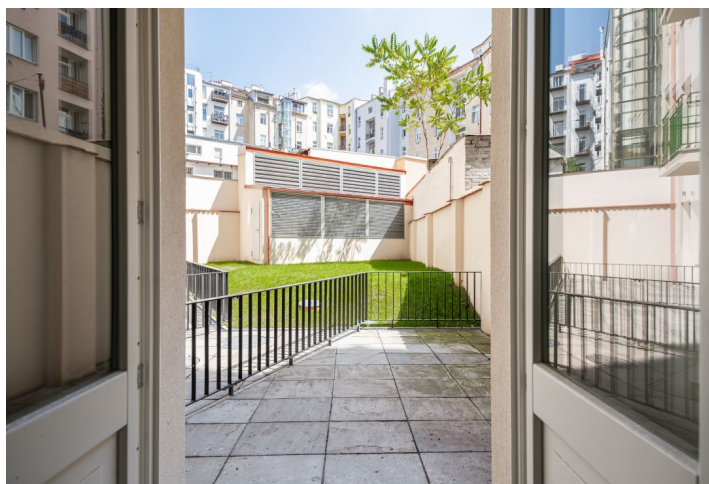
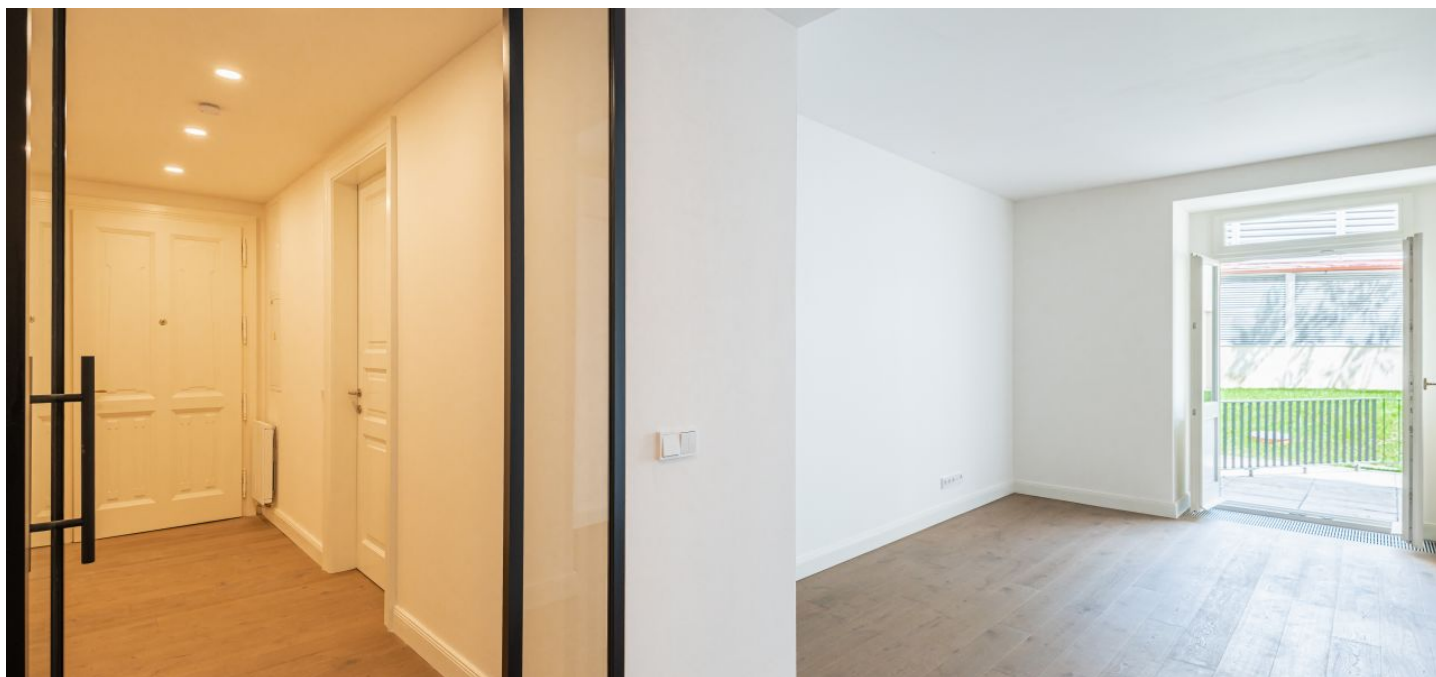




Apartment One-bedroom (2+kk)

€ 436 628 | CZK 11 070 696

59.2 m², Praha 10, Vršovice





Apartment One-bedroom (2+kk)

€ 436 628 | CZK 11 070 696

59.2 m², Praha 10, Vršovice

Total area	72 m ²
Floor area*	59 m ²
Terrace	12 m ²
Parking	-
Cellar	2 m ²
PENB	G
Reference number	41557

* Area of the unit according to the Civil Code. The area consists of the sum total area of the entire unit bounded by perimeter walls.

This classic city apartment, completely adapted to the standards of modern comfortable living, is part of a residence that is created out of an elegant apartment building located by the oldest part of Vršovice near Dannerův Park and Svatopluk Čech Square.

The layout of the 1st underground floor apartment consists of a living room with access to the **terrace**, and a preparation for a kitchen, a bedroom with space for a built-in wardrobe, a bathroom (with a **walk-in shower**, sink, and toilet), and a foyer.

The standard of facilities will include **wooden floors**, glazed or wooden coffered doors, **Laufen** sanitary ware, Tres faucets, a bidet shower, and bathroom tiles combined with colored mosaic tiles. If interested, the developer will install the kitchen unit and built-in cabinets, which can exceed the listed price. The apartment comes with a **cellar storage unit**. The 19th-century building with its distinctively ornate façade, bay windows, and decorative balcony railings will be **completely refurbished** according to the original plans.

This beautiful corner building is close to many cafes, restaurants, and small local shops. Within easy reach are medical services, banks, a post office, and a large shopping center. Trams, buses, and trains provide quick connections to the city center and other parts of the city. For active relaxation, there are numerous **sports facilities** (including indoor and outdoor swimming pools), **parks**, or the **bike trail** along the Botič Stream.

Floor area 59.2 m², terrace 12.4 m², cellar 1.9 m².



Apartment One-bedroom (2+kk)

€ 436 628 | CZK 11 070 696

59.2 m², Praha 10, Vršovice