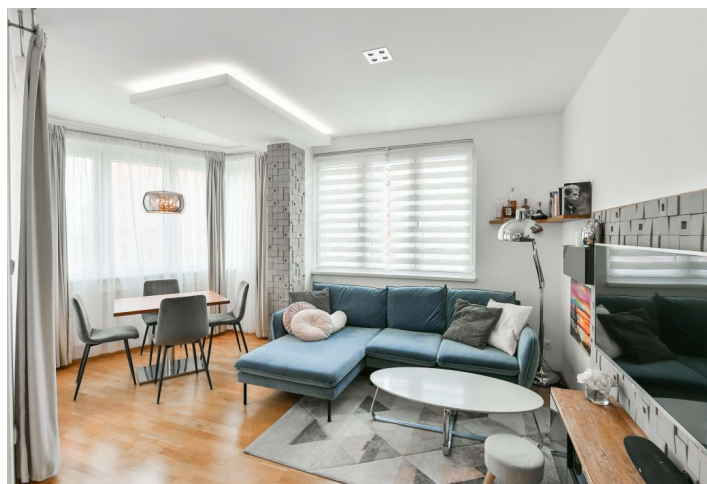




Apartment Two-bedroom (3+kk)

Rented

80.94 m², Prague 9, Libeň, U Svobodárny





Apartment Two-bedroom (3+kk)

Rented

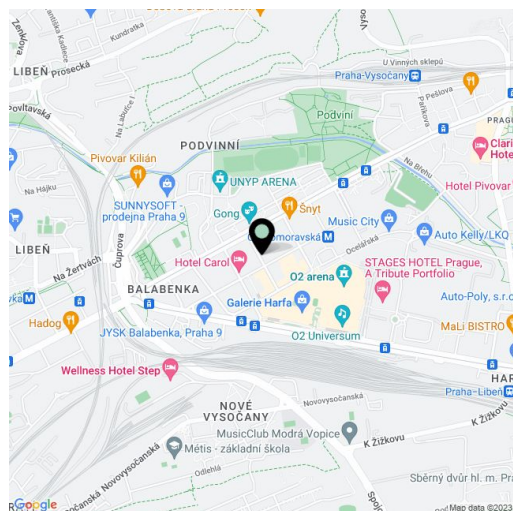
80.94 m², Prague 9, Libeň, U Svobodárny

Total area	85 m ²
Floor area*	81 m ²
Loggia	4 m ²
Parking	Garage parking.
Garage	Yes
Cellar	-
Service price	Monthly deposit for services, water, and heating: CZK 6,000. Electricity is billed separately.
PENB	C
Reference number	41603
Available from	Immediately

This furnished apartment for rent with a balcony is on the 2nd floor of the Drahobejlova Residence (2014) with a camera system and underground parking. Set in a Prague 9 residential neighborhood just steps from a tram stop, a five-minute walk from the Českomoravská metro station (line B), the Galerie Harfa shopping mall, and the O2 Arena multipurpose venue. Apart from great amenities, the location offers plenty of green spaces for relaxation and sports opportunities (a popular bike path), for example in the nearby Podvini Park and along the Rokytká Stream.

The interior features a living room with a fully fitted open plan kitchen and dining area, a master bedroom with a built-in wardrobe, a second bedroom, a bathroom including a bathtub and walk-in shower, a separate toilet, a storage room, and an entrance hall. The **balcony** is accessible from the living room and the master bedroom.

Hardwood floors, tiles, dishwasher, induction cooktop, microwave oven, wine fridge. A **garage parking** space is included in the rent.



* Area of the unit according to the Civil Code. The area consists of the sum total area of the entire unit bounded by perimeter walls.



Apartment Two-bedroom (3+kk)

Rented

80.94 m², Prague 9, Libeň, U Svobodárny

3+KK

3 NP		
Místnost		
303.01 předstěn		9,25 m ²
303.02 kuchyně		17,77 m ²
303.03 obývací pokoj		27,22 m ²
303.04 pokoj		17,80 m ²
303.05 kuchyně		1,69 m ²
303.06 wc		1,91 m ²
303.07 koupelna		5,30 m ²
303.08 balkon		3,70 m ²



Plán je orientační, není závazný. Pro více informací kontaktujte makléře. Všechny rozměry a údaje jsou orientační a mohou se lišit od skutečného stavu. Makléř není zodpovědný za přesnost údajů.

