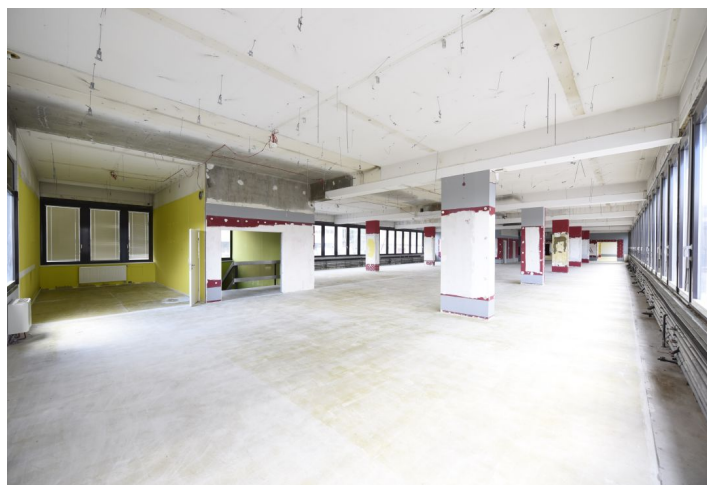




Warehouse space

Rented

2 534 m², Prague 6, Veleslavín, Evropská





Warehouse space

Rented2 534 m², Prague 6, Veleslavín, Evropská

Service price	65 CZK monthly per m ²
Total area	2 534 m ²
Ceiling height	—
Floor loading capacity	—
Column grid structure	—
Structure	—
PENB	D
Reference number	41758

Commercial space for lease in a two-storey building in Prague 6. The space is spread over two floors. The upper floor has an area of 1,515 sq.m., the lower floor about 1,020 sq.m. Possible use mainly as storage space or showroom with background. The premises are now approved as fitness. Both floors have a separate barrier-free entrance and are connected by stairs and an elevator.

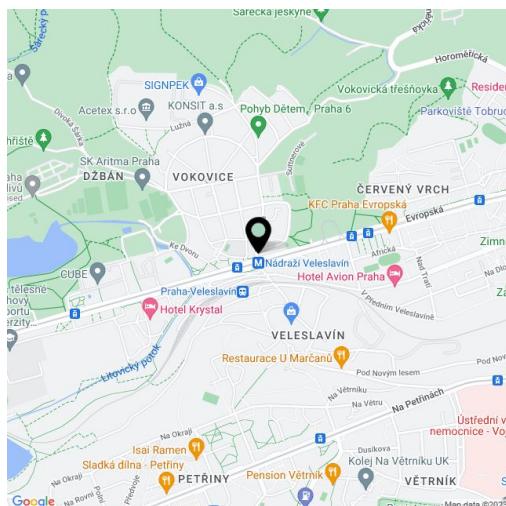
Location:

Very good accessibility by car and public transport – tram and bus stops directly outside the building, in close vicinity of the metro station Nádraží Veleslavín (line A). Easy access to Vaclav Havel Airport Prague and to the city center.

Features and Services:

- Openable windows on the 2nd floor
- Outside parking

Rental and service charges are listed without VAT. Lessee pays no commission.

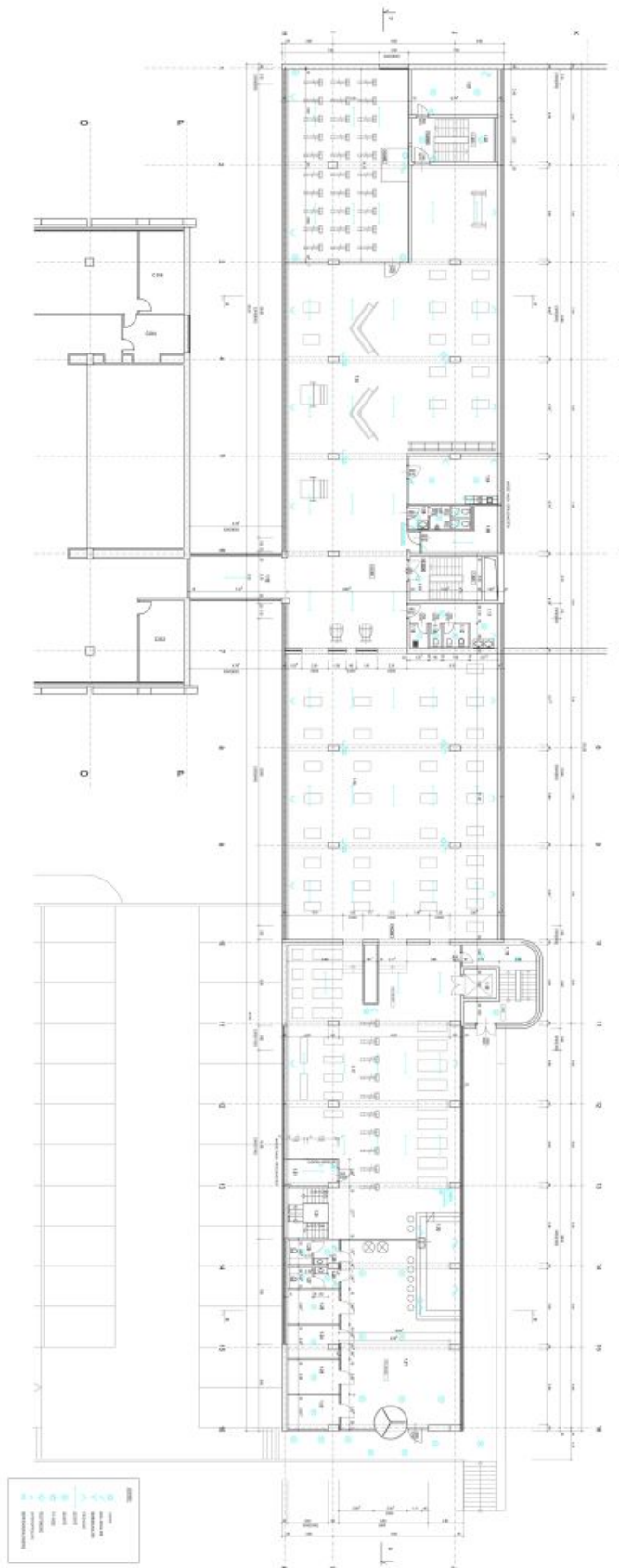




Warehouse space

2 534 m², Prague 6, Veleslavín, Evropská

Rented





Warehouse space

2 534 m², Prague 6, Veleslavin, Evropská

Rented

