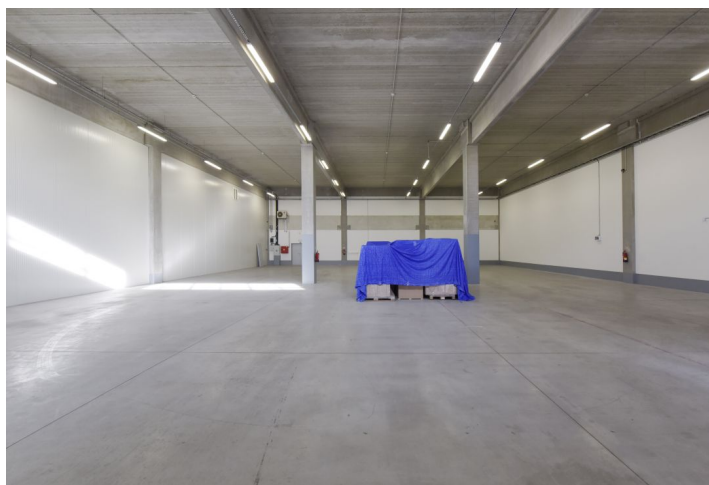




Warehouse space

909 m², Prague 9, Horní Počernice, K Bílému vrchu

Ask for price





Warehouse space

[Ask for price](#)909 m², Prague 9, Horní Počernice, K Bílému vrchu

Total area	909 m ²
Ceiling height	6 m
Floor loading capacity	5 t/m ²
Column grid structure	—
Structure	Reinforced concrete structure
PENB	C
Reference number	41783

675 sq.m. of warehouse or production space and **234 sq.m.** of offices for lease in a technology park located 20 minutes from the center of Prague. The premises are suitable for light production, trade, storage or showroom.

Location:

The industrial park is situated on the northeast edge of Prague, Exit 3 on the D10 highway (Prague – Mladá Boleslav – Germany and Poland). The park is reachable by bus from the Černý Most (line B) metro station. The Horní Počernice train station is 1 km from the park.

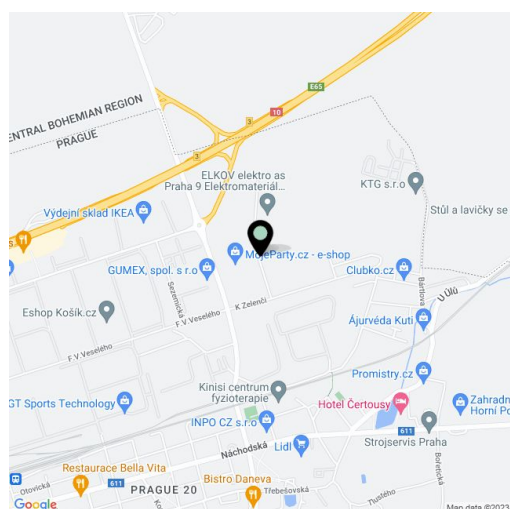
Features and Services:

- 24/7 manned security in the area
- Park maintenance
- Industrial premises / Warehouse / Retail / Showroom:
- Ground floor loading capacity 5 T/sq.m
- Clear height 6 m
- Column grid structure from 7,5 x 15 m
- Gas heating

Office:

- Cooling system
- Ventilated facade
- External blinds
- IT network installed

Rental and service charges listed without VAT. Lessee pays no commission

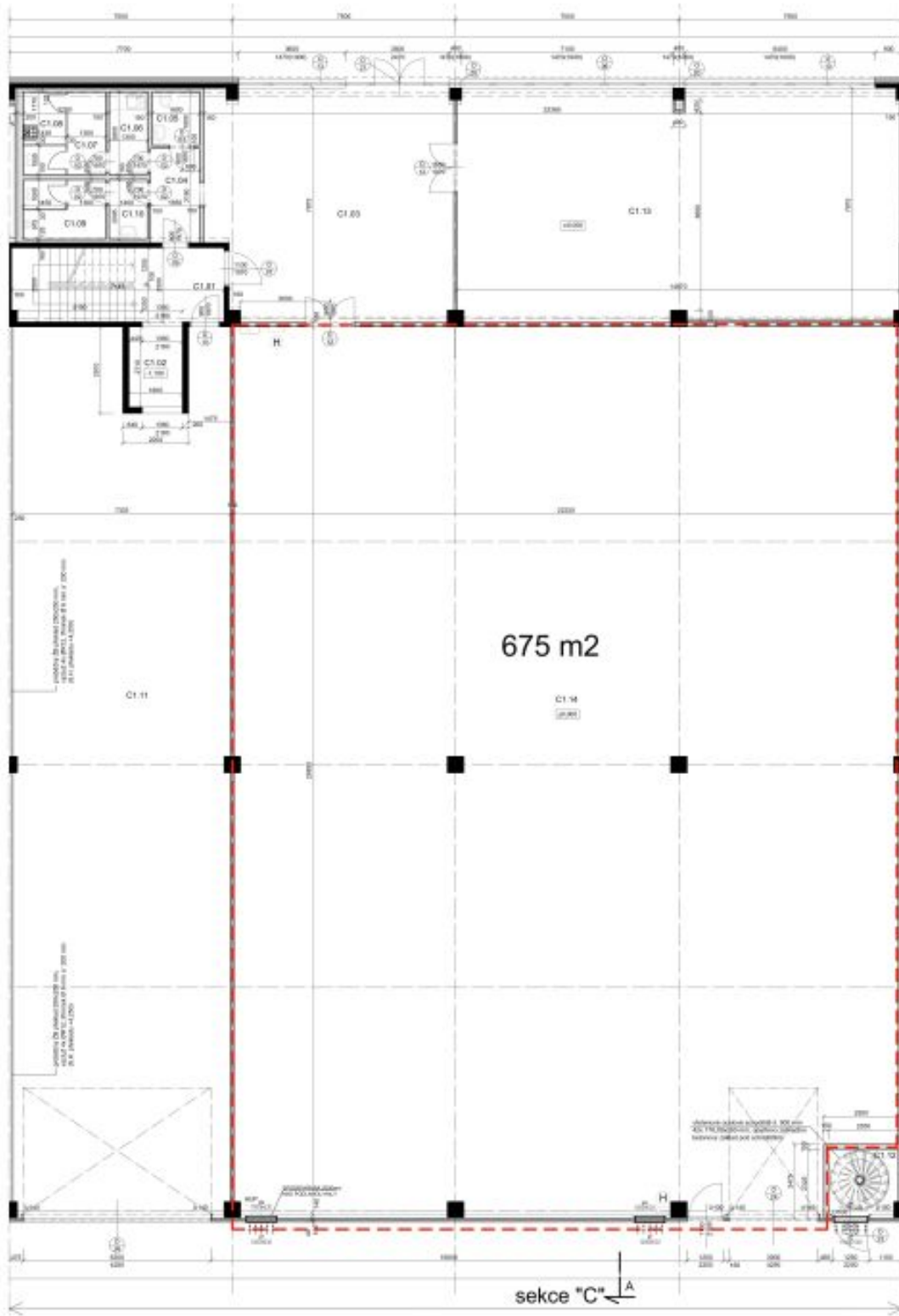




Warehouse space

Ask for price

909 m², Prague 9, Horní Počernice, K Bílému vrchu

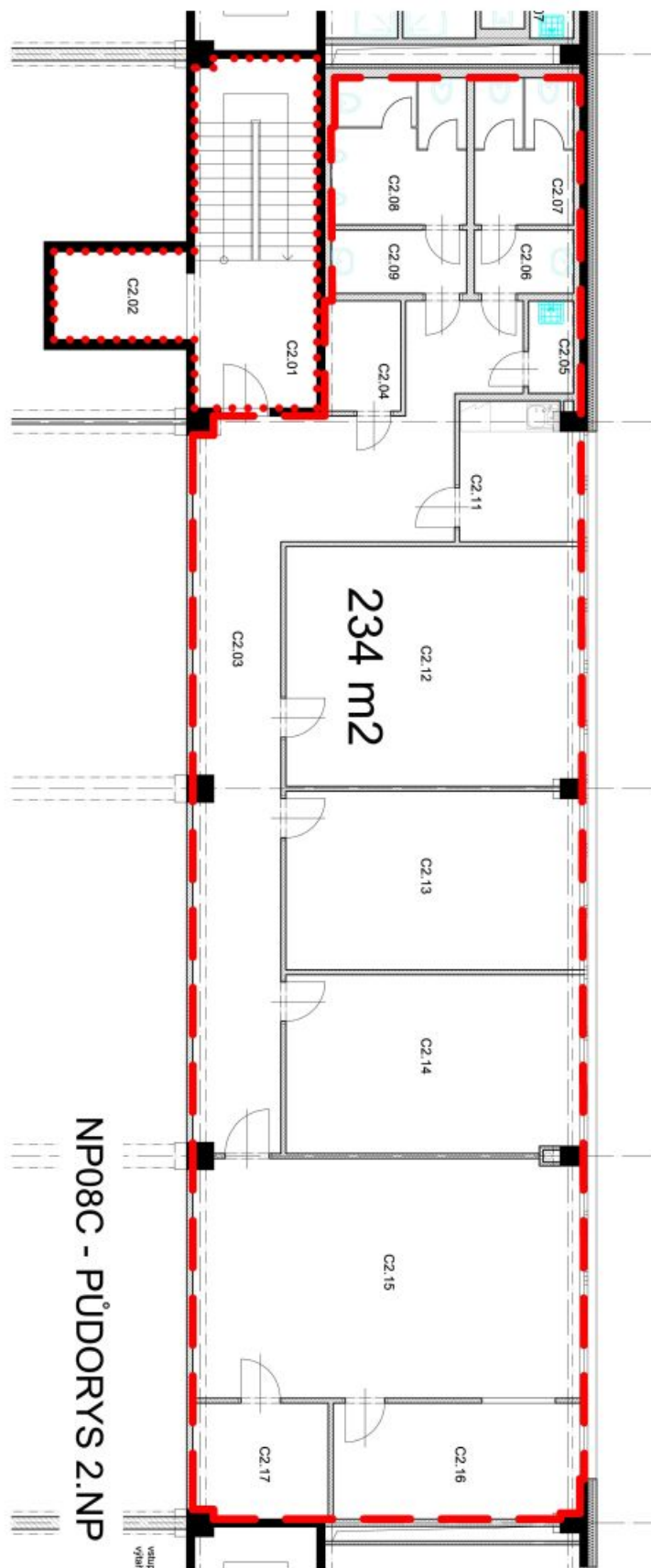




Warehouse space

909 m², Prague 9, Horní Počernice, K Bílému vrchu

Ask for price





Warehouse space

909 m², Prague 9, Horní Počernice, K Bílému vrchu

Ask for price

