



Office space

Prague 5, Smíchov, U Klikovky

€ 8.93 / m² | CZK 225 / m²



**Office space**

Prague 5, Smíchov, U Klikovky

€ 8.93 / m² | CZK 225 / m²

Service price	2 500 CZK monthly
Available area	200 m ²
Cellar	-
Parking	-
PENB	G
Reference number	41918

Office space for lease on the ground floor of a completely renovated house that used to be a Baroque manor. It is located in a residential area full of greenery near Klamovka and Skalka parks with quick access to the center. The space has openable windows, a utility room, toilets, and a kitchenette. The dominant elements of the building are the original beamed ceilings and wooden floors. Views of the garden. Furniture is not included in the premises.

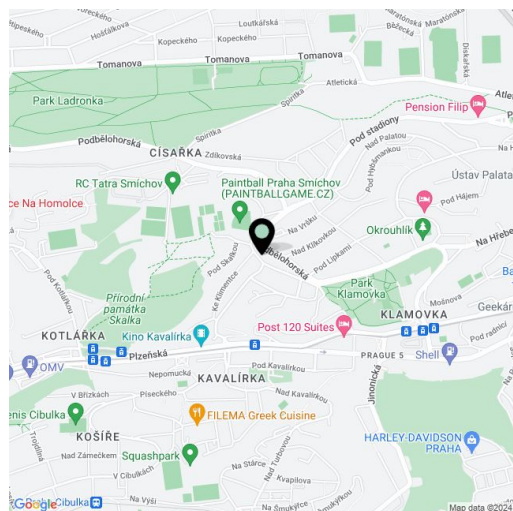
Location:

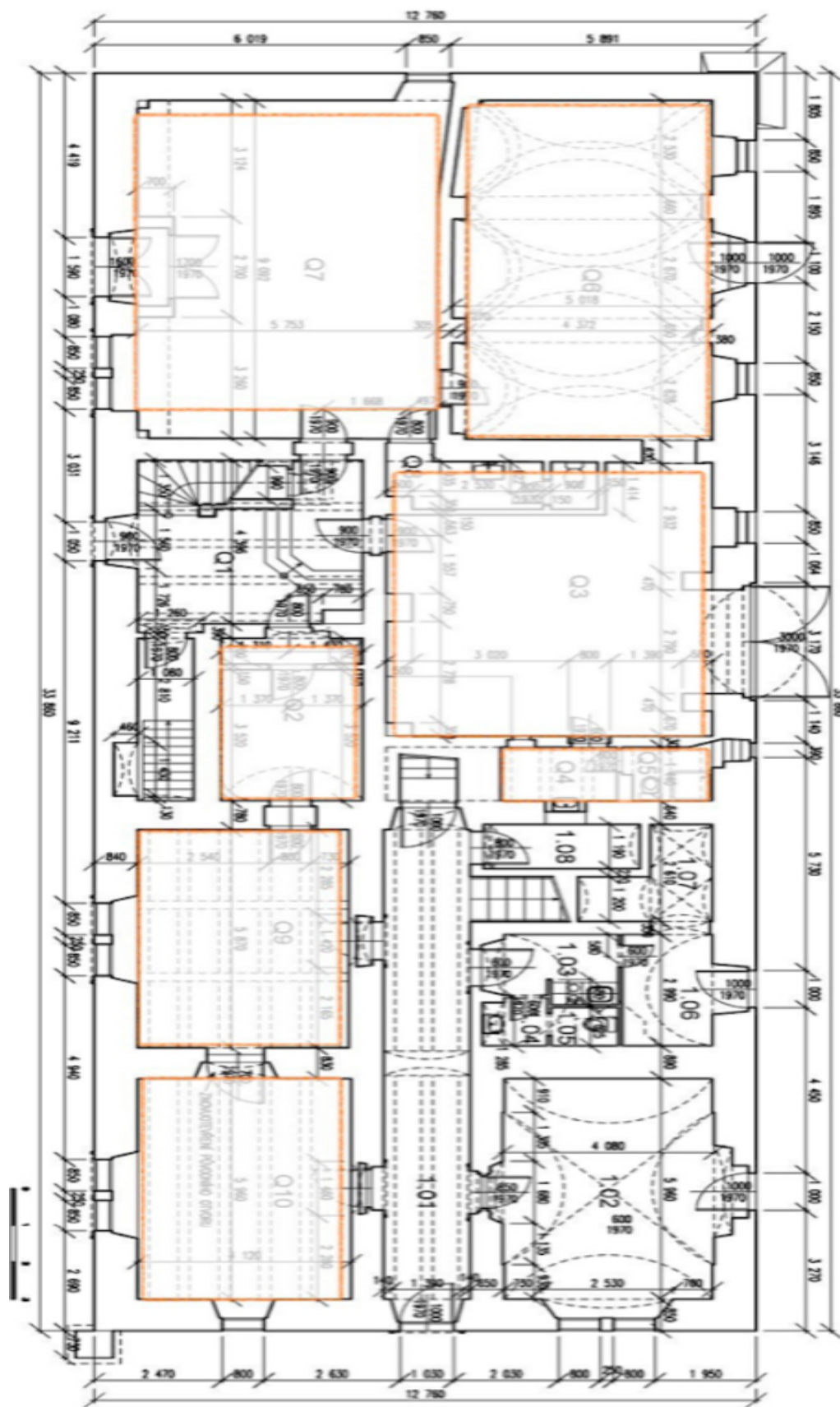
Great transport accessibility by car and public transport. The Kavalírka tram stop is a 5-minute walk away. The Anděl metro station (line B) is a 7-minute walk away. The Pod Lipkami bus stop is also located near the house.

Features and services:

- Openable windows
- Utility room
- Sanitary facilities
- Kitchenette
- Wooden floors
- Beamed ceilings
- Security doors
- Gas boiler
- Alarm

The rent is not increased by VAT, the owner is not a taxpayer. Lessee pays no commission.





PŮDORYS 1.NP