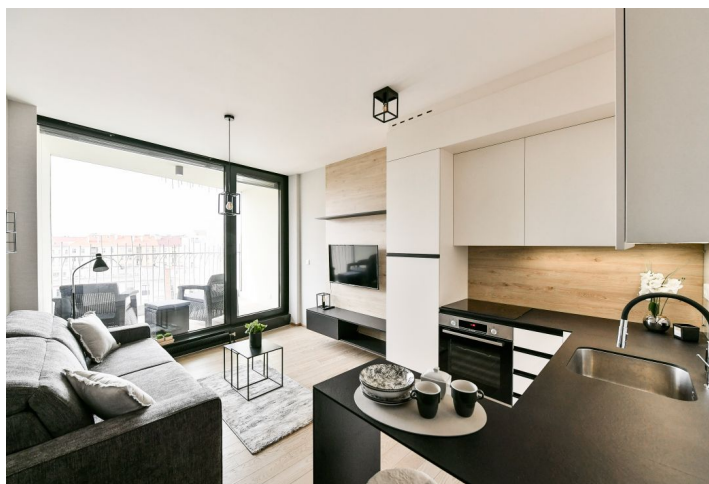
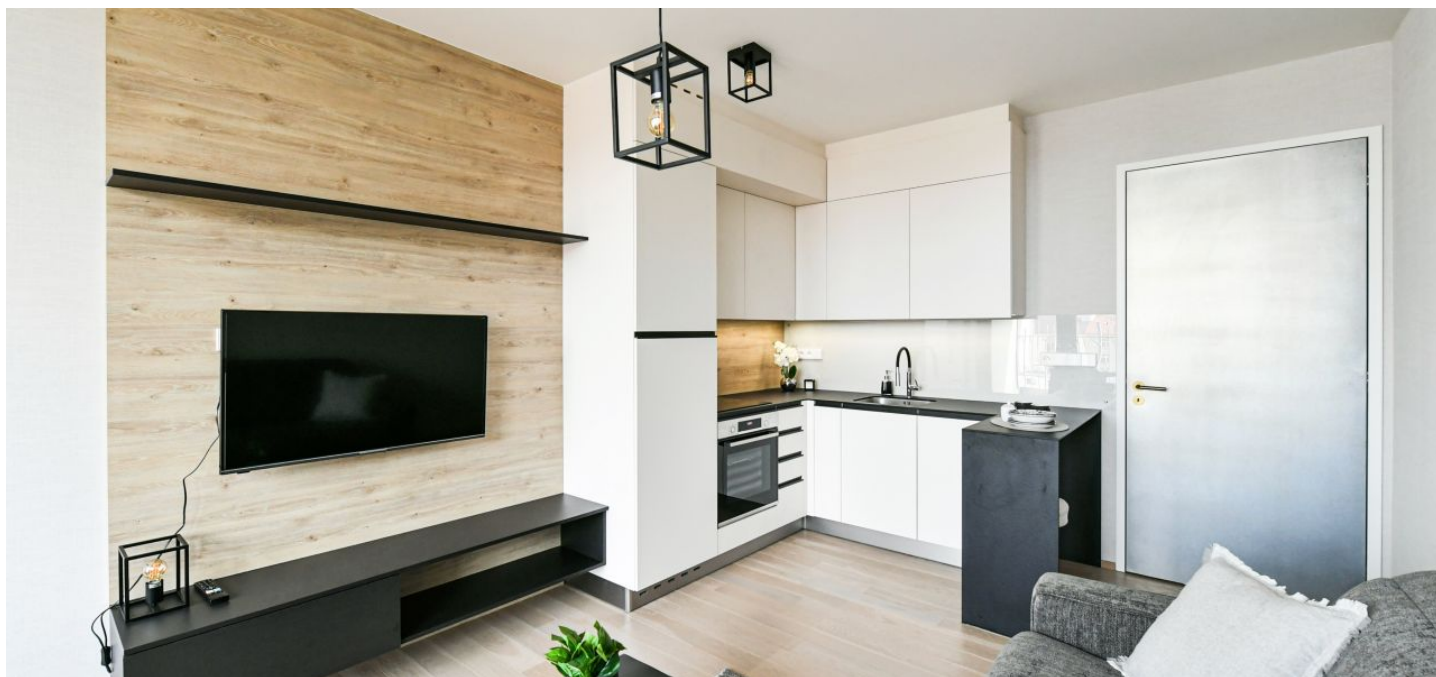




Apartment Studio (1+kk)

26 m², Prague 7, Holešovice, Komunardů

€ 877 | CZK 22 000





Apartment Studio (1+kk)

€ 877 | CZK 22 000

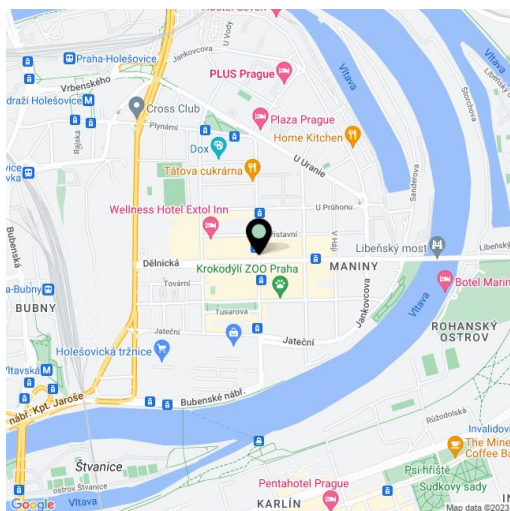
26 m², Prague 7, Holešovice, Komunardů

Total area	32 m ²
Floor area*	26 m ²
Terrace	6 m ²
Parking	Garage parking.
Garage	Yes
Cellar	Yes
Service price	Monthly deposit for services, water, and heating: CZK 3,000. Electricity is billed separately.
PENB	C
Reference number	41970
Available from	01.03.2025

Contemporary apartment in an iconic building by the renowned architect Stanislav Fiala, author of the DRN building. This furnished studio apartment with a terrace is on the 5th floor of this top-of-the-line apartment building in a dynamic district with trendy cafes, restaurants, bistros, and excellent transport accessibility. Previously industrial Holešovice has now grown into a modern district with a slightly bohemian atmosphere. The advantages of living here include its convenient access to the city center by tram and metro (Vltavská and Nádraží Holešovice stations), complete amenities, music clubs, DOX art gallery, La Fabrika and Jatka 78 theaters, a multicultural center, and more. A golf driving range is nearby, as well as a popular bike path along the Vltava River.

The interior features a living room/bedroom with a fully fitted open plan kitchen and access to the **terrace** facing the courtyard, a shower bathroom with a toilet, and an entrance hall with built-in wardrobes.

Hardwood floors, tiles, security entry door, underfloor heating in the bathroom, sofabed, Bosch kitchen appliances, induction cooktop, dishwasher, TV, **cellar**, electronic entry system, bike/pram storage, elevator. A **garage parking** space is included.



* Area of the unit according to the Civil Code. The area consists of the sum total area of the entire unit bounded by perimeter walls.