



Apartment Two-bedroom (3+kk)

Rented

60 m², Praha 2, Vinohrady, Perucká





Apartment Two-bedroom (3+kk)

Rented

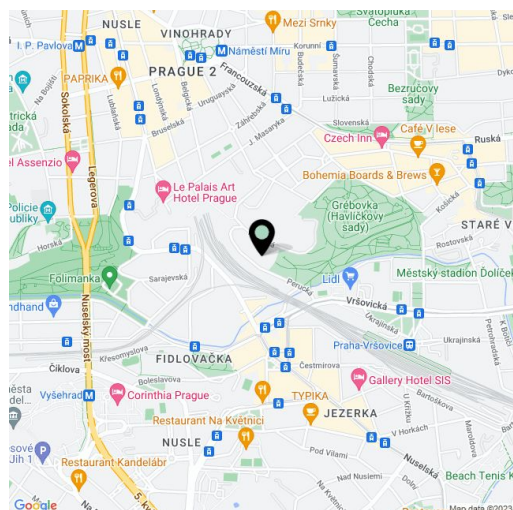
60 m², Praha 2, Vinohrady, Perucká

Total area	84 m ²
Floor area*	60 m ²
Terrace	24 m ²
Parking	Outdoor parking.
Cellar	Yes
PENB	C
Reference number	41972
Available from	Immediately

This is a completely renovated furnished air-conditioned 2-bedroom 2-bathroom apartment with parking and access to a shared terrace, on the third floor of the Depo Grébovka modern residence - a fully refurbished building with a lift, a reception and a fitness center. Situated on the edge of Vinohrady, a highly sought-after residential area close to the Grebovka and Folimanka Parks. Journey to the city center takes less than 10 minutes by tram, and from the nearby Vršovice Train Station it is only a 5-minute ride to the Main Train Station. Rich amenities are available within easy reach.

The interior features a living room with a fully fitted open plan kitchen and a dining area, 2 bedrooms - each with a shower room, a separate toilet, and an entrance hall.

Air-conditioning, hardwood floors, tiles, built-in storage, central heating, induction cooktop, washing machine, **cellar**, 24 m² on the **shared terrace**, chip entry to the building, shared laundry room. An outdoor **parking space** on the plot is included. Monthly deposit for service charges, water and heating: CZK 4,100. Electricity is billed separately.



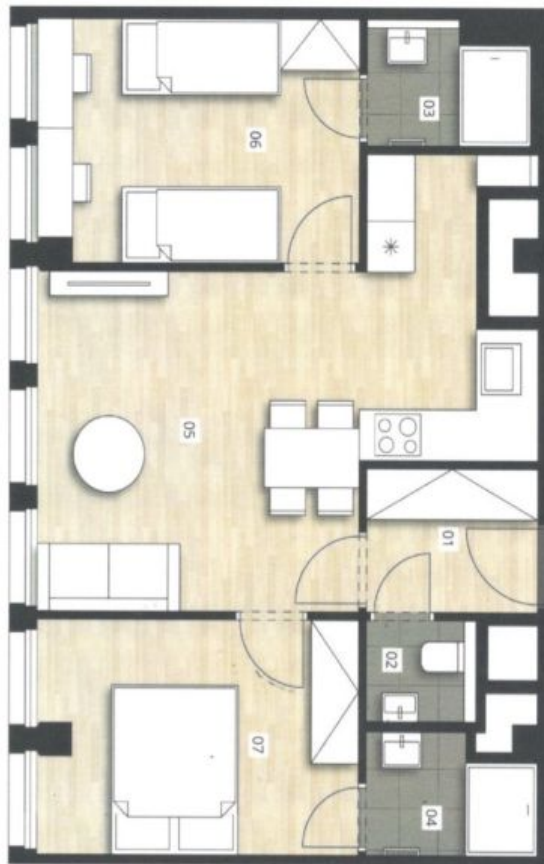
* Area of the unit according to the Civil Code. The area consists of the sum total area of the entire unit bounded by perimeter walls.



Apartment Two-bedroom (3+kk)

60 m², Praha 2, Vinohrady, Perucká

Rented



PŮDORŇS JEDNOTKY

ZÁKLADNÍ INFORMACE

ID nemovitosti	DC540Z
Vlastnictví	osobní
Dispozice	3+kk
Podlaží	4/4
Orientace	JZ
Typ budovy	cihla
Stav jednotky	volný
Stav při předání	white wall
Parkování	parkovací stání

VÝMĚRY

01 předstn	3,8 m ²
02 WC	1,7 m ²
03 koupelna	2,9 m ²
04 koupelna	2,9 m ²
05 pokoj	23,2 m ²
06 pokoj	11,6 m ²
07 pokoj	11,1 m ²
Svislé konstrukce	2,9 m ²
Podlahová plocha	60,1 m²
Pochodí střecha	25,8 m ²
Parkovací stání	13,5 m ²
Sklepní kóje	2,9 m ²
Celková plocha	102,3 m²

9