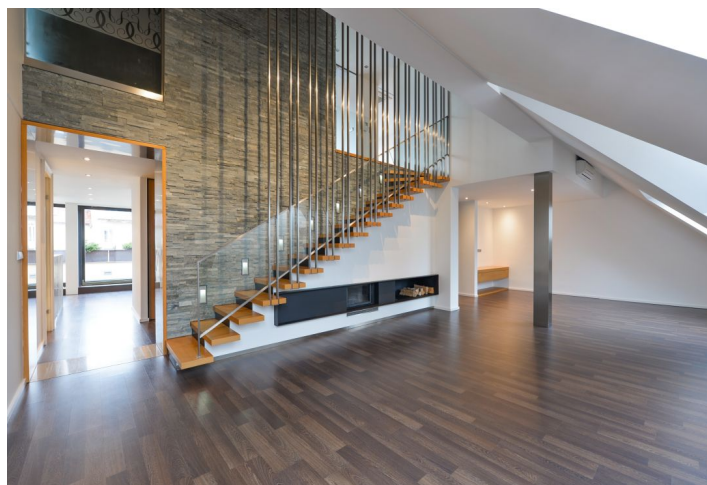




Apartment Four-bedroom (5+1)

Rented

208 m², Praha 10, Vršovice, Kodaňská





Apartment Four-bedroom (5+1)

Rented

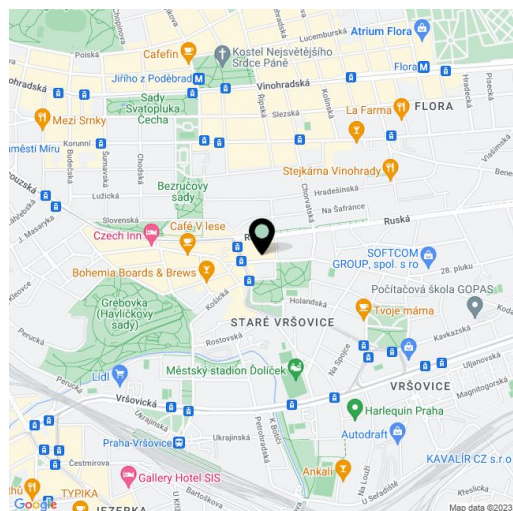
208 m², Praha 10, Vršovice, Kodaňská

Total area	262 m ²
Floor area*	208 m ²
Terrace	54 m ²
Parking	Garage parking available.
Garage	Yes
Cellar	-
PENB	E
Reference number	4203
Available from	Immediately

Stylishly designed, high quality 3-4-bedroom 3-bathroom attic flat laid out on two levels, boasting 3 terraces, on the fifth floor of a fully renovated historic building with a lift. Located in the immediate vicinity of Heroldovy Sady Park and within walking distance of Havlíčkovy sady Park, in a neighborhood with full amenities within easy reach. Moments from a tram and bus stop, two stops to Náměstí Míru metro station.

The lower floor includes a spacious living room with a fireplace, an adjacent study (or bedroom), a fully fitted eat-in kitchen with integrated appliances, one bedroom, guest toilet / laundry room, 2 terraces, and a large entry hall with a walk-in closet. The other two bedrooms are upstairs, with a large shared terrace and nice views. Each bedroom has an en-suite bathroom.

Large floor-to-ceiling windows, lots of built-in wardrobes and storage, wooden floors, underfloor heating in the bathrooms, security entry door, recessed lighting, central heating, roller blinds, washer, dryer, dishwasher, air-conditioning, satellite TV connection, video entry phone, security cameras in the building. 2 garage parking spots are included. Deposit for service charges and utilities is CZK 7000 per month. Available from July 2019.



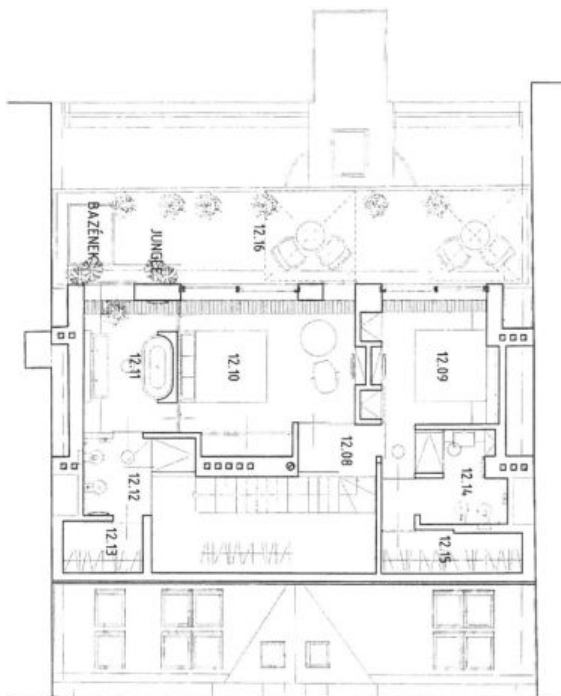
* Area of the unit according to the Civil Code. The area consists of the sum total area of the entire unit bounded by perimeter walls.



Apartment Four-bedroom (5+1)

208 m², Praha 10, Vršovice, Kodaňská

Rented



DISPOZICE 7.NP

M 1:100

TABULKA MÍSTNOSTÍ :

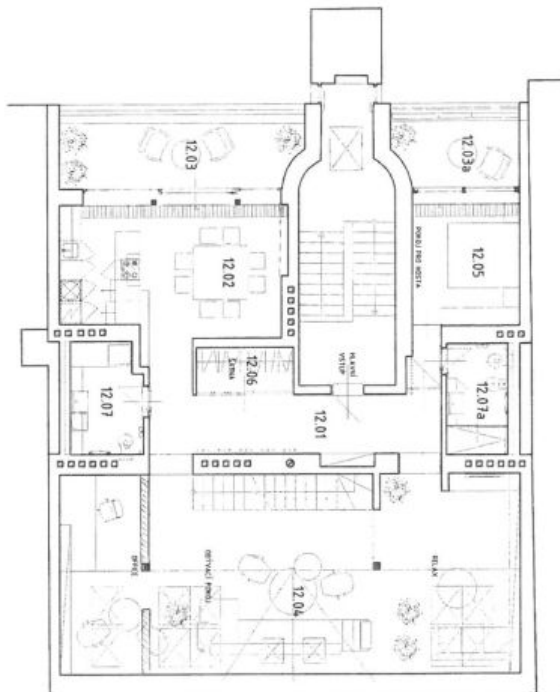
OZNAČENÍ NA VÝKRESE BYT 2.11	ÚČEL MÍSTNOSTI	PODL. PLOCHA (M ²)
12.08	PROJEKTA	2,63
12.09	PRŮKOL	5,07
12.10	PRŮKOL	21,76
12.11	KOUPELNA	9,31
12.12	KOUPELNA-WC	5,59
12.13	SKLAD	3,20
12.14	KOUPELNA-WC	6,95
12.15	SKLAD	4,85
12.16	TERASA SCHODIŠTĚ	34,10 5,03



Apartment Four-bedroom (5+1)

208 m², Praha 10, Vršovice, Kodaňská

Rented



DISPOZICE 6.NP

M 1:100

TABULKA MÍSTNOSTÍ :

OZNAČENÍ NA VÝKRESĚ	ÚČEL MÍSTNOSTI	PODL. PLOCHA (m²)
BYT LH		194,7
12.01	PŘEDSÍŇ, CHODBA	22,30
12.02	KUCHYŇSKÝ A JÍDELNÍ KOUT	13,63
12.03	TERASA	6,30
12.03a	TERASA	6,784
12.04	PŮKŮJ	10,42
12.05	PŮKŮJ	3,57
12.06	ŠATNA	6,06
12.07	WC-PRADELNA	5,28
12.07a	KOUPELNA-WC	