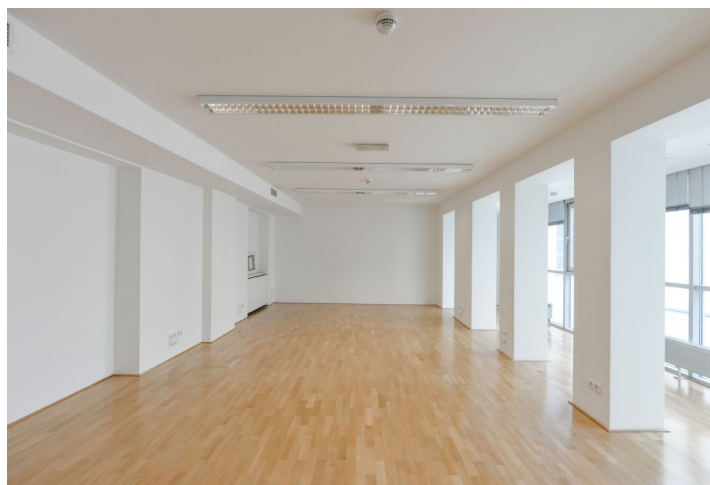
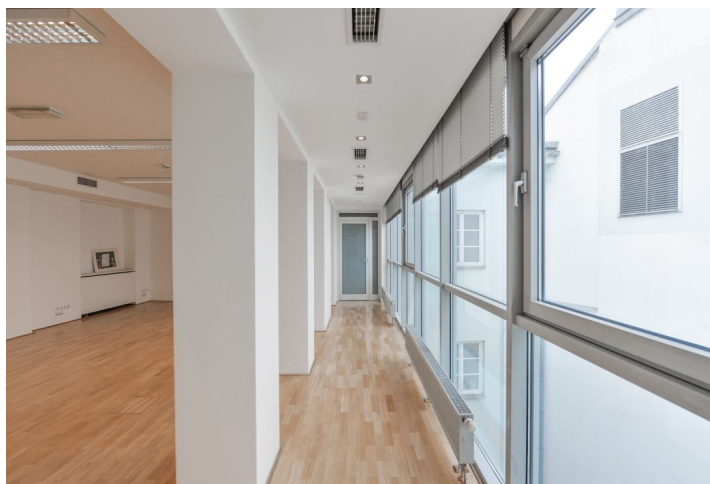




Office space

€ 13.50 / m² | CZK 341 / m²

Praha 1, Nové Město, Vodičkova



**Office space**

Praha 1, Nové Město, Vodičkova

€ 13.50 / m² | CZK 341 / m²

Service price	150 CZK monthly per m ²
Available area	171 m ²
Cellar	-
Parking	-
PENB	G
Reference number	4204

Modern office space for lease on the 4th floor in a historic building in the very centre of Prague. The building is equipped with air conditioning, modern elevator and high quality technical facilities. The space combines historical charm with modern features that meet the requirements of today's working environment. Restaurant is situated on the ground floor.

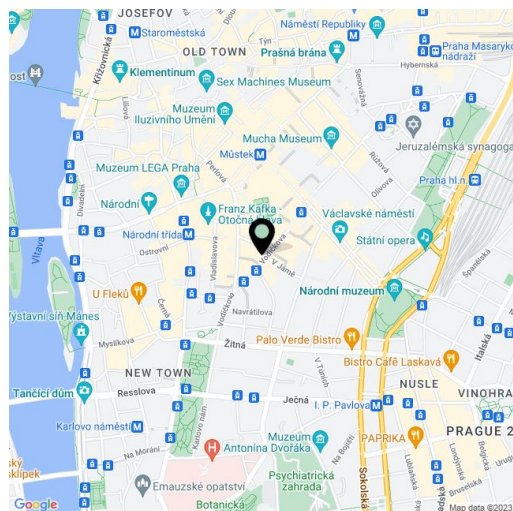
Location:

In the immediate vicinity are several tram stops (Lazarská, Vodičkova, Myslíkova and Novoměstská radnice), as well as the metro station Národní třída (line B), which ensures easy and quick access from different parts of Prague.

Features and Services:

- ISDN telephone lines
- Internet connection
- Air conditioning
- Modular suspended ceilings
- Parquet floors
- Access 24/7
- Lift
- Toilet and kitchenette
- Heating fancoil

Rental and service charges listed without VAT. Lessee pays no commission.

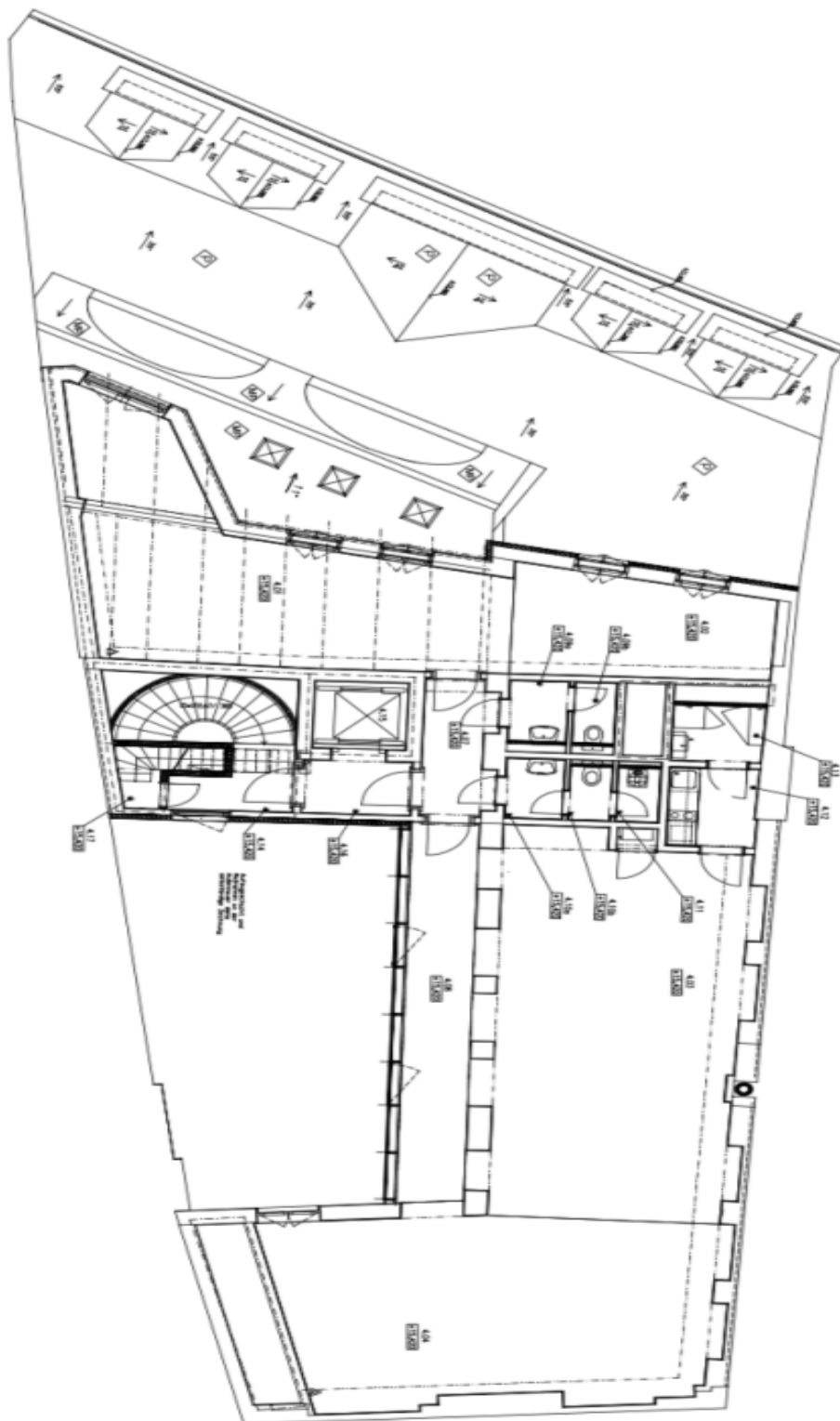




Office space

Praha 1, Nové Město, Vodičkova

€ 13.50 / m² | CZK 341 / m²



4. patro / 4th floor