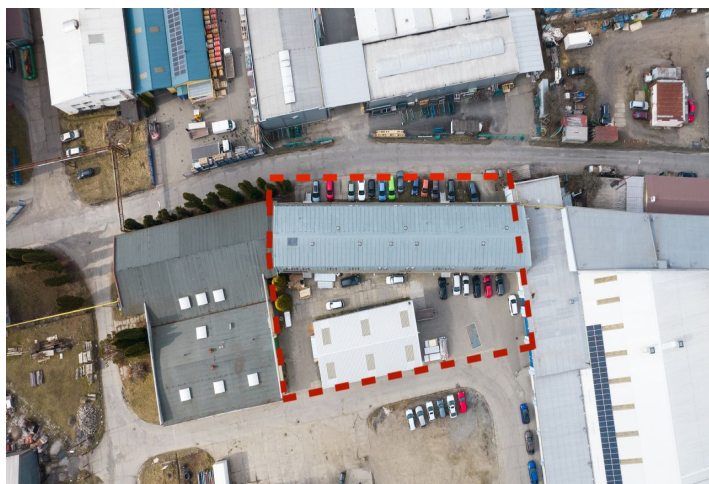




Warehouse space

1 650 m², Zlín, Napajedla, 2. května

Sold





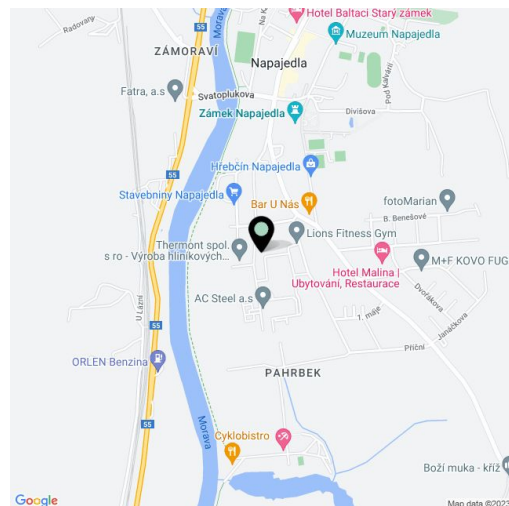
Warehouse space

1 650 m², Zlín, Napajedla, 2. května

Sold

Total area	1 650 m²
Reference number	42054

An offer of 2 separate industrial premises suitable, for example, as a manufacturing plant, warehouse, or data center in a factory complex located in the town of Napajedla near the D55 highway. The complex includes a new assembly plant that meets Czech technical standards.



The total usable area is **1,650 sq. m.** The smaller factory consists of an open high space with a large, **electrically operated entrance**. The larger, three-story building with 5m clear height on ground floor contains manufacturing facilities, **offices**, and a **separate housing unit** with a 2-bedroom layout. All three floors are connected by a **freight elevator** with a load capacity of 1,200 kg. The buildings stand right next to each other. The entrance to the complex is without restrictions; **parking** is possible directly in front of the factory.

The premises are located in a **perfectly accessible place**. There is a bus stop next to the complex and the center of Napajedla is only a 2-minute drive away. The city lies on the route of the extended **D55 highway**, which should be completed in 2026.

Total usable area 1,650 m².