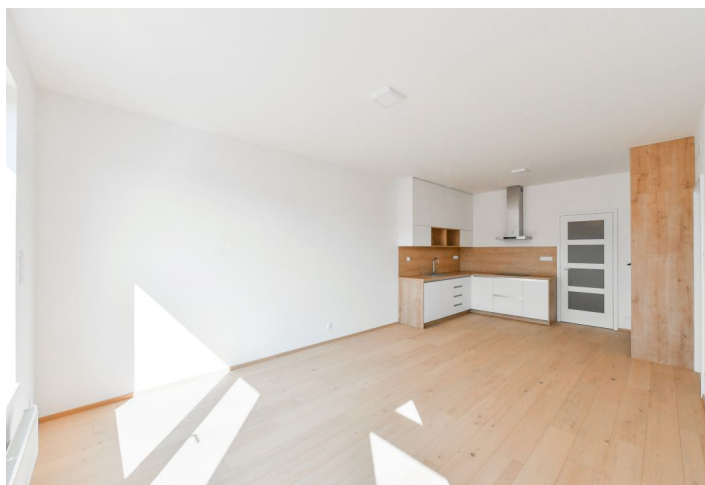




## Apartment One-bedroom (2+kk)

Rented

55.7 m<sup>2</sup>, Praha 8, Dolní Chabry, K Beranovu





## Apartment One-bedroom (2+kk)

Rented

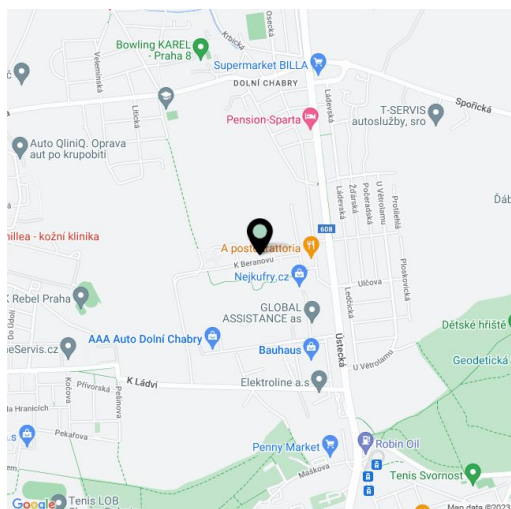
55.7 m<sup>2</sup>, Praha 8, Dolní Chabry, K Beranovu

|                  |                   |
|------------------|-------------------|
| Total area       | 73 m <sup>2</sup> |
| Floor area*      | 56 m <sup>2</sup> |
| Terrace          | 17 m <sup>2</sup> |
| Parking          | Garage parking.   |
| Garage           | Yes               |
| Cellar           | Yes               |
| PENB             | B                 |
| Reference number | 42069             |
| Available from   | Immediately       |

This brand new 1-bedroom apartment with a terrace and far reaching green views is situated on the fourth topmost floor of the contemporary Nové Chabry project. Located in a quiet Prague 8 residential area North of the center of Prague, with quick access to the city center, just a few min. by bus to Kobylisy metro station, line B, and full public amenities within easy reach. Excellent connection to the D8 highway which runs between Teplice and Mladá Boleslav. Project amenities include children's playgrounds, a maintained green space with benches, and a volleyball court.

The interior includes a living room with a fully fitted open plan kitchen and a dining area, a bedroom with a built-in wardrobe, a shower room with a toilet and a bidet shower, and an entrance hall with a built-in wardrobe. The **terrace** is accessible from both main rooms.

**Hardwood floors**, tiles, security entry door, automatic exterior blinds, new kitchen, dishwasher, microwave oven, video entry phone, cellar, pram storage room and a bike wash in the building. A **garage parking** space is included. Monthly deposit for service charges water and heating 3,000 CZK. Electricity is billed separately.



\* Area of the unit according to the Civil Code. The area consists of the sum total area of the entire unit bounded by perimeter walls.



# Apartment One-bedroom (2+kk)

55.7 m<sup>2</sup>, Praha 8, Dolní Chabry, K Beranovu

Rented

Nové  
Chabry  
Praha 8



Veškeré údaje jsou zobrazeny pro orientační účely. Dáváme za jistotu, že všechny údaje jsou správné a aktuální. Pokud se objeví jakýkoliv nesoulad mezi textem a obrázky, má přednost text. Pro více informací nás kontaktujte na telefonním čísle 224 224 224. The floor area of the apartment is measured according to the Commission Decision No. 308/2013 O.S. and the scale.



| části místnosti /<br>room number                  | název místnosti /<br>room type                  | velikost<br>místnosti /<br>room area |
|---|---|--------------------------------------|
| 2353.01   | prádlní /<br>hall                               | 6,3                                  |
| 2353.02   | obývací pokoj +<br>kk / living room,<br>kitchen | 30,2                                 |
| 2353.03   | ložnice /<br>bedroom                            | 12,9                                 |
| 2353.04   | koupelna /<br>bathroom                          | 5,0                                  |
| celková plocha bytu /<br>living area of apartment |   |                                      |
| 54,4  |   |                                      |
| stavba konstrukce /<br>vertical construction      |   |                                      |
| 1,3   |   |                                      |
| podlahová plocha bytu /<br>floor area             |   |                                      |
| 55,7  |   |                                      |
| okenní plocha /<br>terrace                        |   |                                      |
| 16,8  |   |                                      |
| okenní plocha /<br>terrace                        |   |                                      |
| 72,5  |   |                                      |