



# Office building

Prague 5, Hlubočepy, Na Zlíchově

Ask for price





## Office building

Prague 5, Hlubočepy, Na Zlíchově

**Ask for price**

Total building area	2 225 m <sup>2</sup>
Tenant consumption	—
Parking	Yes
Parking service charges	—
Parking ratio	—
Certification	—
PENB	G
Reference number	42087

**Non-residential space for lease in a multifunctional complex located on the border of Zlíchov and Hlubočepy near the extensive nature reserve Prokopské údolí. In the building is also available a sports hall or a hall for sports activities. Social facilities including toilets on each floor of the building. The building is approved as a sports facility.**

### Location:

Good accessibility by car and public transport. Close to the tram and bus stop Zlíchov, including the train station Praha-Žvahov and Praha-Hlubočepy. The nearest administrative and business centre at Anděl is 6 minutes away by car and 10 minutes by public transport.

### Features and Services:

Social facilities  
Sports hall  
Terraces  
Openable windows  
Parking

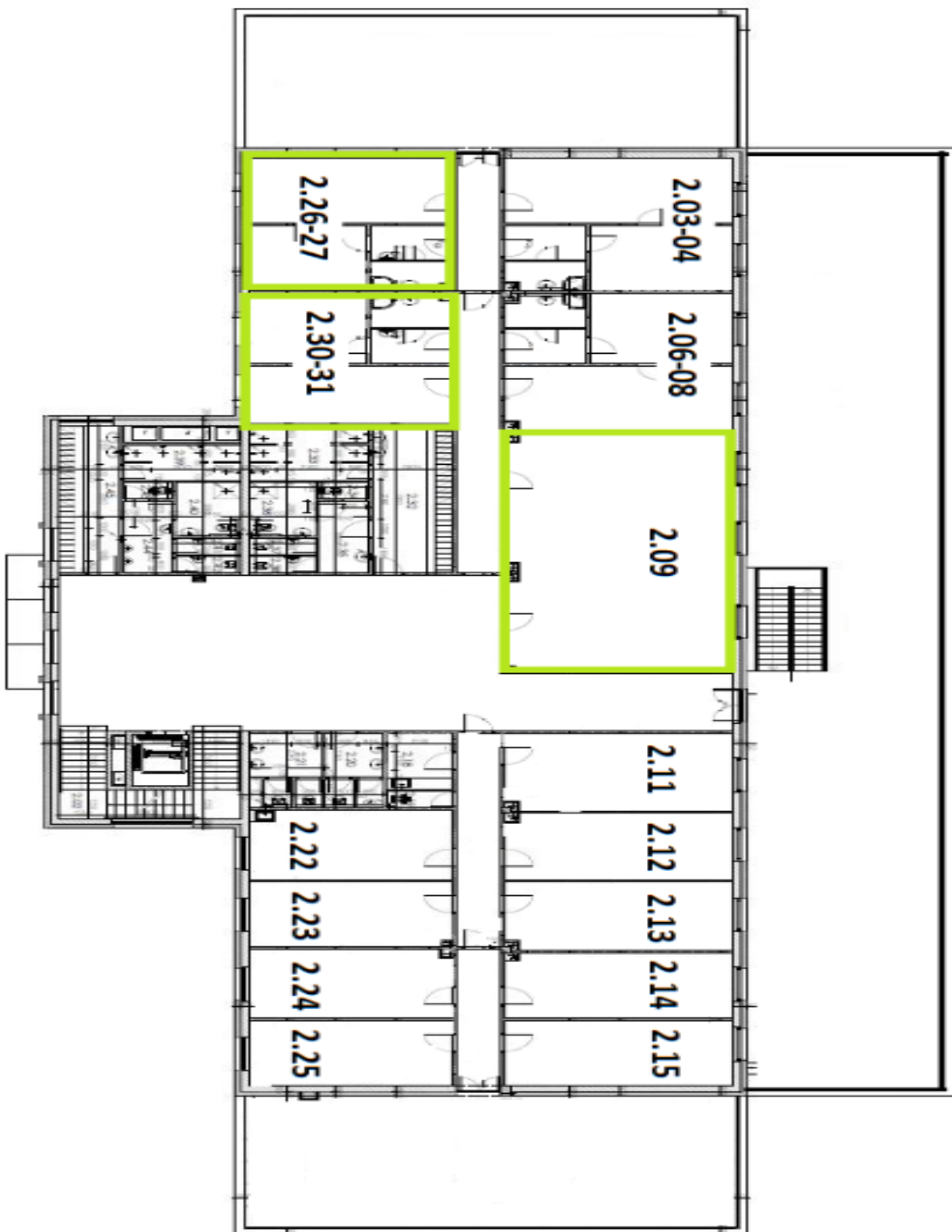
Rental and service charges listed without VAT. Lessee pays no commission.



# Office building

Prague 5, Hlubočepy, Na Zlíchově

Ask for price





# Office building

Prague 5, Hlubočepy, Na Zlíchově

Ask for price

