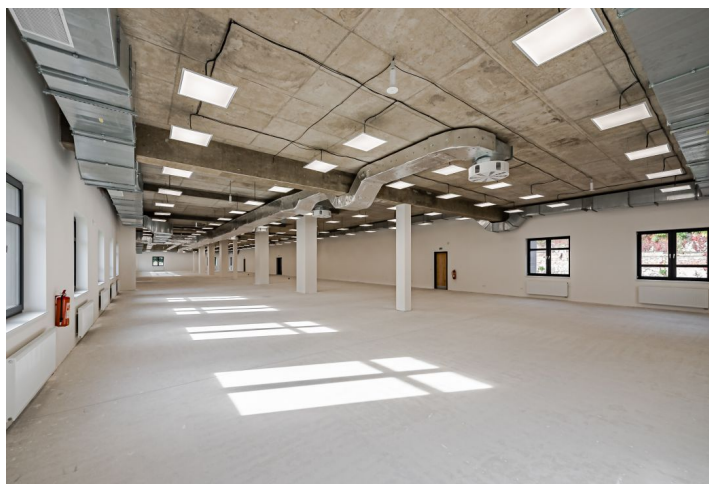
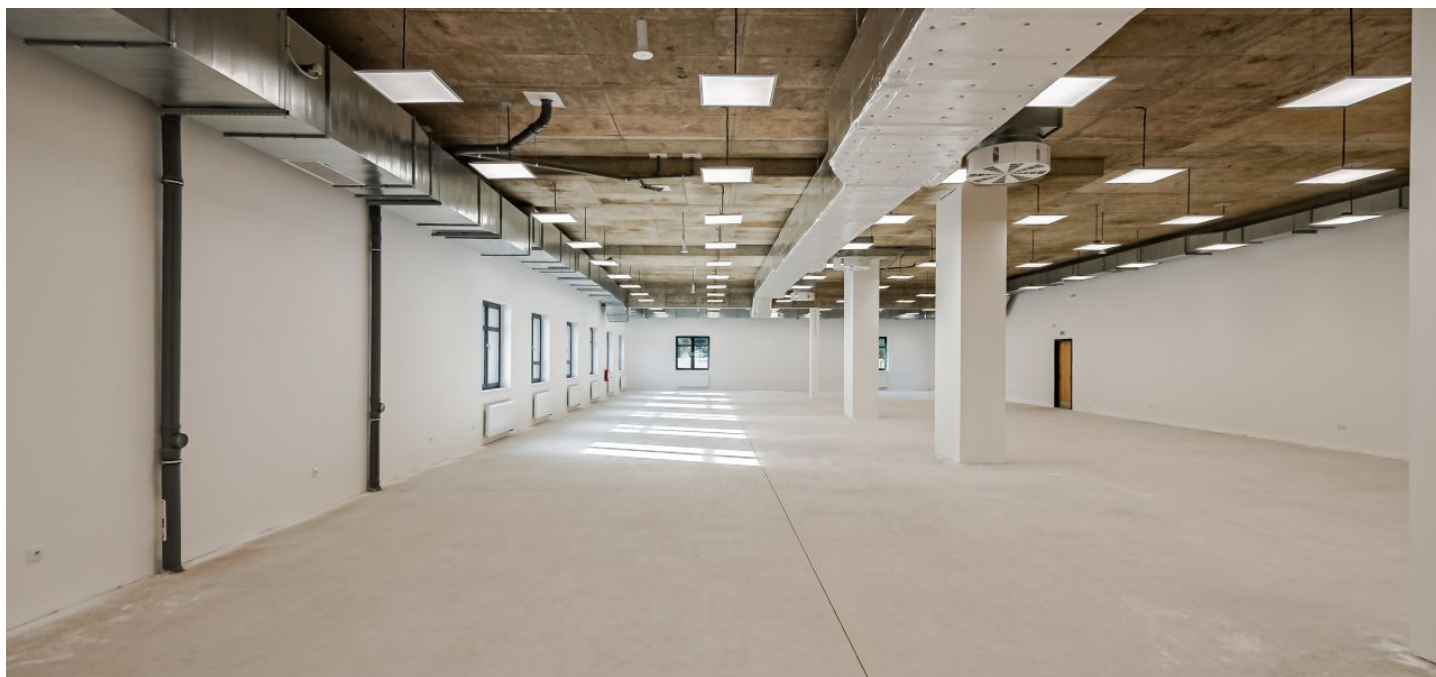




# Office space

Rented

Prague 5, Hlubočepy, Na Zlíchově



**Office space****Rented**

Prague 5, Hlubočepy, Na Zlíchově

<b>Available area</b>	577 m <sup>2</sup>
<b>Cellar</b>	-
<b>Parking</b>	Yes
<b>PENB</b>	G
<b>Reference number</b>	42128

Non-residential space for lease on the ground floor in a multifunctional complex located on the border of Zlíchov and Hlubočepy near the extensive nature reserve Prokopské údolí. In the building is also available a sports hall or a hall for sports activities. Social facilities including toilets on each floor of the building.

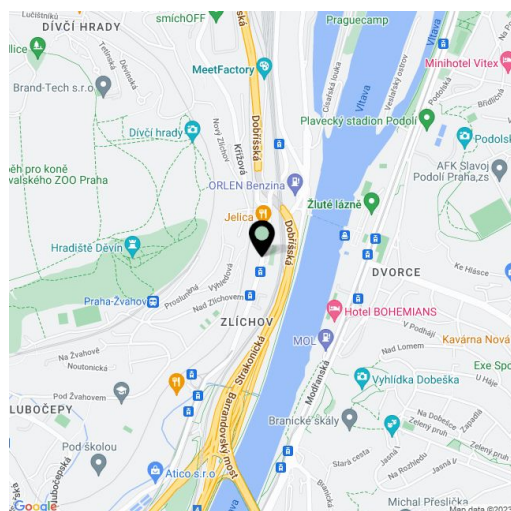
**Location:**

Good accessibility by car and public transport. Close to the tram and bus stop Zlíchov, including the train station Praha-Žvahov and Praha-Hlubočepy. The nearest administrative and business centre at Anděl is 6 minutes away by car and 10 minutes by public transport.

**Features and Services:**

- Social facilities
- Sports hall
- Terraces
- Openable windows
- Parking

Rental and service charges listed without VAT. Lessee pays no commission.





## Office space

Prague 5, Hlubočepy, Na Zlíchově

Rented

