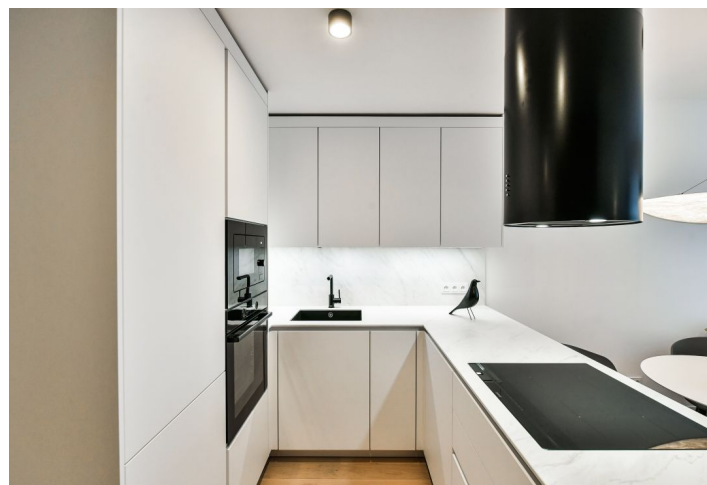




Apartment One-bedroom (2+kk)

Rented

51.9 m², Praha 8, Karlín, Rohanské nábřeží





Apartment One-bedroom (2+kk)

Rented

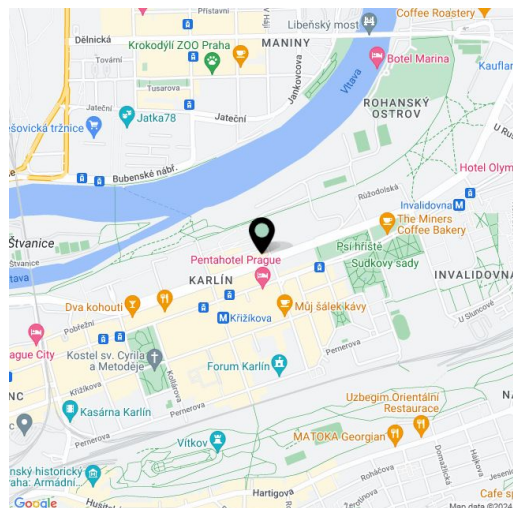
51.9 m², Praha 8, Karlín, Rohanské nábřeží

Total area	52 m ²
Parking	Garage parking is available.
Garage	Yes
Cellar	Yes
Service price	Monthly deposit for service charges and utilities in the amount of CZK 100/m ² /month + VAT.
PENB	B
Reference number	42221
Available from	Immediately

An apartment in the unique FRAGMENT residential project combining architecture and art. This is a fully furnished 1-bedroom design apartment on the second floor in a building designed by the QARTA architektura studio and finished by original sculptures of a renown Czech artist David Černý. Benefiting from amenities including a central reception, security and high standard technologies, the project is located in a highly sought after neighborhood of Karlín, just moments from the Invalidovna metro station and tram stops. Location with quick connections to the city center and complete amenities and services including numerous business centers, quality restaurants, cafes, bistros and shops. The project offers e.g. a cafe, a drugstore, a restaurant and a fitness center.

The interior features a living room with a fully fitted open plan kitchen, a bedroom, a bathroom (walk-in shower, toilet), and an entrance hall.

Hardwood floors, large format tiles, security entry door, built-in wardrobes, oversized aluminum windows, **Loxone** smart home system, ceiling heating and cooling, heat recovery ventilation system, heat pump, washer / dryer, dishwasher, microwave oven, bike storage in the building. A **cellar** and on-site **garage parking** is available at an additional cost.



* Area of the unit according to the Civil Code. The area consists of the sum total area of the entire unit bounded by perimeter walls.



Apartment One-bedroom (2+kk)

51.9 m², Praha 8, Karlín, Rohanské nábřeží

Rented





Apartment One-bedroom (2+kk)

Rented

51.9 m², Praha 8, Karlín, Rohanské nábřeží

