



Apartment Three-bedroom (4+1)

Rented

145.8 m², Prague 1, Staré Město, Melantrichova





Apartment Three-bedroom (4+1)

Rented

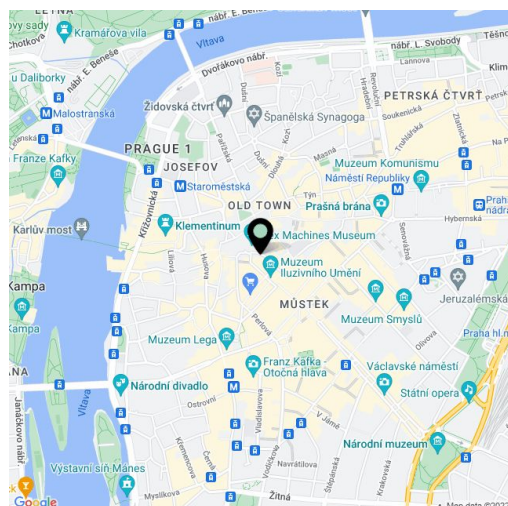
145.8 m², Prague 1, Staré Město, Melantrichova

Total area	146 m ²
Cellar	Yes
PENB	G
Reference number	42275

This is a completely renovated and furnished air-conditioned 3-bedroom 3-bathroom apartment with a timeless interior finished to a high standard. The impressive combination of original handicraft elements with modern technologies and a thoughtful layout creates comfortable living in a boutique apartment building, which stands in the very historic center of Prague. This unique location in the Old Town is within walking distance of everything you need and is well accessible by subway and tram. It is close to the Old Town and Wenceslas Squares, with a wide range of restaurants, cafes, clubs, and theaters in the vicinity, as well as a host of other necessary services—grocery stores, other types of shops, and schools of all levels.

The 2nd floor apartment consists of a living room, a fully fitted eat-in kitchen and 3 bedrooms, each with its own bathroom. The master bedroom also has a **walk-in closet**. An entrance hall and a large utility room with storage space complete the space.

Original renovated **parquet floors** combined with new oak ones, **casement windows** with triple-glazed panes, built-in storage, **Light Works designer light fixtures**, original coffered interior doors, **travertine** tiling in the bathrooms, heating by a heat pump, cooling, washer / dryer, dishwasher, induction cooktop, microwave oven, American type Hisense refrigerator, **cellar**. Monthly deposit for service charges and water: CZK 2,500 for two persons. Electricity is billed separately.

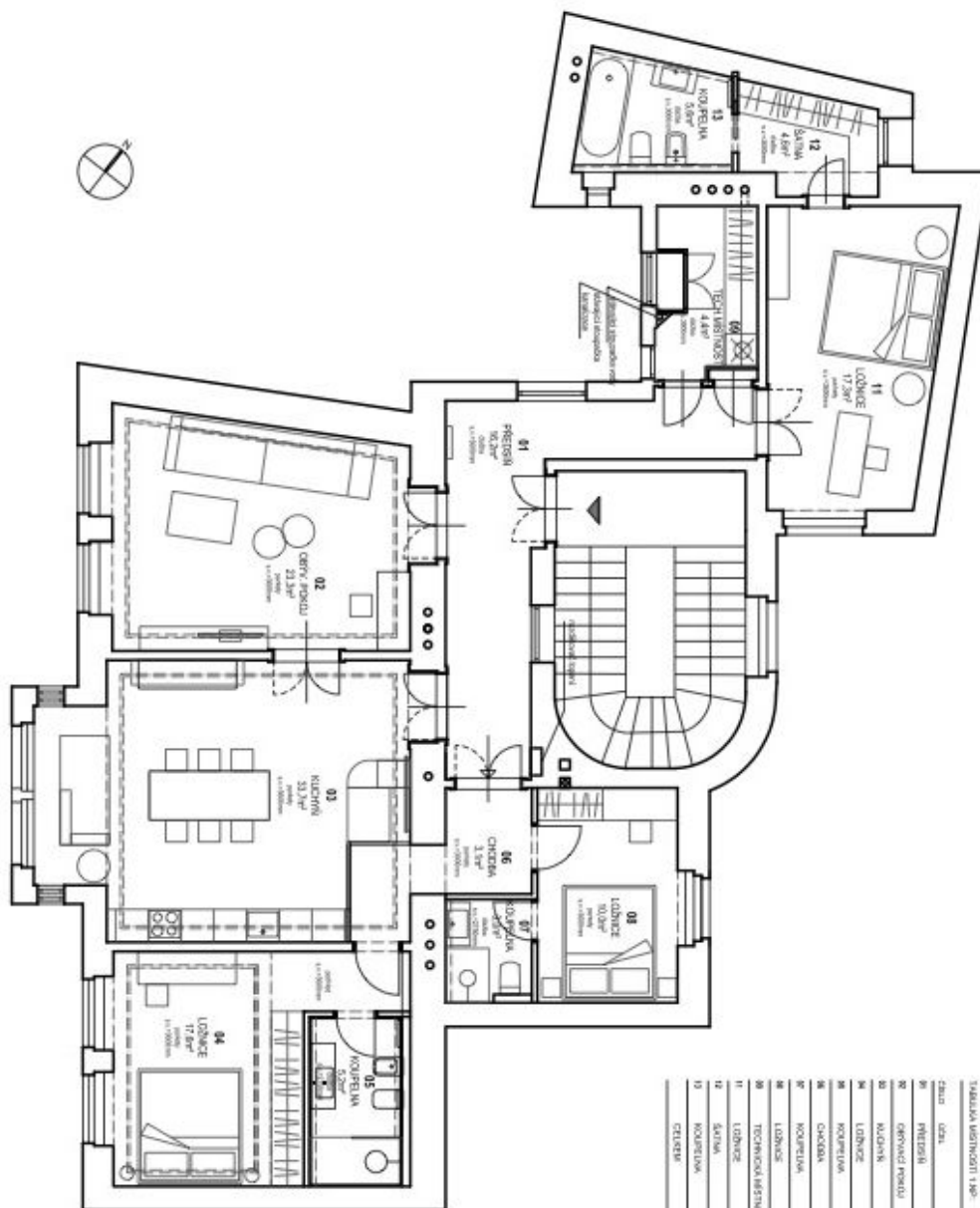




Apartment Three-bedroom (4+1)

145.8 m², Prague 1, Staré Město, Melantrichova

Rented



STABILA UBYTOVNOSTI 1 NP

Číslo	Učeln.	% Účeln. m ²
01	PRŮJEKT	80,2
02	OBYVACÍ POKOJ	23,9
03	KUCHYŇ	30,7
04	LOŽNICE	17,8
05	KUCHYŇ	3,2
06	LOŽNICE	3,1
07	LOŽNICE	3,0
08	LOŽNICE	3,0
09	TOALETNA	3,0
10	STUPEŇ	17,9
11	CHODBA	4,6
12	KUCHYŇ	5,0
13	CHODBA	18,0