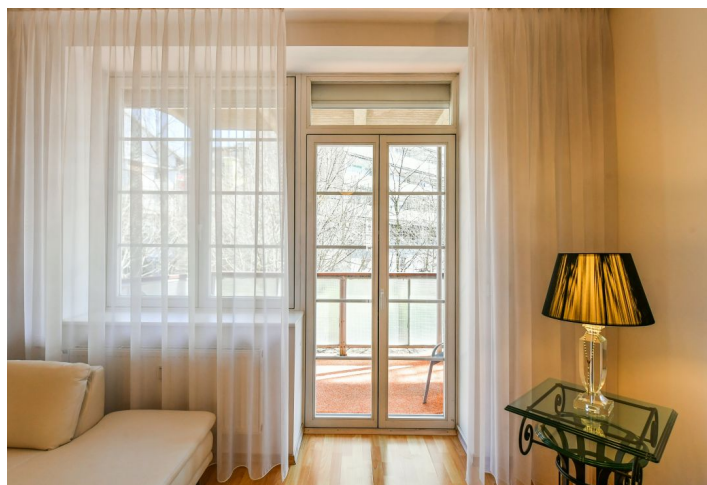




## Apartment Two-bedroom (3+kk)

Sold

109 m<sup>2</sup>, Praha 6, Veveslavín, Pláničkova





## Apartment Two-bedroom (3+kk)

**Sold**109 m<sup>2</sup>, Praha 6, Veveslavín, Pláničkova

Total area	118 m <sup>2</sup>
Floor area*	109 m <sup>2</sup>
Balcony	9 m <sup>2</sup>
Parking	Garage parking space no. 186
Garage	Yes
Cellar	-
Service price	6 450 CZK monthly
PENB	G
Reference number	42285

This spacious airy apartment with a balcony and a garage parking space is part of one of the first premium residential projects in Prague: Areál Hvězda. This complex of buildings surrounded by greenery was created in 1997 according to the designs of Vlado Milunić, the author of the Dancing House. A perfect location with a complete range of services and excellent transport accessibility.

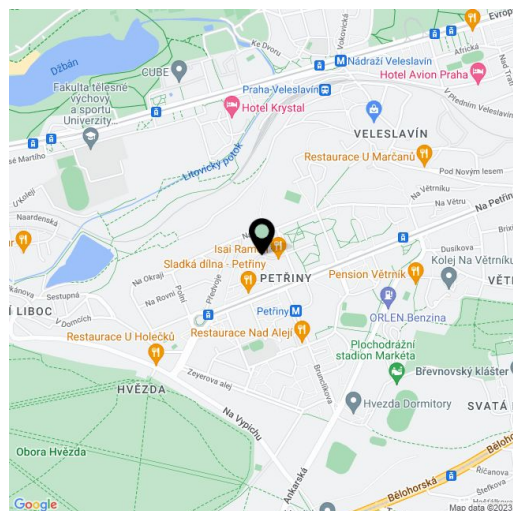
The area of the apartment on the 1st floor is divided into a **more than 50-meter living room** with an adjoining bright kitchen and **sunny balcony overlooking the greenery**, 2 bedrooms (east-facing and west-facing), a bathroom, a separate toilet, a dressing room, and an entrance hall.

Facilities include floating **wooden** floors, and wooden Euro windows with double glazing and electrically operated **exterior blinds**. Central heating. The purchase price includes a **garage parking space**. The residence has a reception, 24-hour security, and a caretaker.

An ideal location **right next to a metro station** and tram stop, near **Hvězda Park, Libocký Pond, and close to Ladronka Park**. In the immediate vicinity, there are shops including a farm shop or supermarket, a kindergarten and 2 elementary schools as well as a high school, cafes, and restaurants. Medical services are also within easy reach. The ride to the city center takes only a few minutes, and the nearby Prague Ring Road speeds up traveling by car. The drive to the airport is also fast.

Interior 108.65 m<sup>2</sup>, balcony 8.25 m<sup>2</sup>.

In addition to regular property viewings, we also offer real-time video viewings via WhatsApp, FaceTime, Messenger, Skype, and other apps.



\* Area of the unit according to the Civil Code. The area consists of the sum total area of the entire unit bounded by perimeter walls.





## Apartment Two-bedroom (3+kk)

109 m<sup>2</sup>, Praha 6, Veleslavín, Pláničkova

Sold

