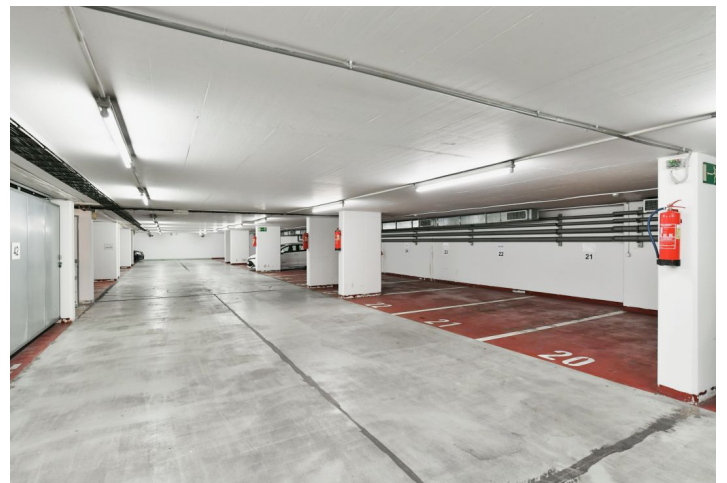
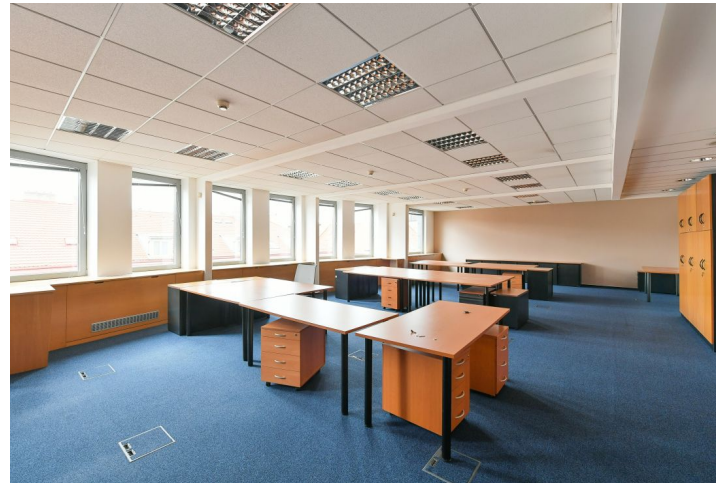




## Office space

Prague 2, Vinohrady, Bělehradská

€ 14.50 / m<sup>2</sup> | CZK 344 / m<sup>2</sup>





## Office space

Prague 2, Vinohrady, Bělehradská

€ 14.50 / m<sup>2</sup> | CZK 344 / m<sup>2</sup>

<b>Service price</b>	110 CZK monthly per m <sup>2</sup>
<b>Available area</b>	644 m <sup>2</sup>
<b>Parking</b>	Yes
<b>PENB</b>	G
<b>Reference number</b>	42305

Office space for lease on the 2nd floor in An administrative building located in the city center. The building was completed in 1998 by Czech architect Ing. arch. Martin Kotík. Raster, point, and structural façade with a framed fire protection structure with a shading system. The basement offers two levels of parking with two automated parking systems. There are two elevators, kitchenettes, toilets and ample terraces with views. The building also has openable windows, CCTV, carpets, and smoke detectors.

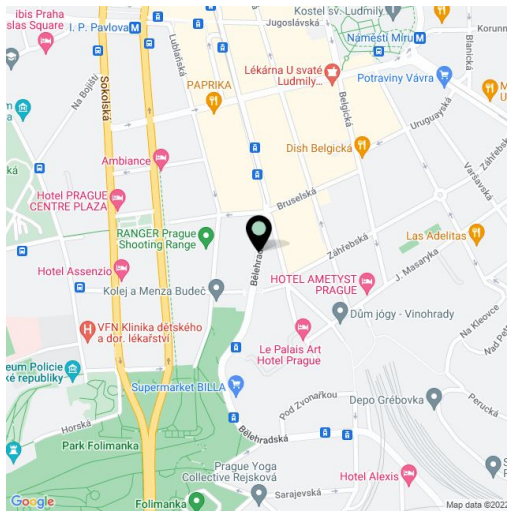
### Location:

Excellent accessibility by car and public transport. The I.P. Pavlova tram stop and I.P. Pavlova metro station (line C) are nearby. Wenceslas Square is 10 minutes away by metro or tram. Complete civic amenities in the vicinity.

### Features and services:

- Floor boxes
- Carpets
- Kitchenettes
- Sanitary facilities
- Fan coils
- Alarm
- Lighting
- Terraces
- Double floor
- Openable windows
- Smoke detector
- CCTV
- 2 elevators
- Underground parking

Rental and service charges are listed without VAT. Lessee pays no commission.





## Office space

Prague 2, Vinohrady, Bělehradská

€ 14.50 / m<sup>2</sup> | CZK 344 / m<sup>2</sup>

