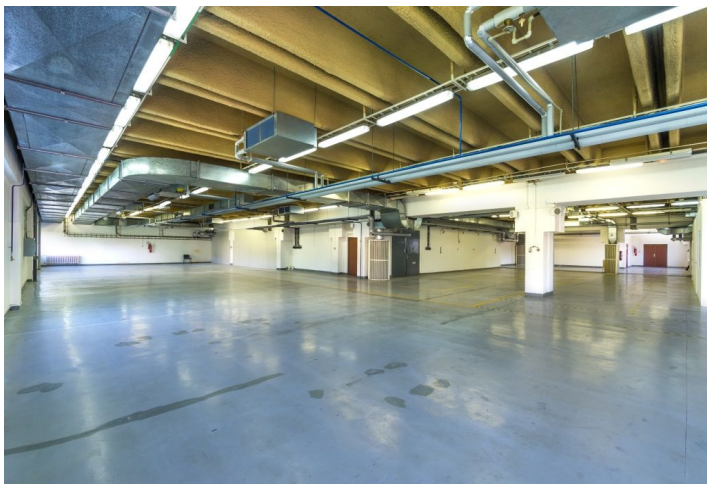
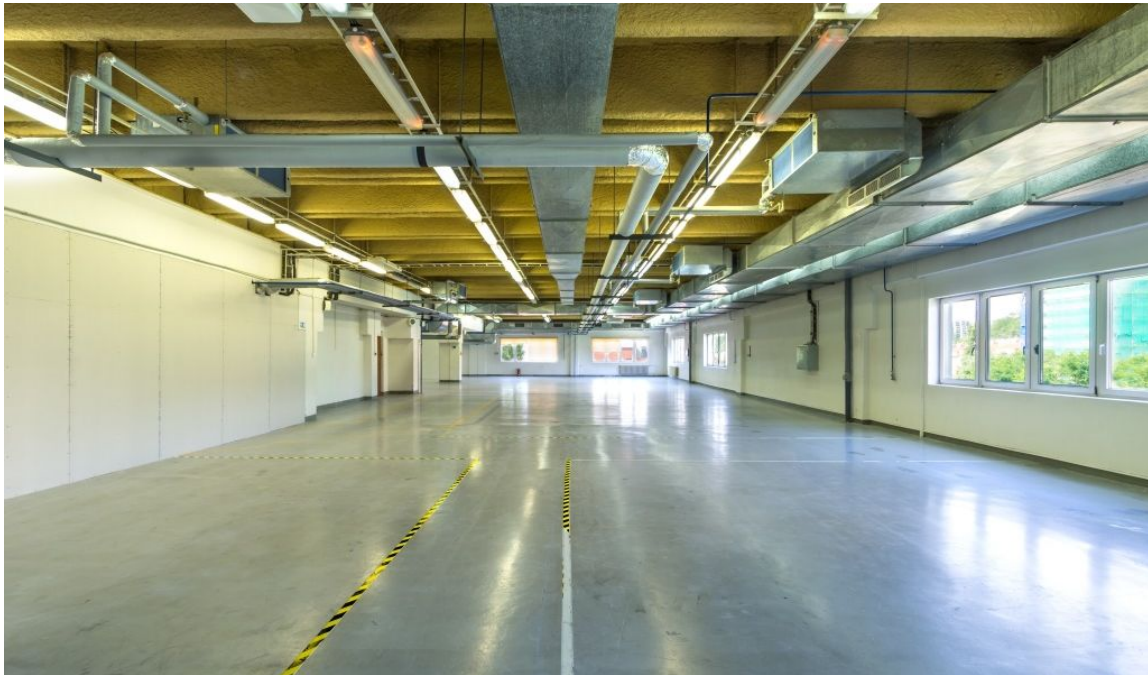




Warehouse space

230 m², Prague 4, Michle, Ohradní

Ask for price





Warehouse space

230 m², Prague 4, Michle, Ohradní

Ask for price

Total area	230 m ²
Min. area	230 m ²
Ceiling height	3.5 m
Floor loading capacity	3 t/m ²
Column grid structure	—
Structure	—
PENB	G
Reference number	42382

Industrial, warehouse and office space for lease in the industrial park situated in Prague 4 . The premises are suitable for logistics services, light manufacturing and business activity.

Location:

The park is situated in Prague 4 – Michle. Close to the Prague Ring Road with good connections to the highways. Good transport accessibility.

Features and Services:

- Flexible units (storage / light production / showroom / office)
- Onsite property management
- 24/7 security service
- Park maintenance
- Sufficient parking space

Industrial/Warehouse space:

- 2 loading ramps
- Clear approximately 3,5 m
- Utility connections (water, sewage, electricity)

Lessee pays no commission

