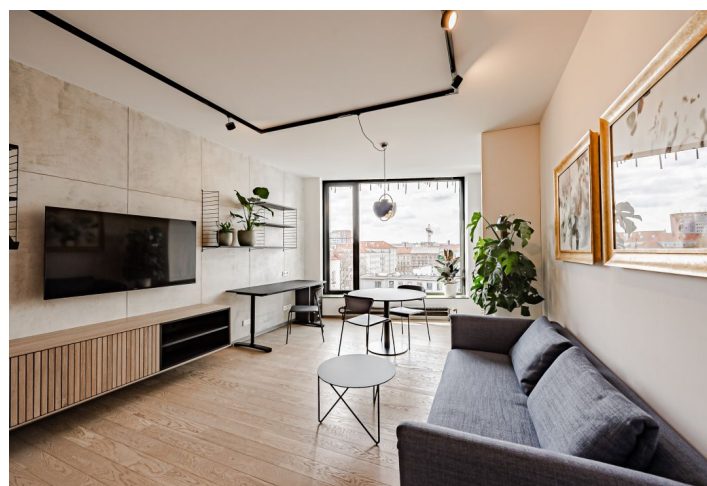




## Apartment Studio (1+1)

50 m², Prague 7, Holešovice, Komunardů

Rented





## Apartment Studio (1+1)

**Rented**

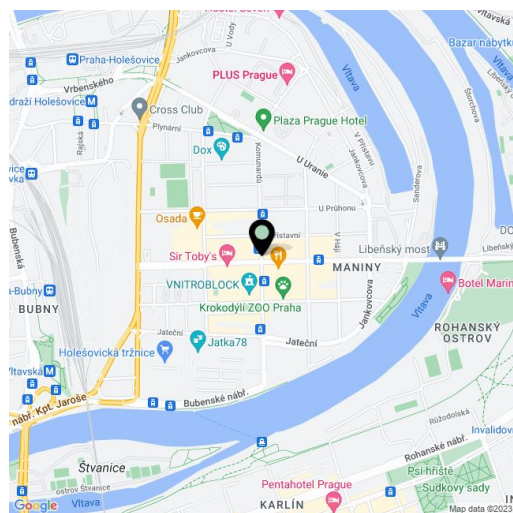
50 m², Prague 7, Holešovice, Komunardů

Total area	50 m²
Parking	Garage parking nearby.
Garage	Yes
Cellar	Yes
PENB	C
Reference number	42437
Available from	Immediately

Design apartment in a brand new iconic building by the renown architect Stanislav Fiala, author of the DRN building. This furnished studio apartment is on the 5th floor of this top-of-the-line apartment building in a dynamic district with trendy cafes, restaurants, bistros and excellent transport accessibility. Previously industrial Holešovice has now grown into a modern district with a slightly bohemian atmosphere. The advantages of living here include its convenient access to the city center by tram and metro (Vltavská and Nádraží Holešovice stations), complete amenities, music clubs, DOX art gallery, La Fabrika and Játka 78 theaters, a multicultural center, and more. A golf driving range is nearby, as well as a popular bike path along the Vltava River.

The interior features a living room / bedroom with a dining area, a bathroom with a walk-in shower and a toilet, and an entrance hall with a fully fitted kitchen, and a built-in wardrobe.

**Air-conditioning, hardwood floors, tiles, security entry door, washing machine, dryer, dishwasher, induction cooktop, microwave oven, TV, cellar, electronic entry system, bike / pram storage, lift.** A **garage parking** space nearby is available at CZK 2,000/month. Monthly deposit for service charges, water and heating: CZK 3,000. Electricity is billed separately (transfer to the tenant).



\* Area of the unit according to the Civil Code. The area consists of the sum total area of the entire unit bounded by perimeter walls.